

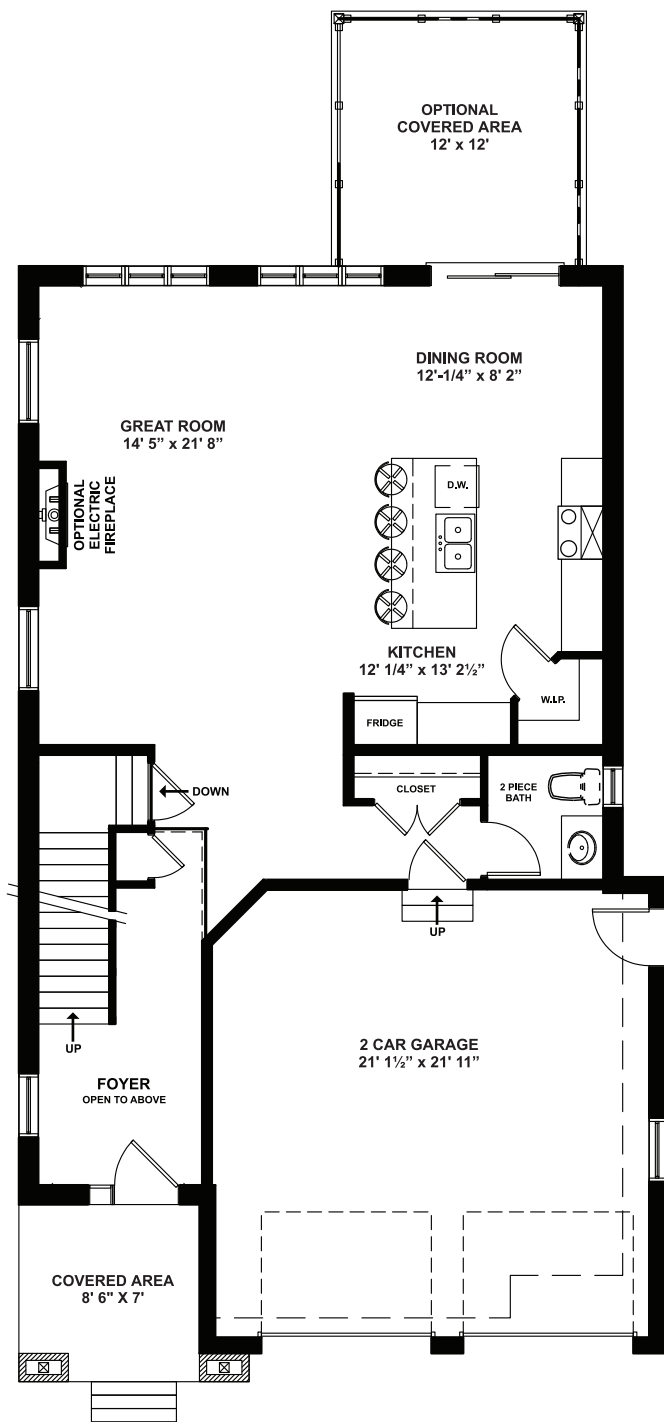


COLLIERHOMES.CA
(519) 633-9642

the BANNERMAN

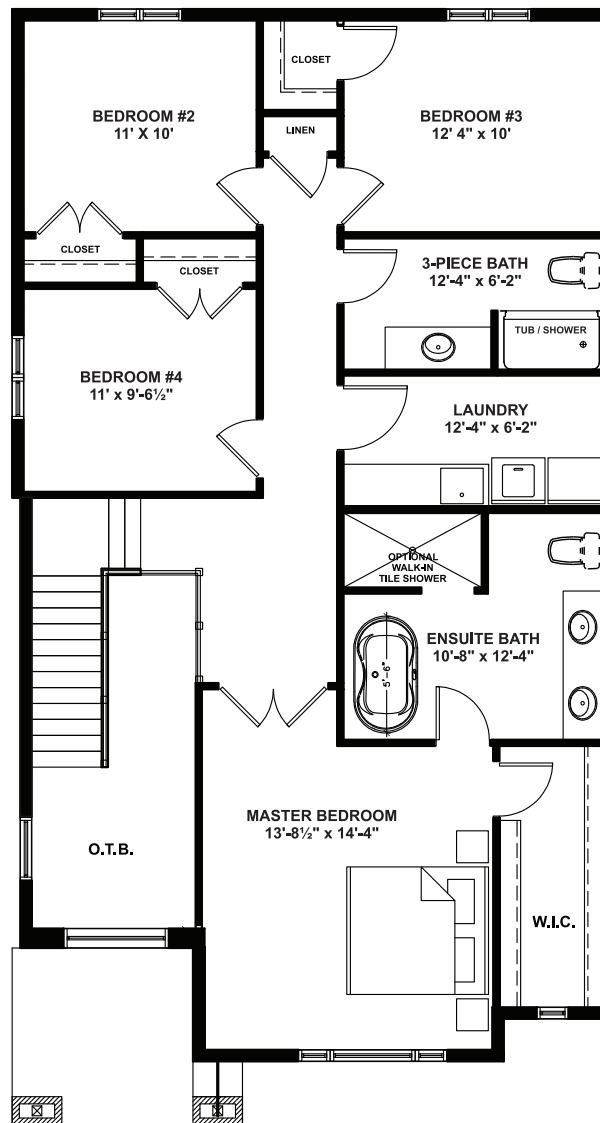
Approximately 2149 sq ft, this two story home contains 4 bedrooms upstairs including a spacious primary bedroom with ensuite and walk-in closet, open concept main floor with kitchen, dining room and a two car garage.

Elevations are artist renderings and may show optional items.



MAIN FLOOR LAYOUT

Approximately 972 SQ. FT.
(+/-) 30'-5" Wide x (+/-) 52'-6" Deep

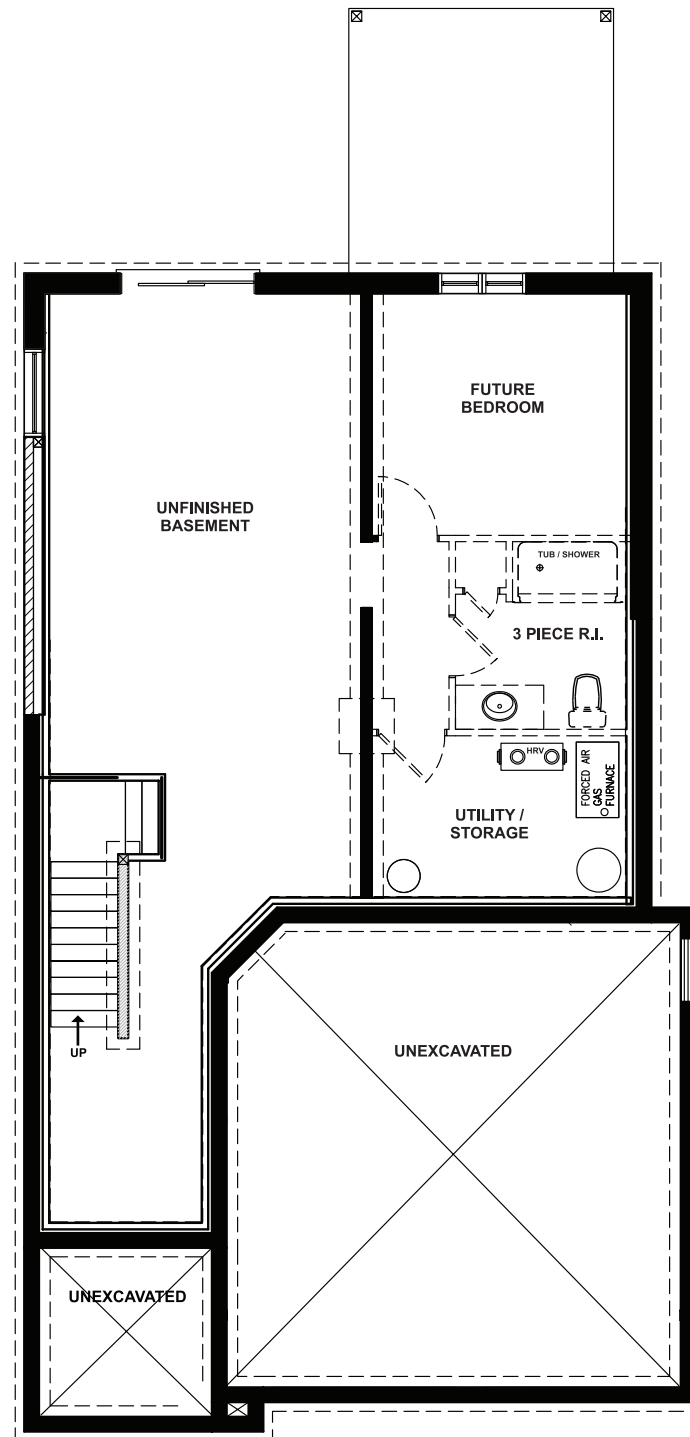


UPPER FLOOR LAYOUT

Approximately 1177 SQ. FT.



Floor plans are artists renderings
and may show optional items.



FOUNDATION LAYOUT (unfinished)



Floor plans are artists renderings and may show optional items.