

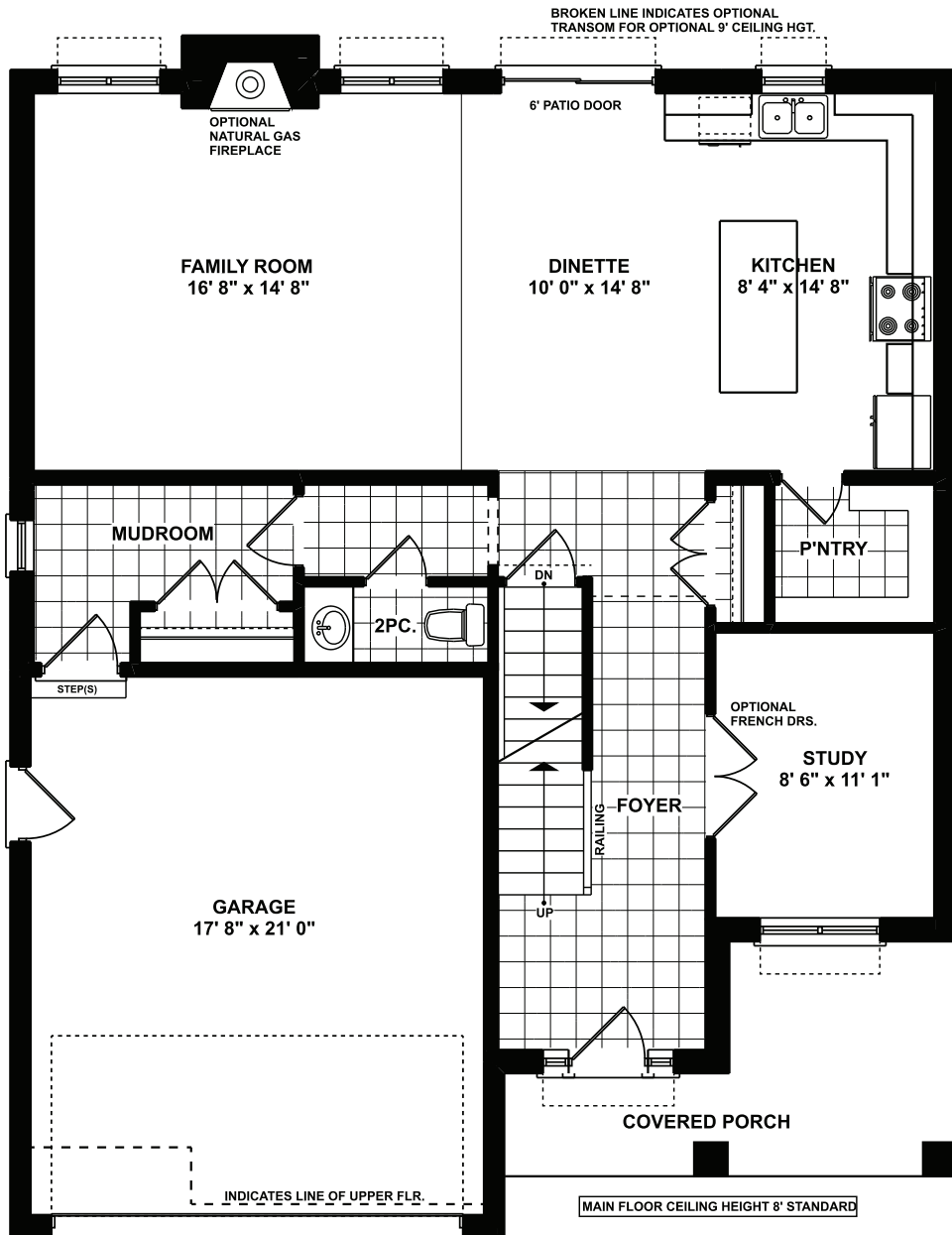


COLLIERHOMES.CA  
(519) 633-9642

## *the* GANDER B

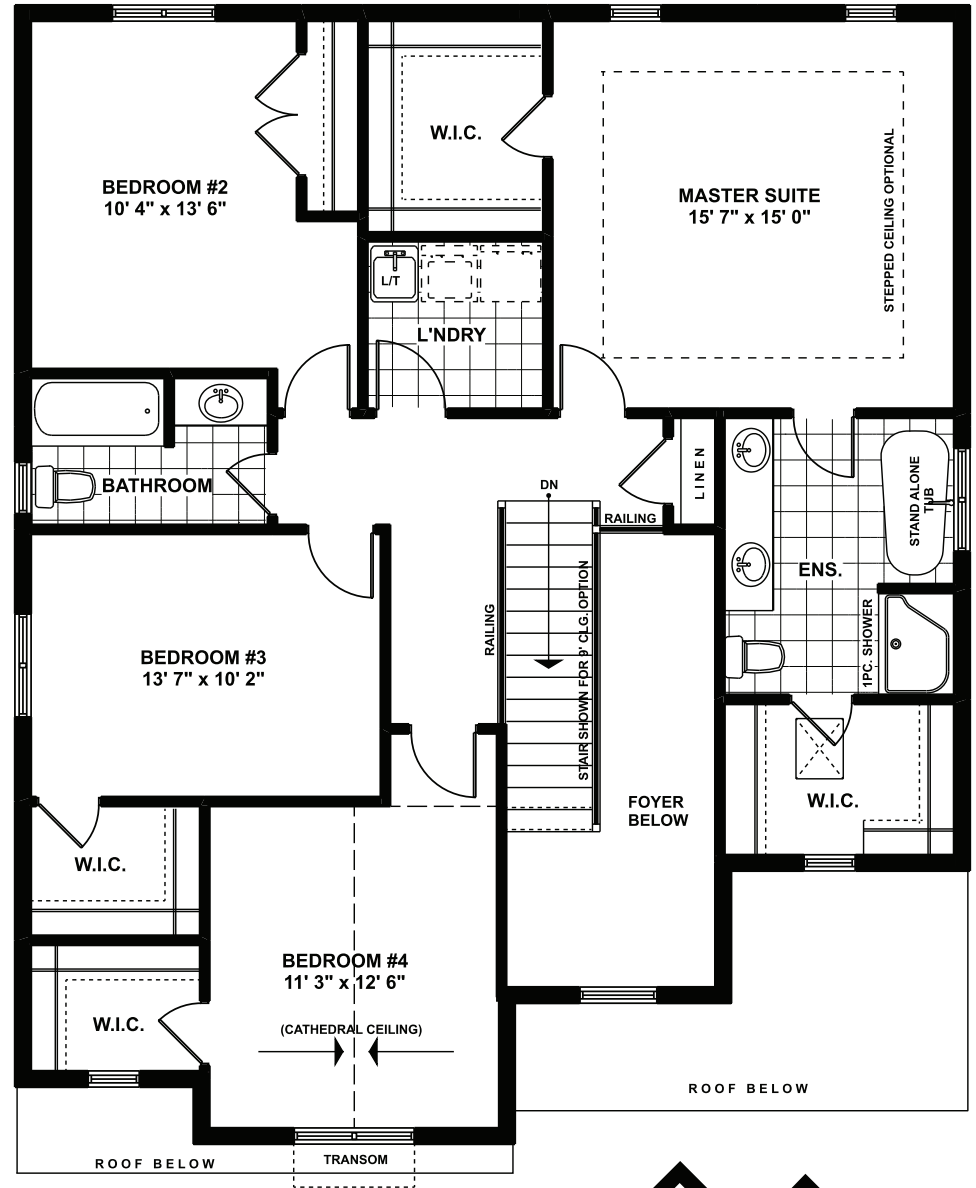
Approximately 2559 sq. ft two storey with a two car garage. 1st floor has a 2-piece bathroom, Open concept kitchen and family room leading into a dining room. 2nd floor consists of a laundry room, 4 large bedrooms and a 4-piece bathroom. Primary bedroom has a 4-piece ensuite with a walk in closet. Optional fireplace/9' ceilings.

Elevations are artist renderings and may show optional items.



## MAIN FLOOR PLAN

Approximately 1100 SQ. FT.  
 (+/-) 36' 10" WIDE (+/-) 45' 3" DEEP

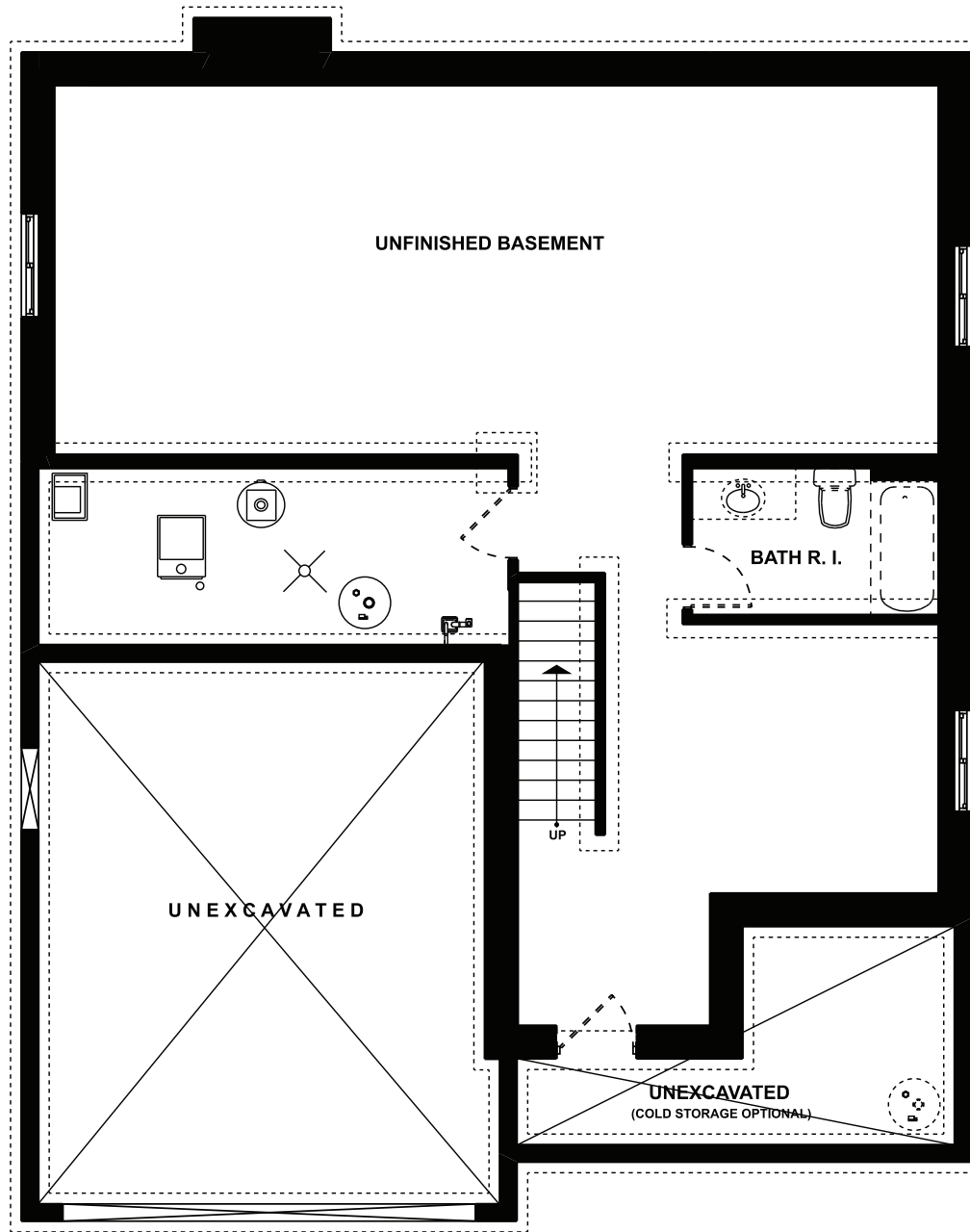


## UPPER FLOOR PLAN

Approximately 1468 SQ. FT.



Floor plans are artists renderings and may show optional items.



**FOUNDATION LAYOUT (unfinished)**



Floor plans are artists renderings and may show optional items.