

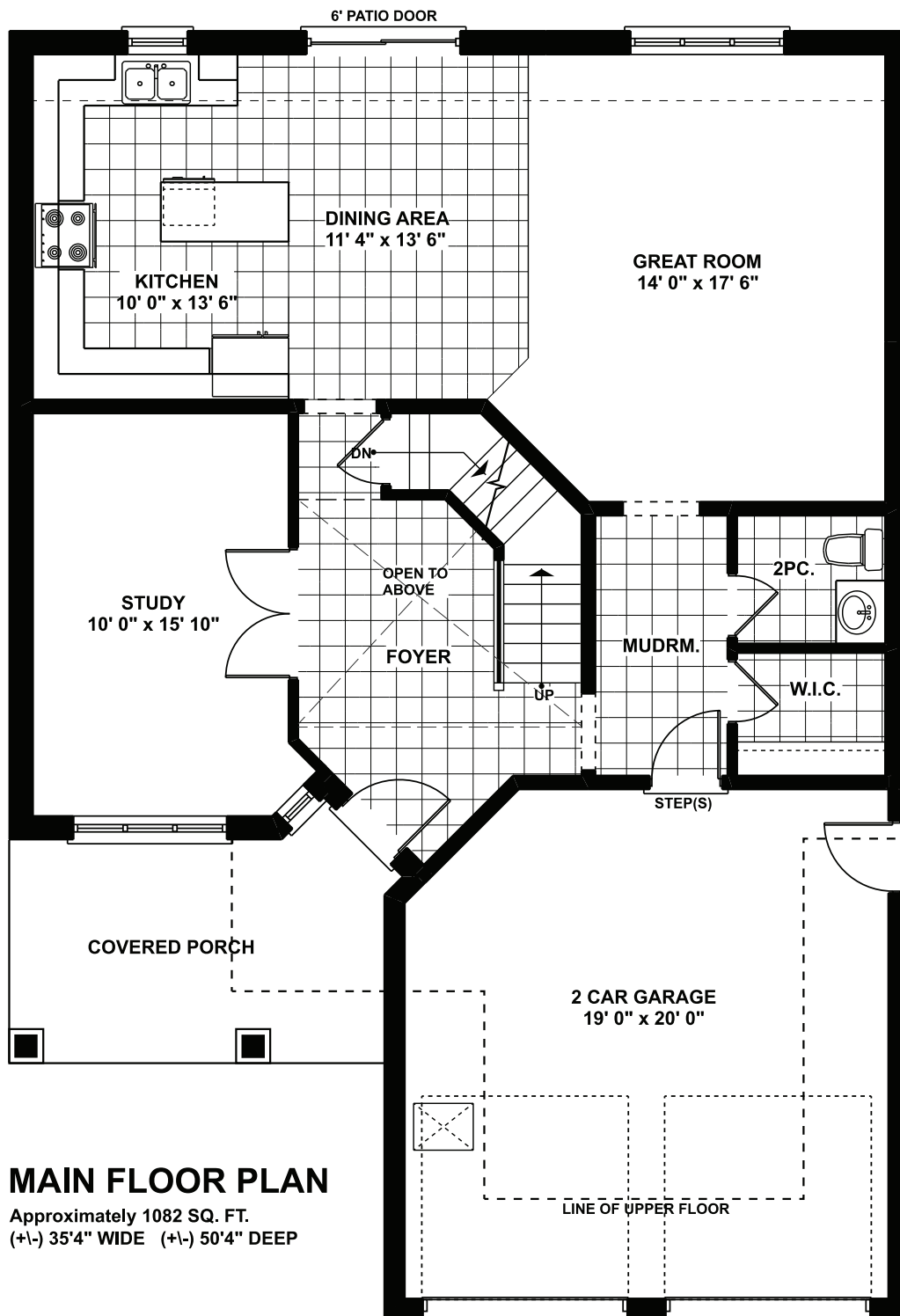


COLLIERHOMES.CA
(519) 633-9642

the HERON

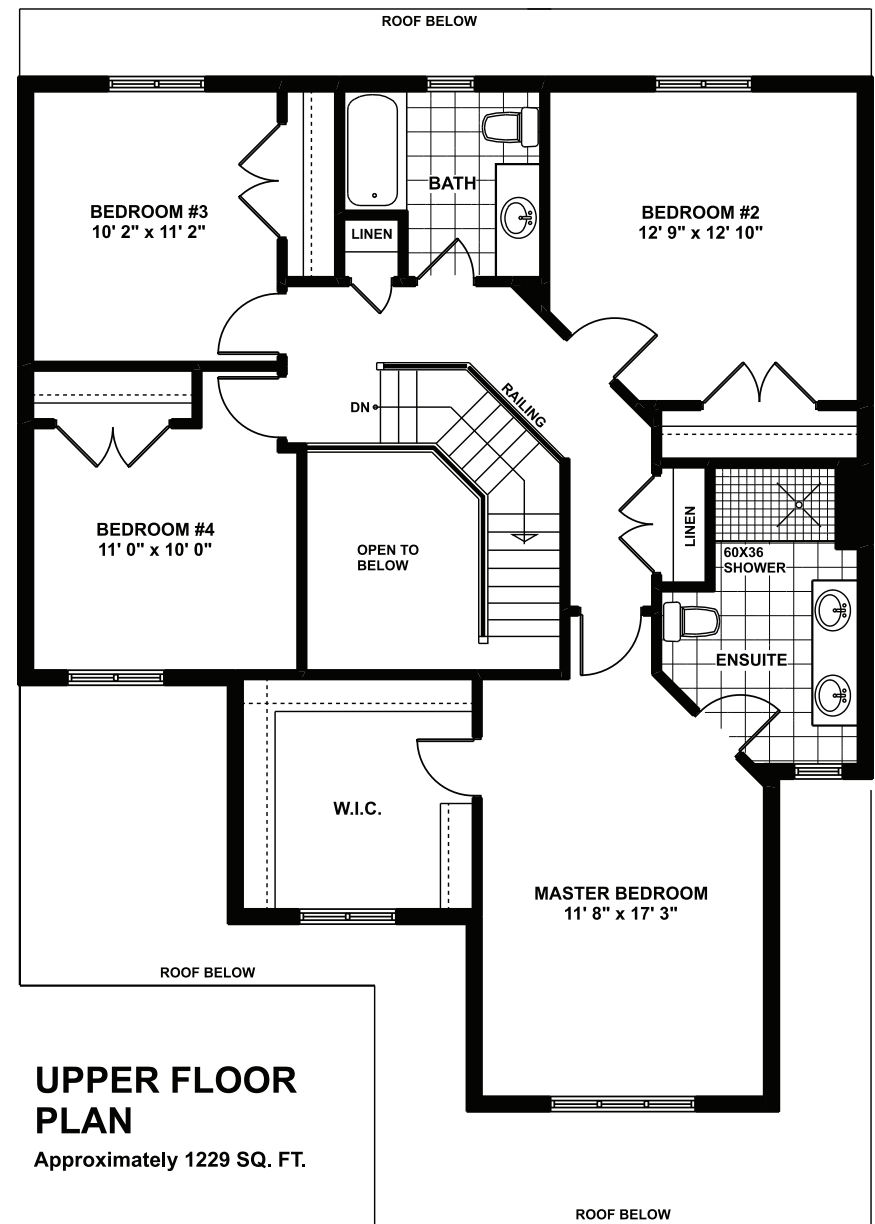
Approximately 2300 sq. ft. 2 storey with 2 car garage. 1st floor has a spacious foyer, 2-piece bathroom, dining room/study, and an open kitchen/dinette leading into the great room. From the open staircase, the 2nd floor has 4 bedrooms and a 4-piece bathroom. Primary bedroom has a walk-in closet and a 4-piece ensuite.

Elevations are artist renderings and may show optional items.



MAIN FLOOR PLAN

Approximately 1082 SQ. FT.
(+/-) 35'4" WIDE (+/-) 50'4" DEEP



UPPER FLOOR PLAN

Approximately 1229 SQ. FT.

Floor plans are artists renderings
and may show optional items.

