

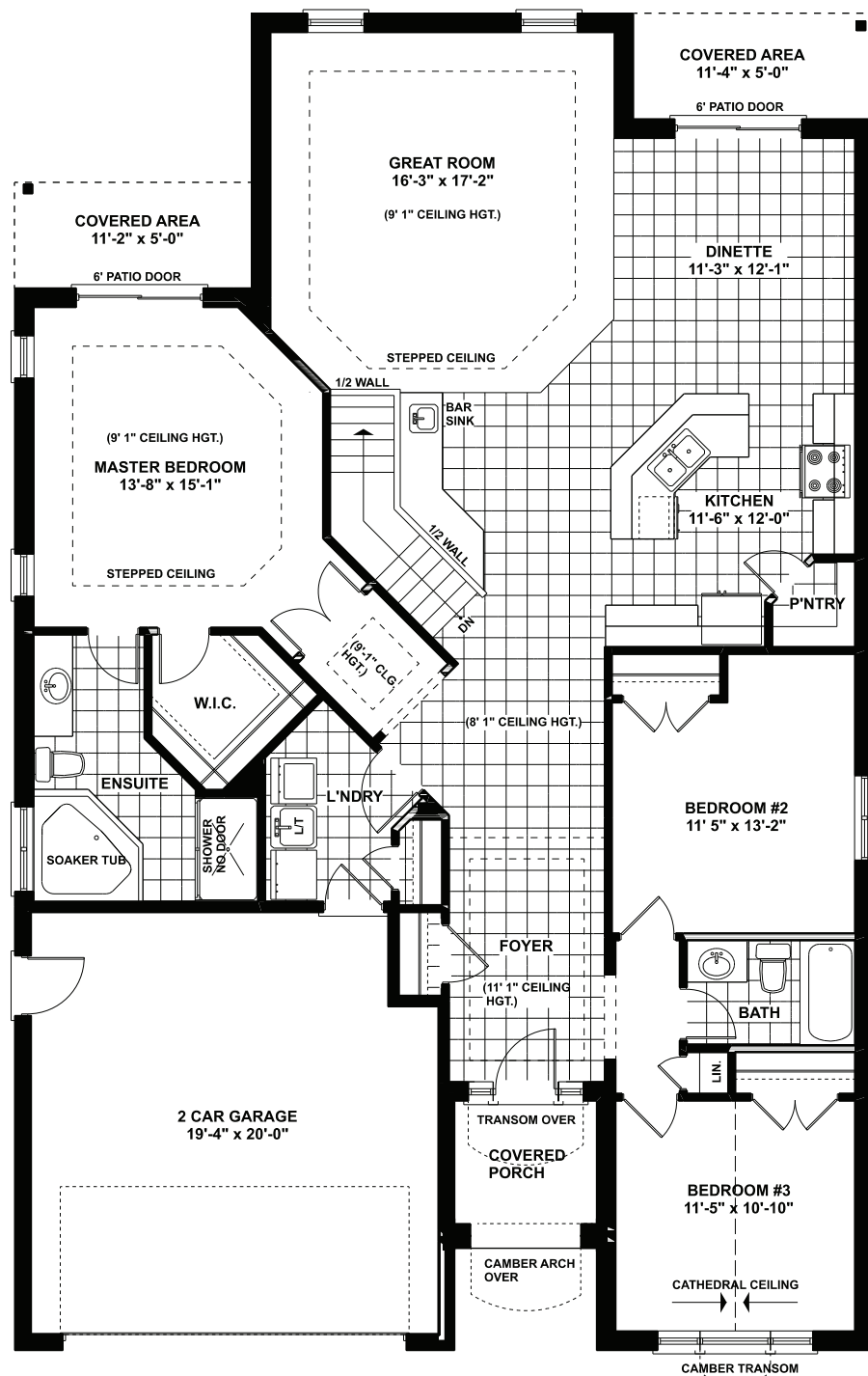


COLLIERHOMES.CA
(519) 633-9642

the LEWISPORTE B

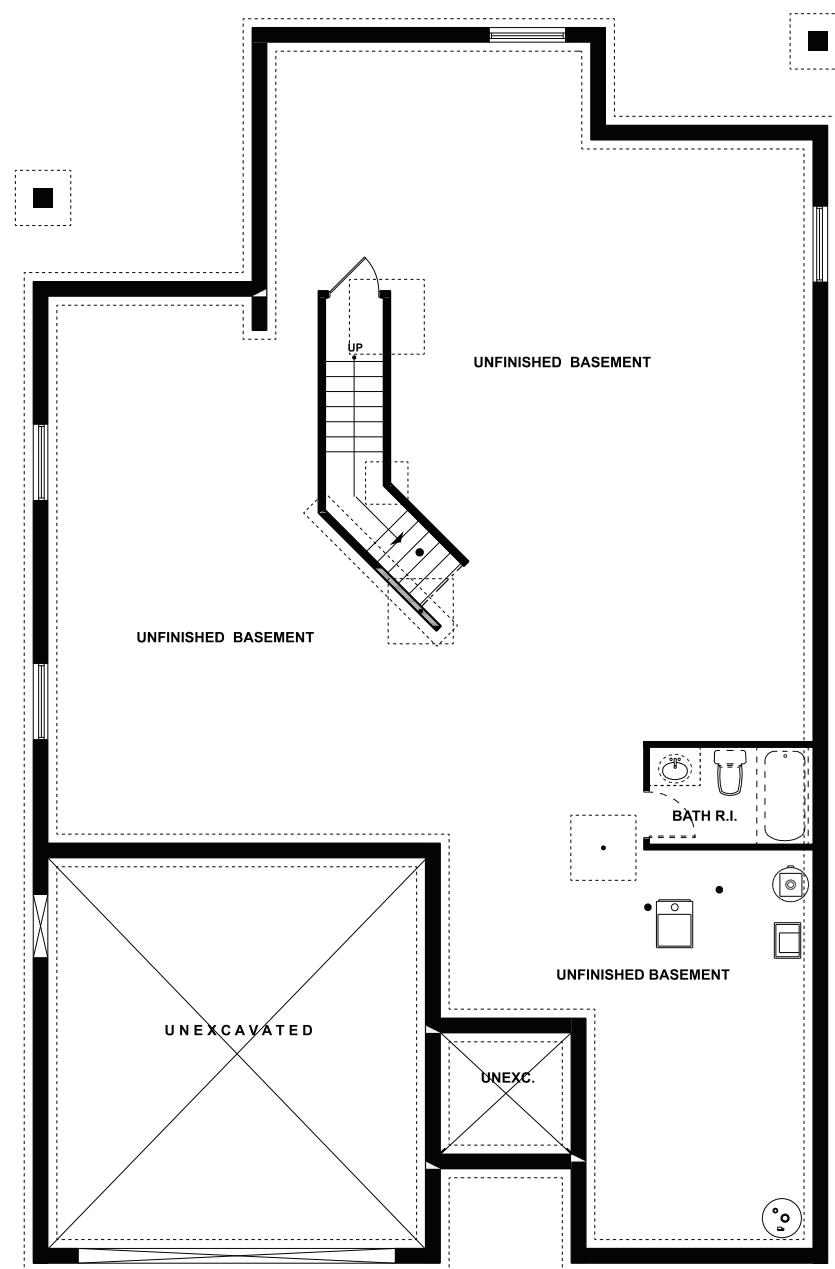
Approximately 1900 sq. ft bungalow with a two car garage. Features main floor laundry with an open concept kitchen / dining and great room. Primary bedroom with a spacious ensuite as well as two additional bedrooms accompanied by a four piece bathroom.

Elevations are artist renderings and may show optional items.



MAIN FLOOR PLAN

Approximately 1900 SQ. FT.
(+/-) 40' 8" WIDE (+/-) 63' 3" DEEP



FOUNDATION LAYOUT

UNFINISHED



Floor plans are artists renderings and may show optional items.