

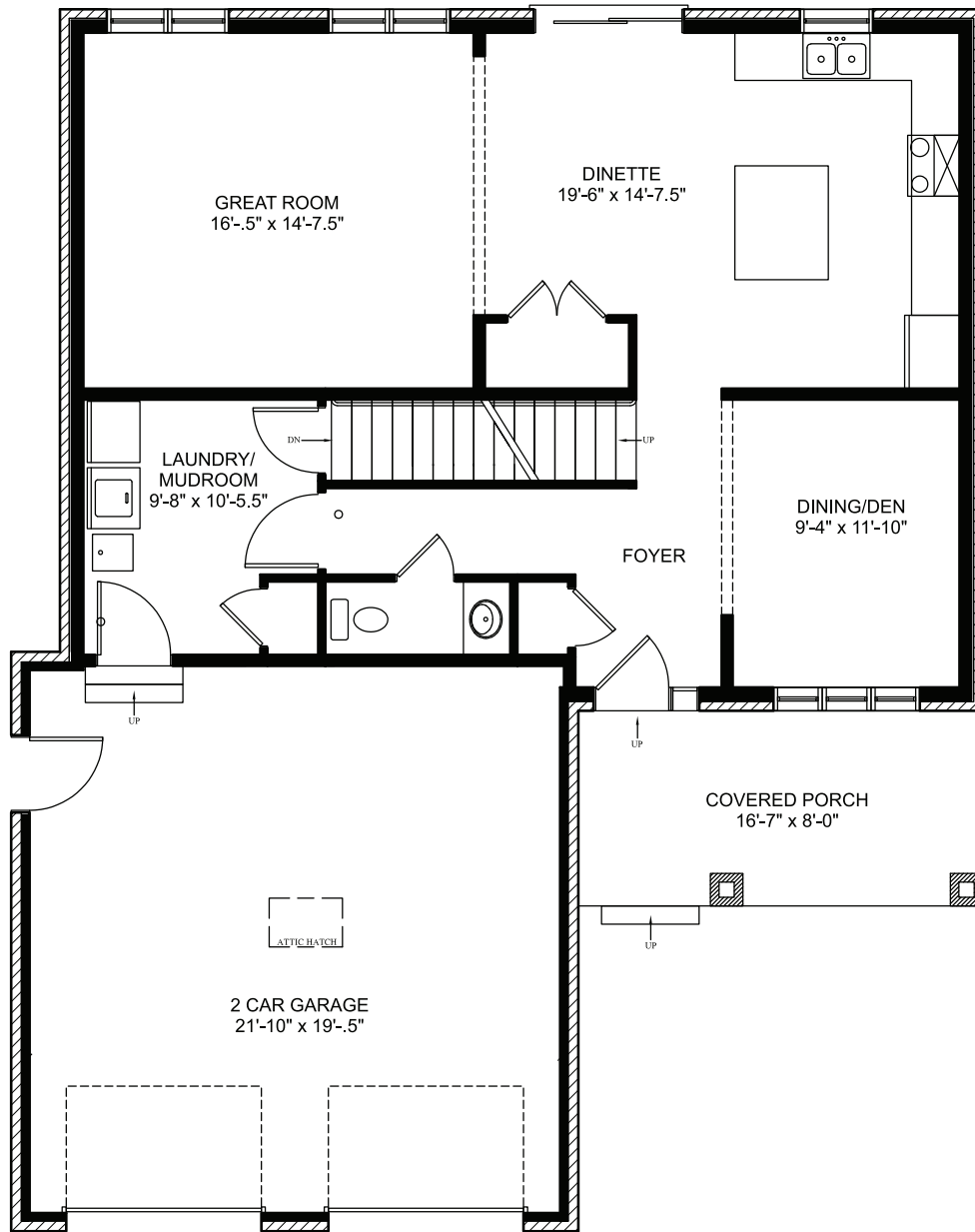


COLLIERHOMES.CA  
(519) 633-9642

## *the* NEWCASTLE

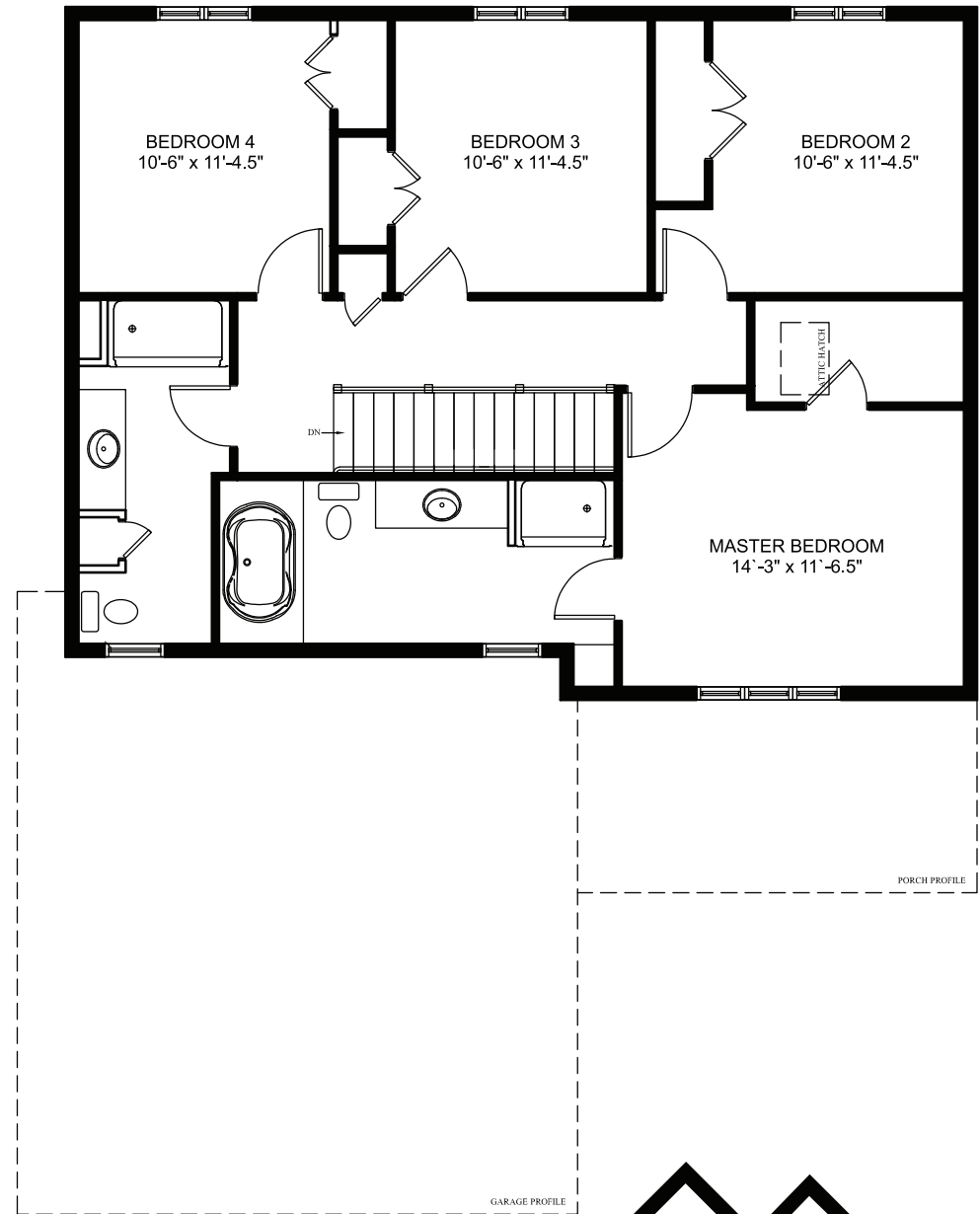
Approximately 2062 sq ft 2-storey home with main floor laundry, 2-piece bathroom, open concept great room and kitchen/dinette. 2nd floor has 4 bedrooms with a 4-piece bathroom. Primary bedroom has walk-in closet and ensuite with a 5' shower and Jacuzzi tub.

Elevations are artist renderings and may show optional items.



## MAIN FLOOR PLAN

Approximately 1050 sq.ft.  
 (+/-) 37' 10" WIDE (+/-) 46' 0" DEEP

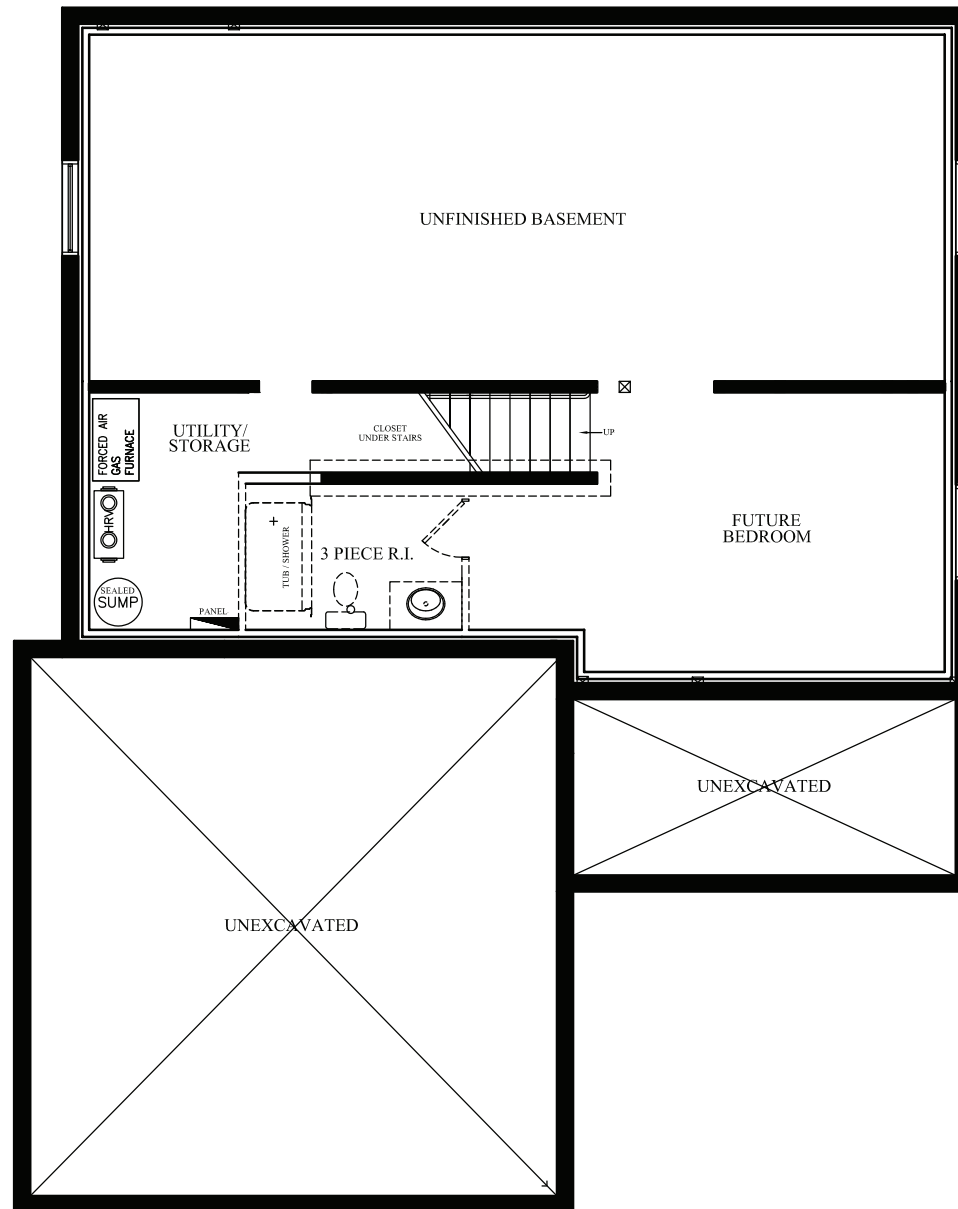


## UPPER FLOOR PLAN

Approximately 1012 sq.ft.



Floor plans are artists renderings  
 and may show optional items.



**FOUNDATION LAYOUT**



Floor plans are artists renderings  
and may show optional items.