

THE CODROY



2-STORY

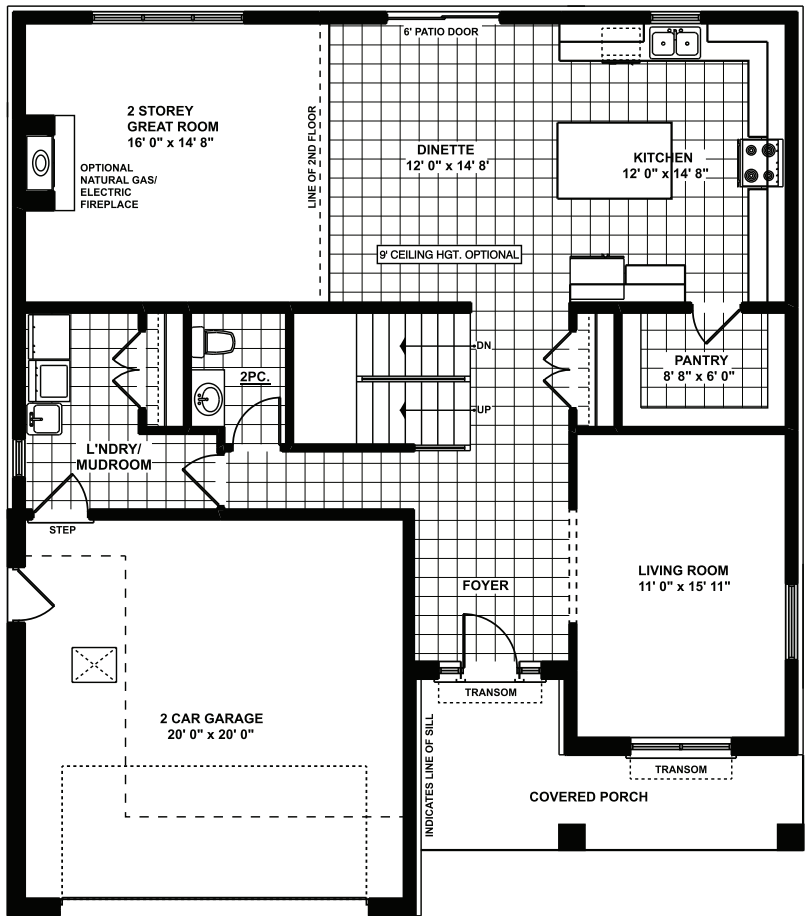


Approx. 2,905 sq.ft.

3 Bed 3 Bath

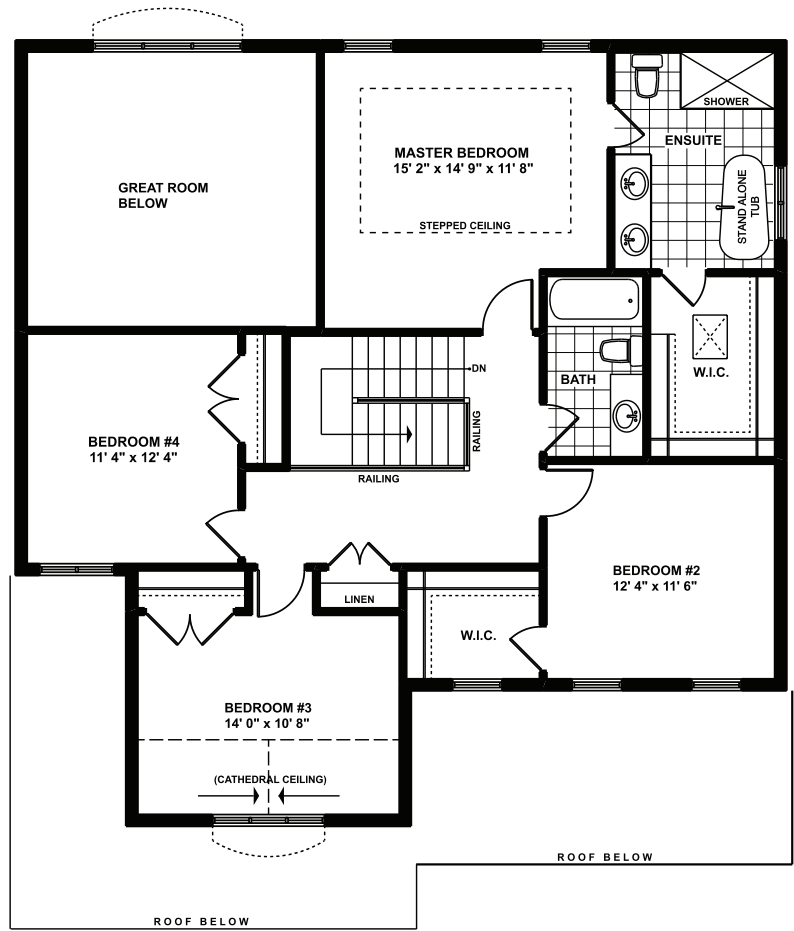
Approximately 2,905 sq. ft. two storey has a main floor two-piece bathroom, laundry and mud room. Includes open concept kitchen/dinette, great room, and a living room. The second floor accommodates three bedrooms including a four-piece bathroom. Primary suite has a spacious four-piece ensuite and a walk-in closet. Optional fireplace / 9' ceilings.

THE CODROY FLOOR PLANS



MAIN FLOOR LAYOUT
 Approximately 1354 SQ. FT.
 (+/-) 41' 6" WIDE (+/-) 49' 5" DEEP

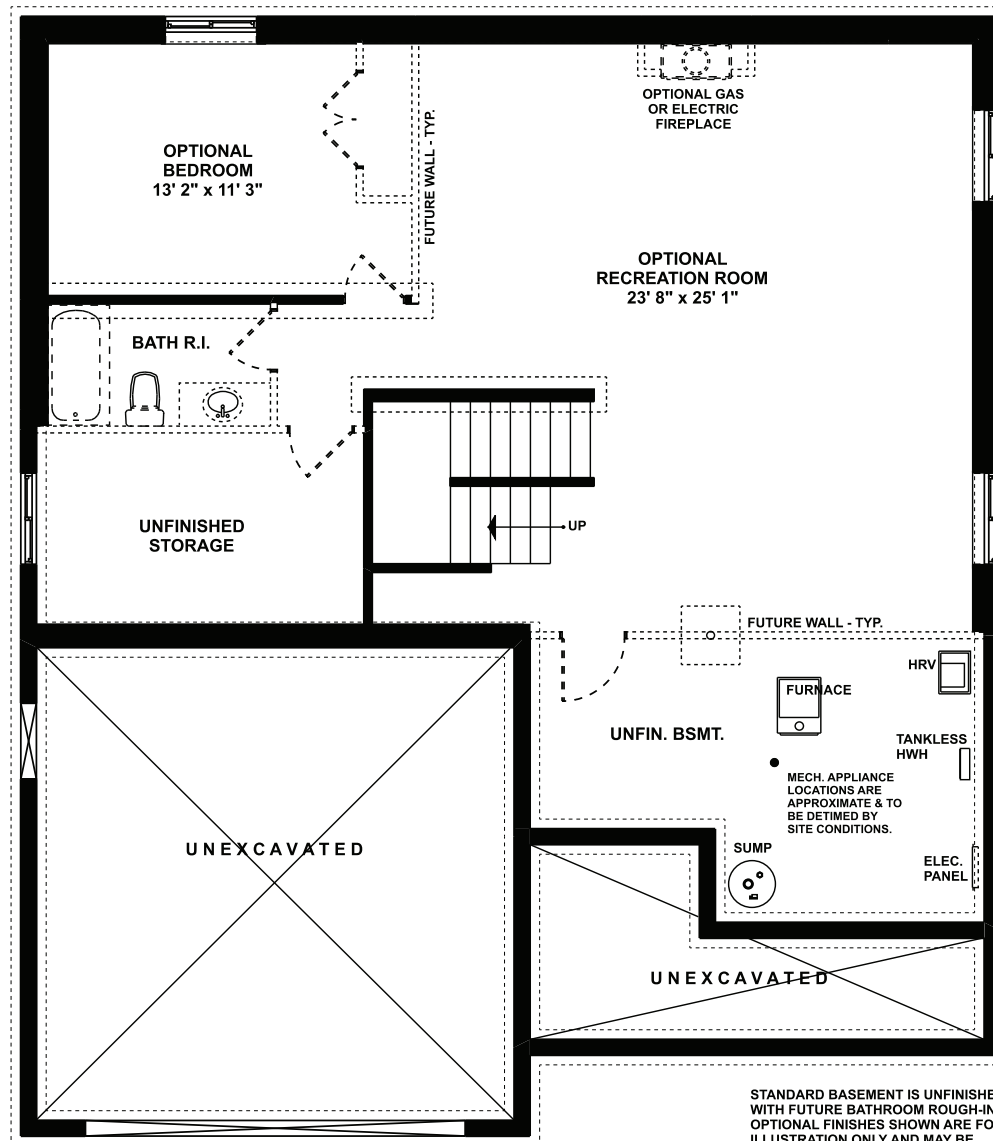
artist concept only and may show optional features not included in base price. See sales representative for further information. E.S.O.E.



UPPER FLOOR LAYOUT
 Approximately 1519 SQ. FT.

THE CODROY FLOORPLANS

Plans and specifications are subject to change without notice. Actual usable floor space may vary from stated floor area. Illustrations are artist concept only and may show optional features not included in base price. See sales representative for further information. E.&O.E.



FOUNDATION LAYOUT

Approximately 927 SQ. FT.
Optional Finished Area

STANDARD BASEMENT IS UNFINISHED WITH FUTURE BATHROOM ROUGH-IN. OPTIONAL FINISHES SHOWN ARE FOR ILLUSTRATION ONLY AND MAY BE INCLUDED AT ADDITIONAL CHARGES.

