

THE GAMBO

BUNGALOW

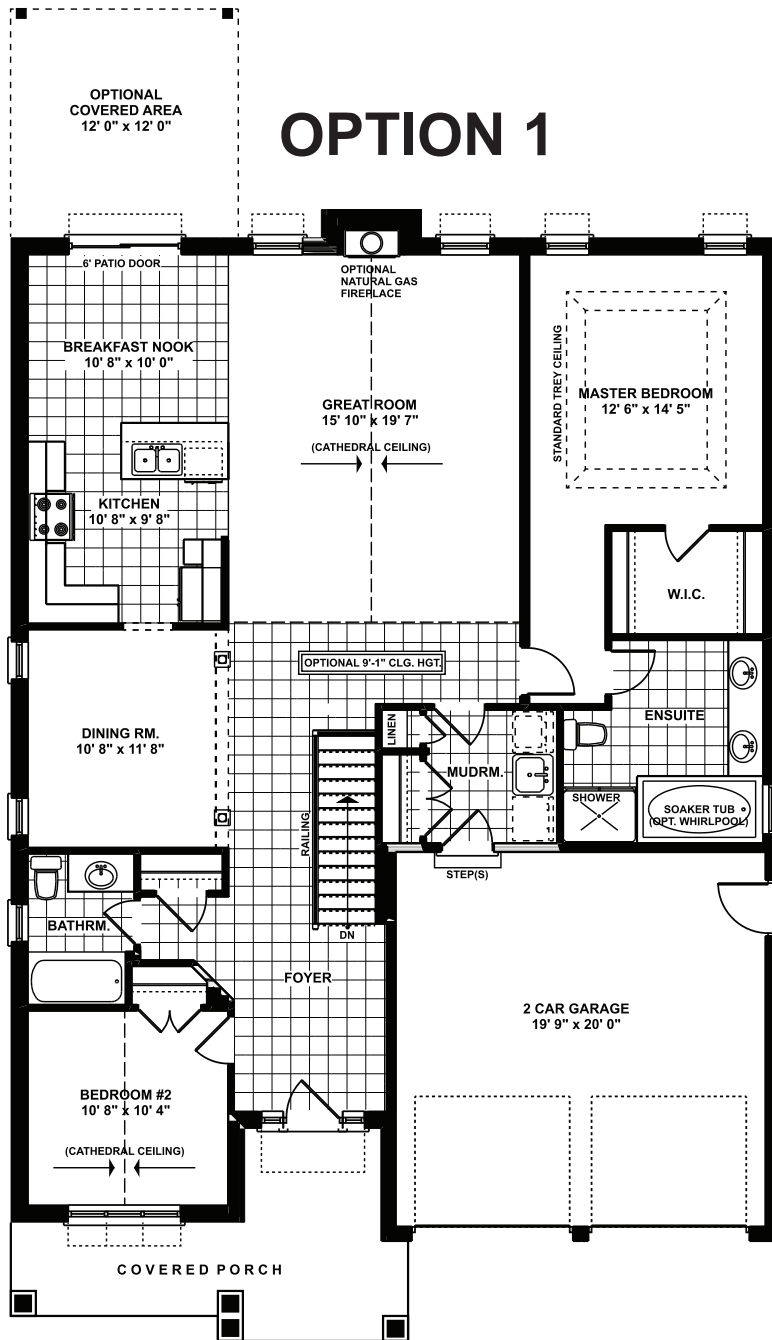


Approx. 1,705 sq.ft.

2 Bed 2 Bath

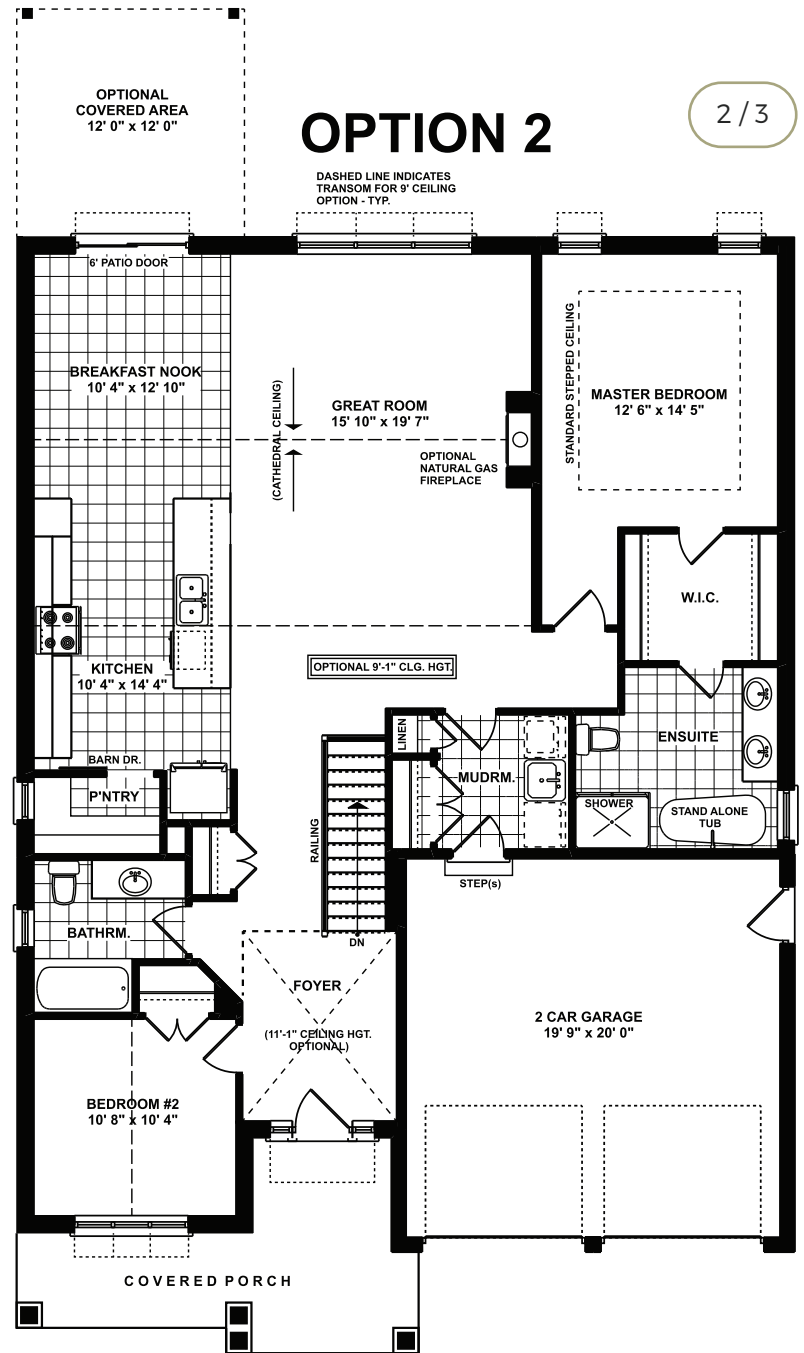
Approximately 1,705 sq.ft. bungalow with garage. Open concept kitchen, dining room, and great room. Two bedrooms with main floor laundry. Four-piece main bathroom with a walk-in closet and ensuite bath in the primary bedroom.

THE GAMBO FLOOR PLANS



MAIN FLOOR PLAN

Approximately 1705 SQ. FT.
(+/-) 41' 0" WIDE (+/-) 58' 10" DEEP



MAIN FLOOR LAYOUT

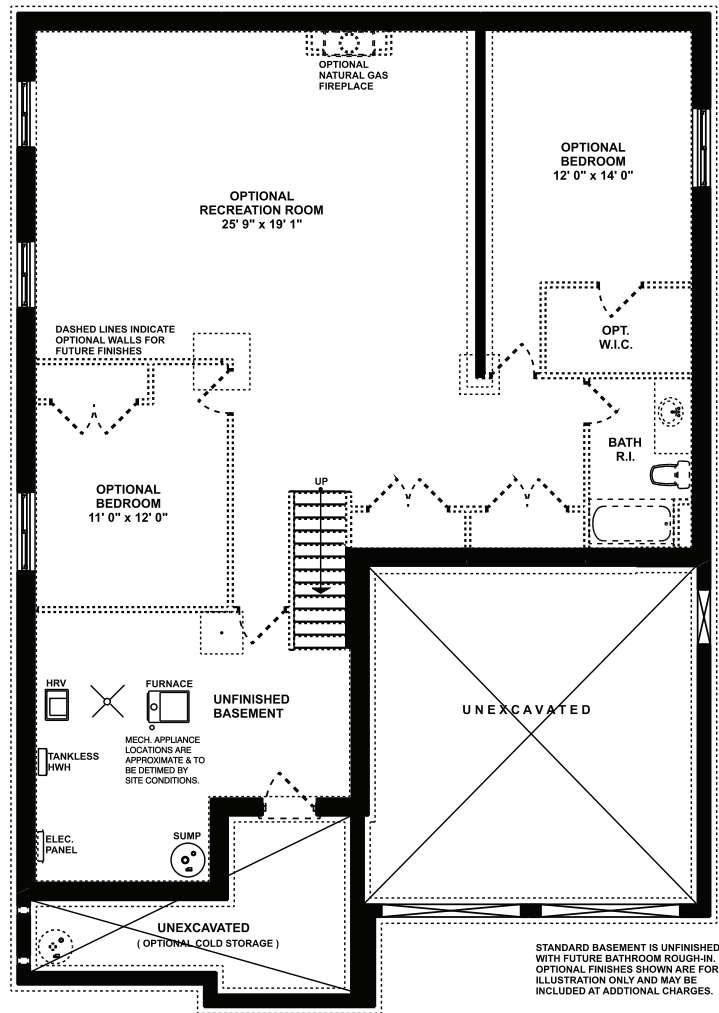
Approximately 1705 SQ. FT.
(+/-) 41' 0" WIDE (+/-) 58' 10" DEEP

Plans and specifications are subject to change without notice. Actual usable floor space may vary from stated floor area. Illustrations are artist concept only and may show optional features not included in base price. See sales representative for further information. E & O. E.

THE GAMBO FLOORPLANS



Plans and specifications are subject to change without notice. Actual usable floor space may vary from finished floor area. Illustrations are artist concept only and may show optional features not included in base price. See sales representative for further information. E.S. O.E.



FOUNDATION LAYOUT

Approximately 1278 SQ. FT.
OPTIONAL FINISHED AREA



collierhomes.ca // (519) 633-9642