

THE GANDER B



2-STOREY

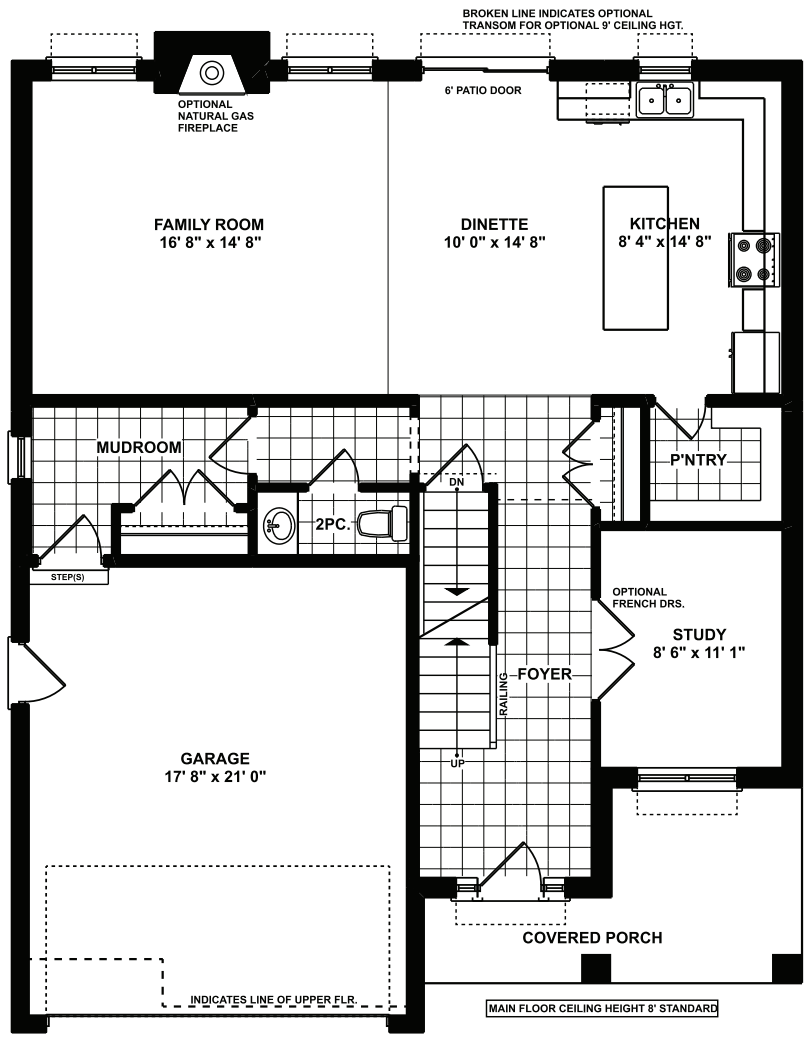


Approx. 2,559 sq.ft.

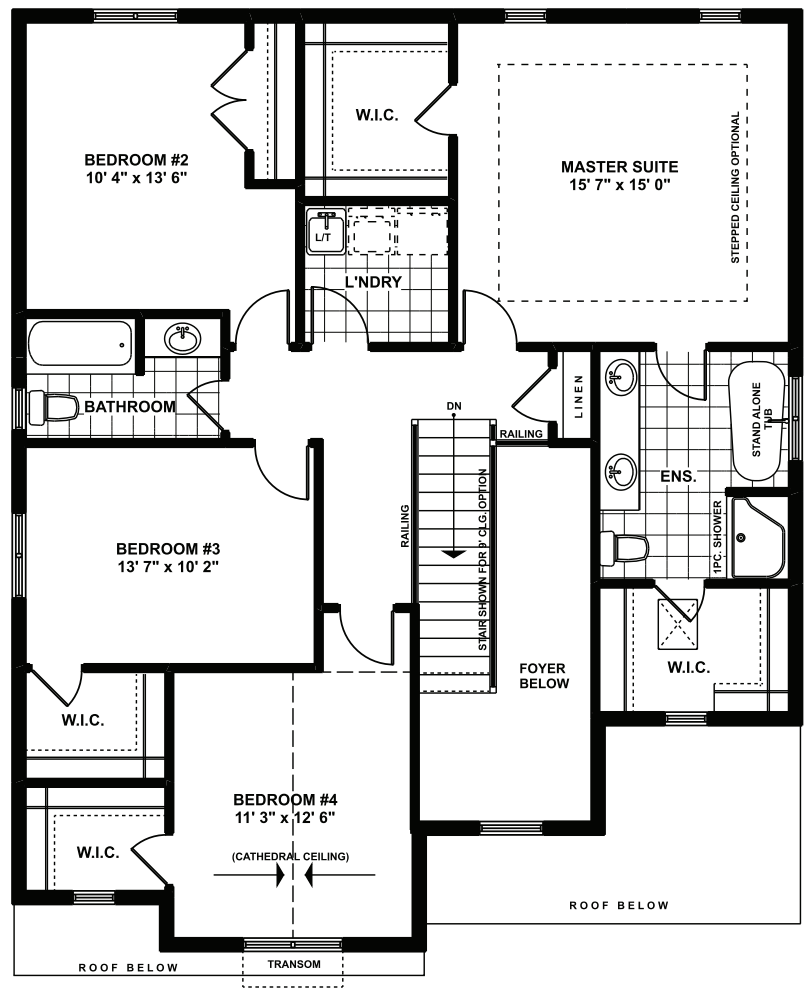
4 Bed 2.5 Bath

Approximately 2,559 sq. ft. two storey with a two-car garage. First floor has a two-piece bathroom, open concept kitchen and family room leading into a dining room. Second floor consists of a laundry room, four large bedrooms and four-piece bathroom. Primary bedroom has a four-piece ensuite with a walk-in closet. Optional: fireplace / 9' ceilings.

THE GANDER B FLOOR PLANS



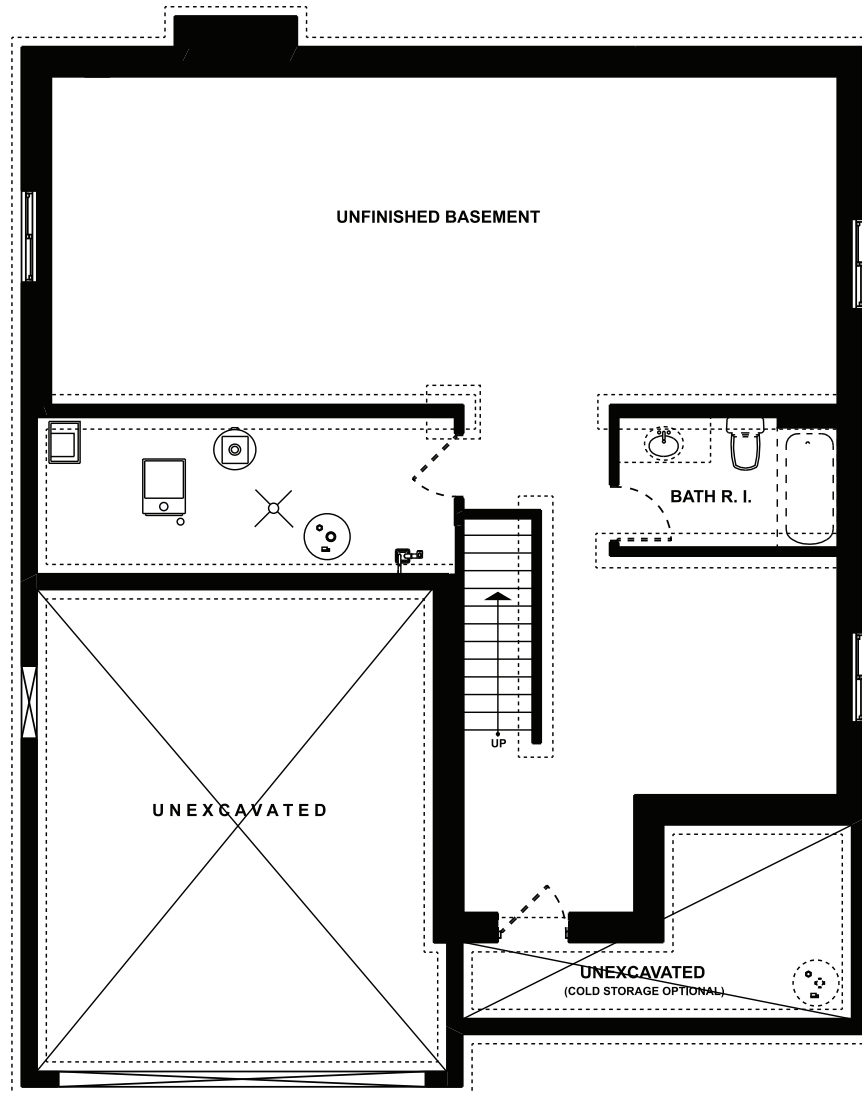
MAIN FLOOR PLAN
 Approximately 1100 SQ. FT.
 (+/-) 36' 10" WIDE (+/-) 45' 3" DEEP



UPPER FLOOR PLAN
 Approximately 1468 SQ. FT.

Elevations are artist renderings and may show optional items. Revised April 2026

THE GANDER B FLOOR PLANS



FOUNDATION LAYOUT (unfinished)