

THE HERON



2-STOREY

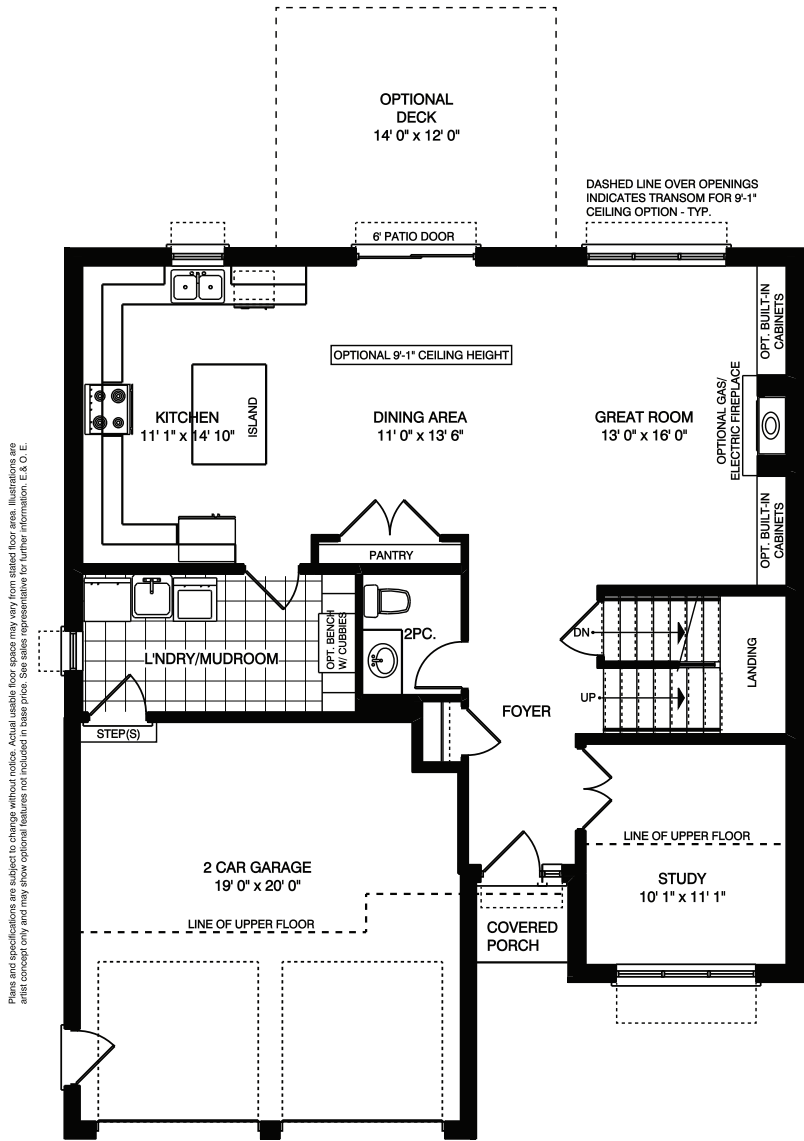


Approx. 2,300 sq.ft.

4 Bed 2.5 Bath

Approximately 2,300 sq. ft. two storey with a two-car garage. First floor has a spacious foyer, two-piece bathroom, dining room/study, and an open kitchen/dinette leading into the great room. The second floor has four bedrooms and a four-piece bathroom. Primary bedroom has a walk-in closet and a four-piece ensuite.

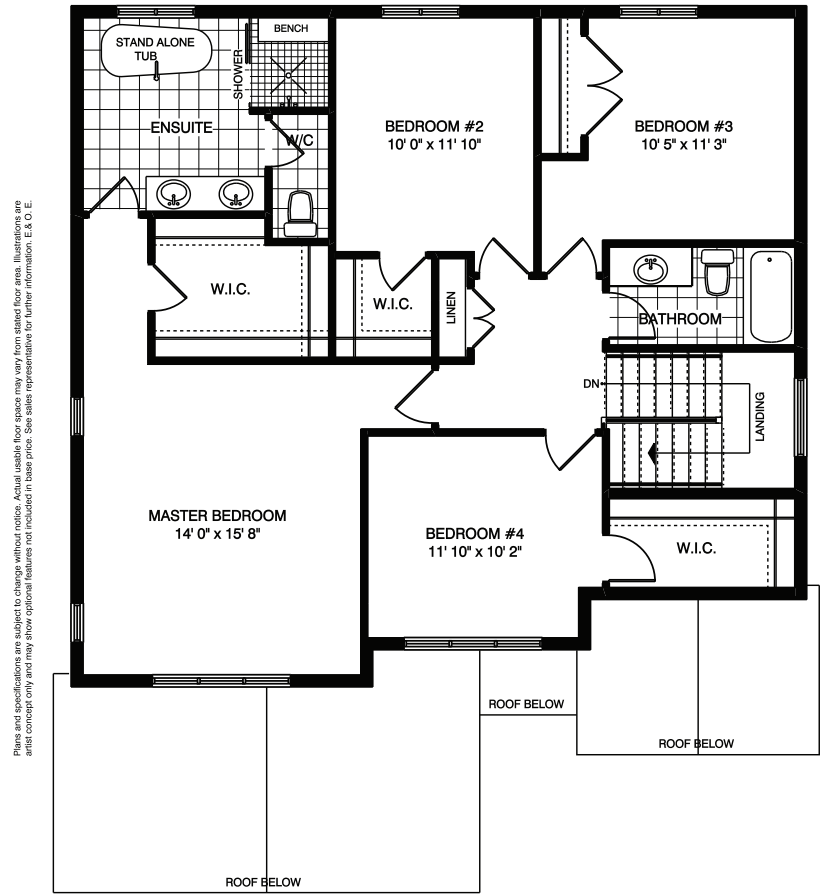
THE HERON FLOORPLANS



MAIN FLOOR LAYOUT

Approximately 1080 SQ. FT.
37' 0" (+/-) WIDE 44' 7" (+/-) DEEP

Plans and specifications are subject to change without notice. Actual usable floor space may vary from stated floor area. Illustrations are artist concept only and may show optional features not included in base price. See sales representative for further information. E & O. E.

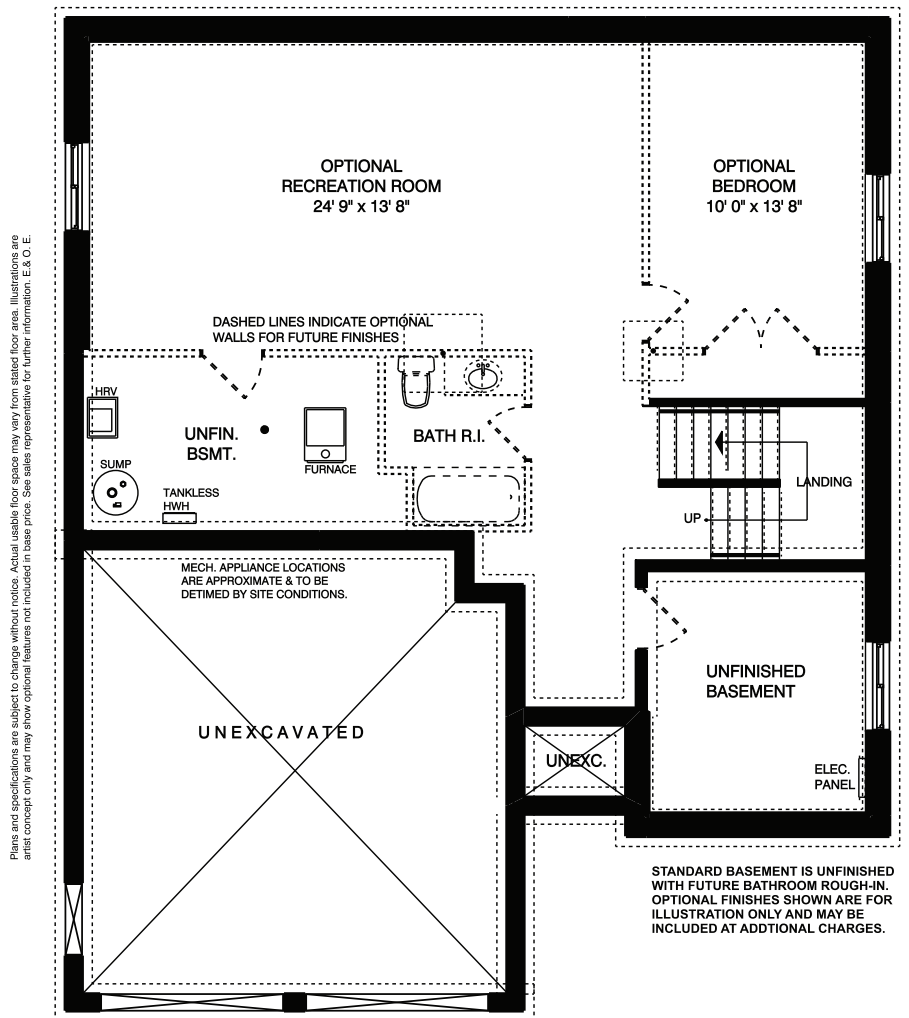


UPPER FLOOR LAYOUT

Approximately 1215 SQ. FT.

Plans and specifications are subject to change without notice. Actual usable floor space may vary from stated floor area. Illustrations are artist concept only and may show optional features not included in base price. See sales representative for further information. E & O. E.

THE HERON FLOORPLANS



FOUNDATION LAYOUT
Approximately 704 SQ. FT.
Optional Finished Area