

THE HERON



2-STOREY

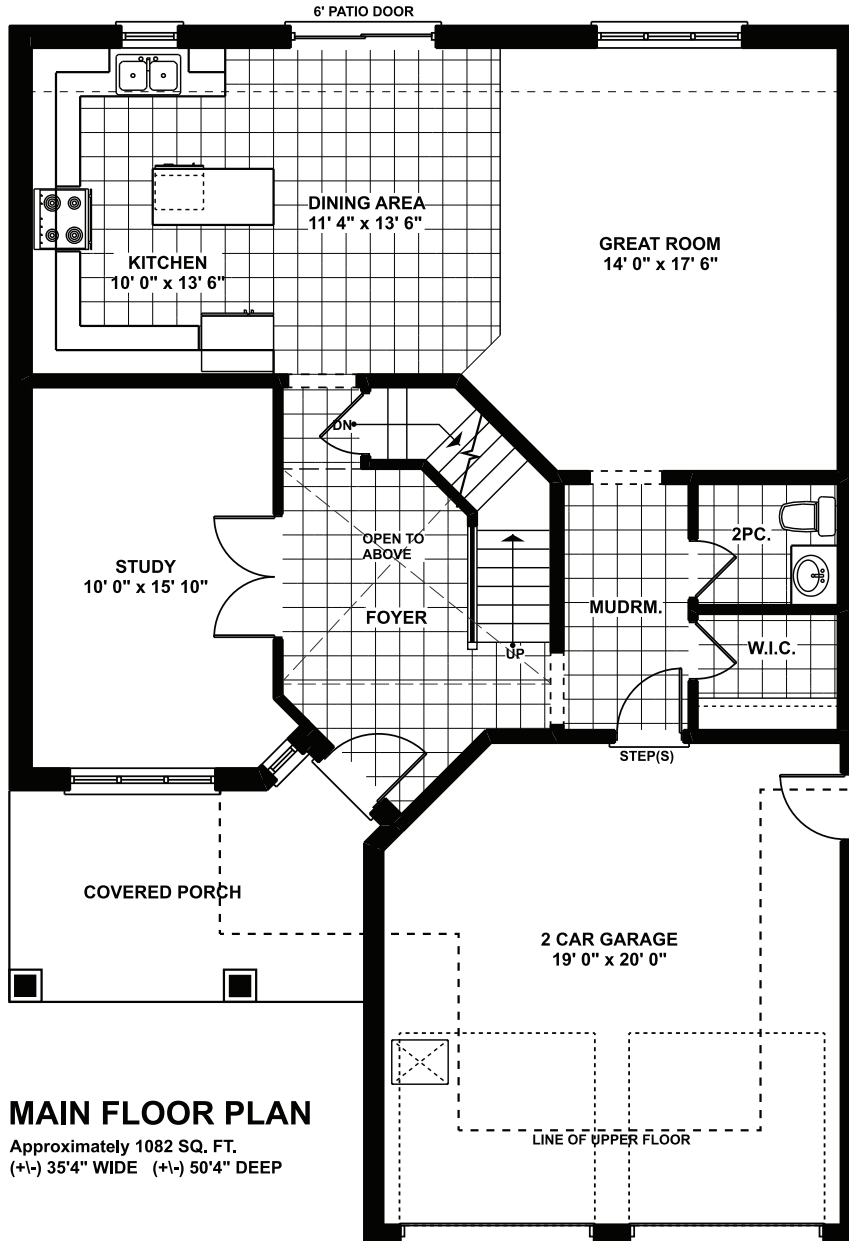


Approx. 2,300 sq.ft.

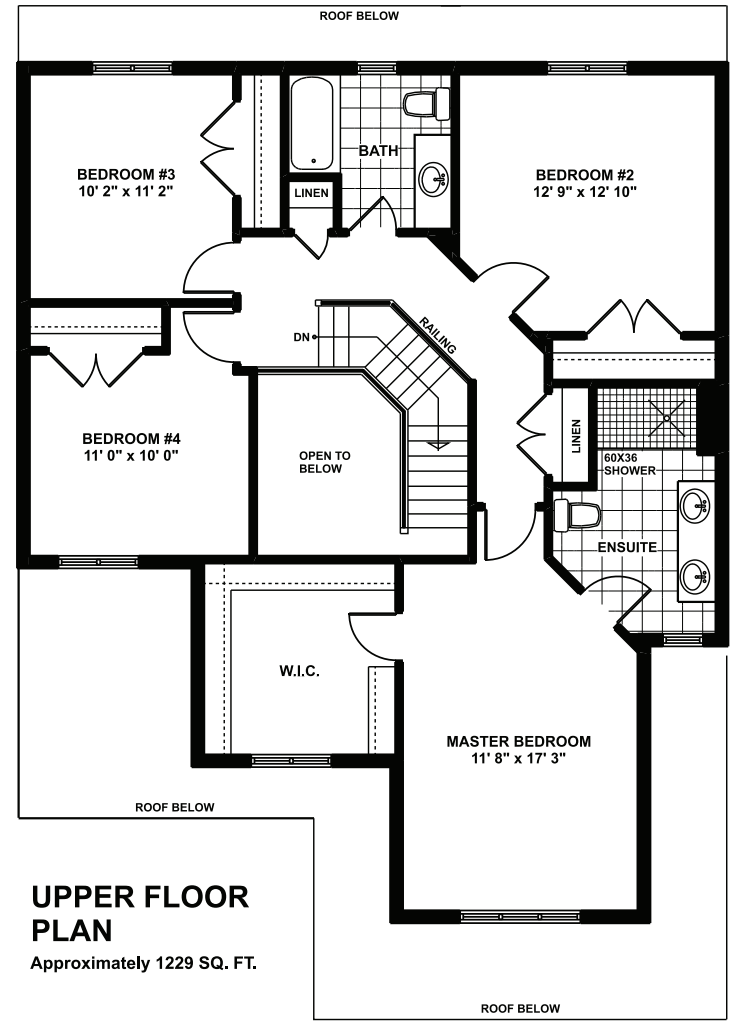
 4 Bed  2.5 Bath

Approximately 2,300 sq. ft. two storey with a two-car garage. First floor has a spacious foyer, two-piece bathroom, dining room/study, and an open kitchen/dinette leading into the great room. From the open staircase, the second floor has four bedrooms and a four-piece bathroom. Primary bedroom has a walk-in closet and a four-piece ensuite.

THE HERON FLOORPLANS



MAIN FLOOR PLAN
Approximately 1082 SQ. FT.
(+/-) 35'4" WIDE (+/-) 50'4" DEEP



UPPER FLOOR PLAN
Approximately 1229 SQ. FT.



Elevations are artist renderings and may show optional items. Revised April 2026