

# THE LEWISPORTE B

  
BUNGALOW

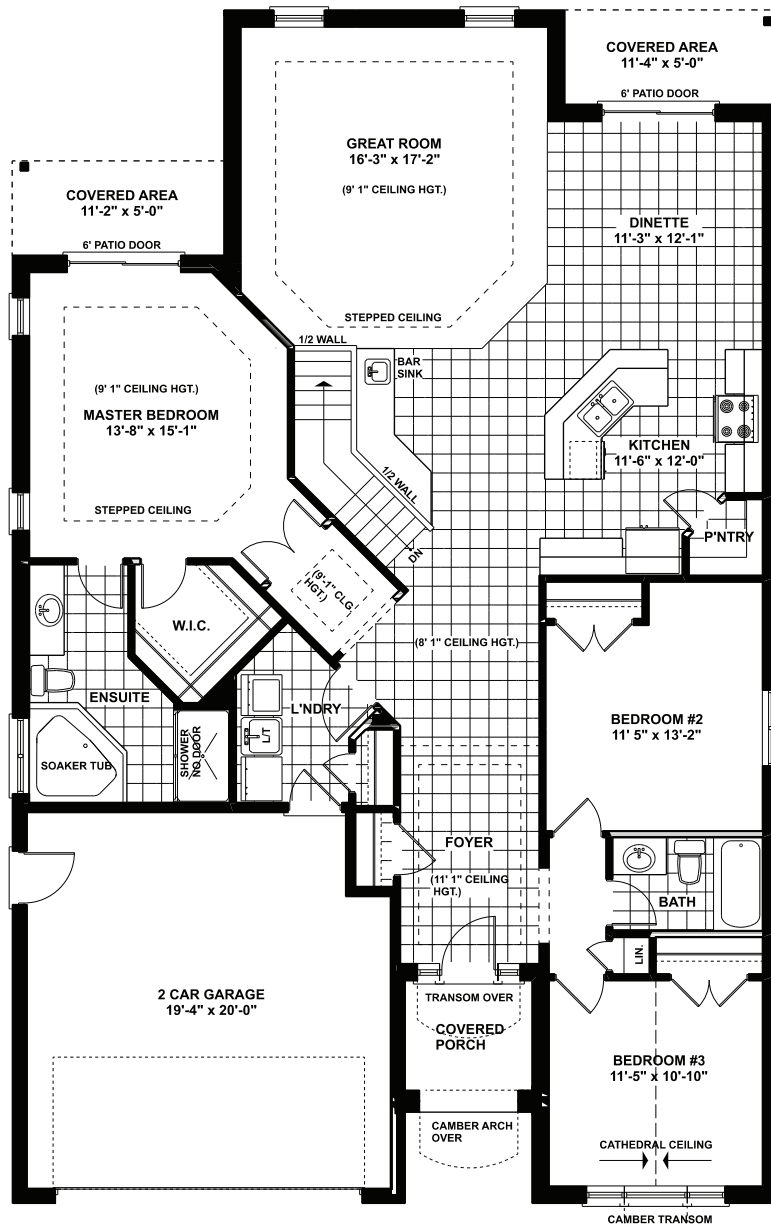


Approx. 1,900 sq.ft.

 3 Bed  2 Bath

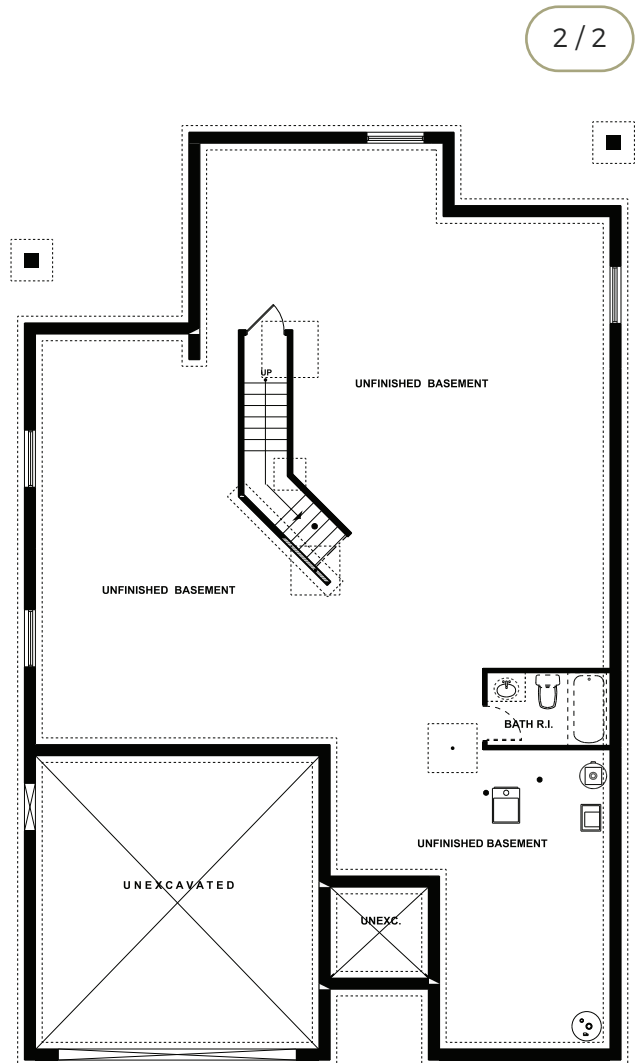
Approximately 1,900 sq.ft. bungalow with two-car garage. Features main floor laundry with an open concept kitchen/dining and great room. Primary bedroom with a spacious ensuite as well as two additional bedrooms accompanied by a four-piece bathroom.

# THE LEWISPORTE B FLOOR PLANS



## MAIN FLOOR PLAN

Approximately 1900 SQ. FT.  
 (+/-) 40' 8" WIDE (+/-) 63' 3" DEEP



## FOUNDATION LAYOUT

UNFINISHED



collierhomes.ca // (519) 633-9642

Elevations are artist renderings and may show optional items. Revised April 2026