

# THE MARYSTOWN B



2-STOREY

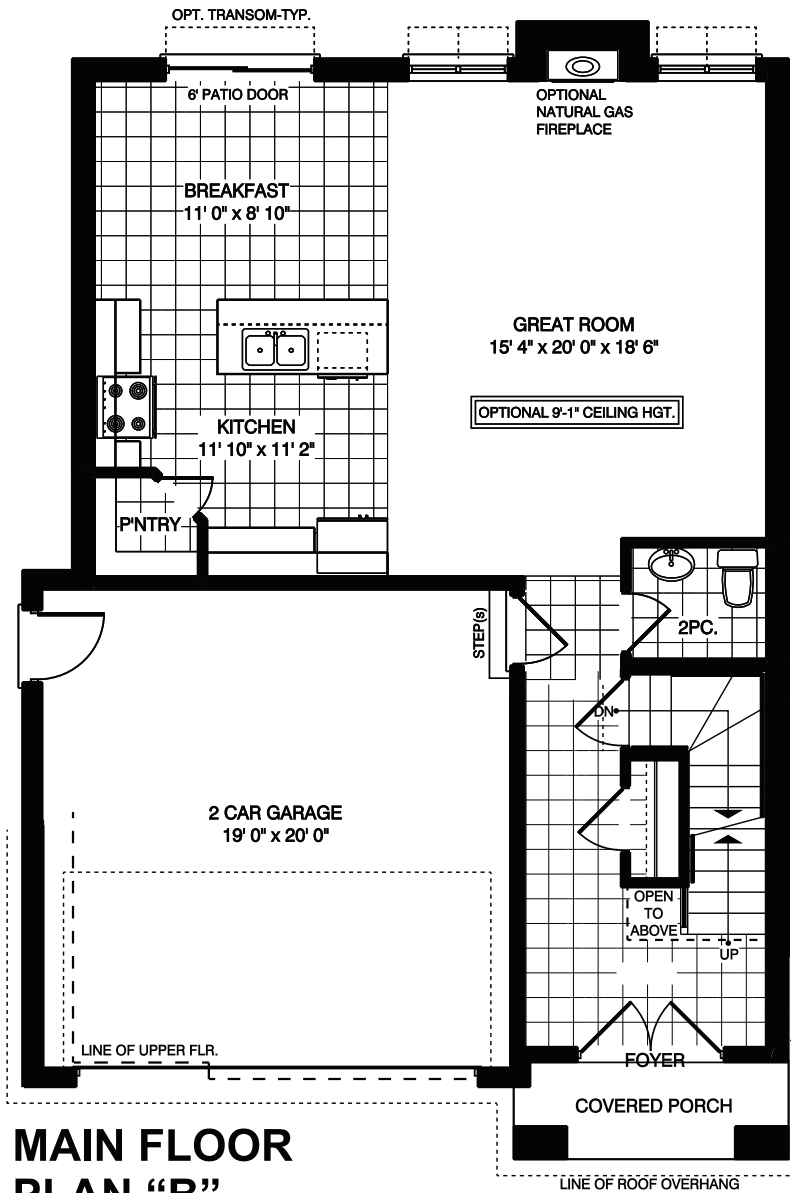


Approx. 2,060 sq.ft.

4 Bed 2.5 Bath

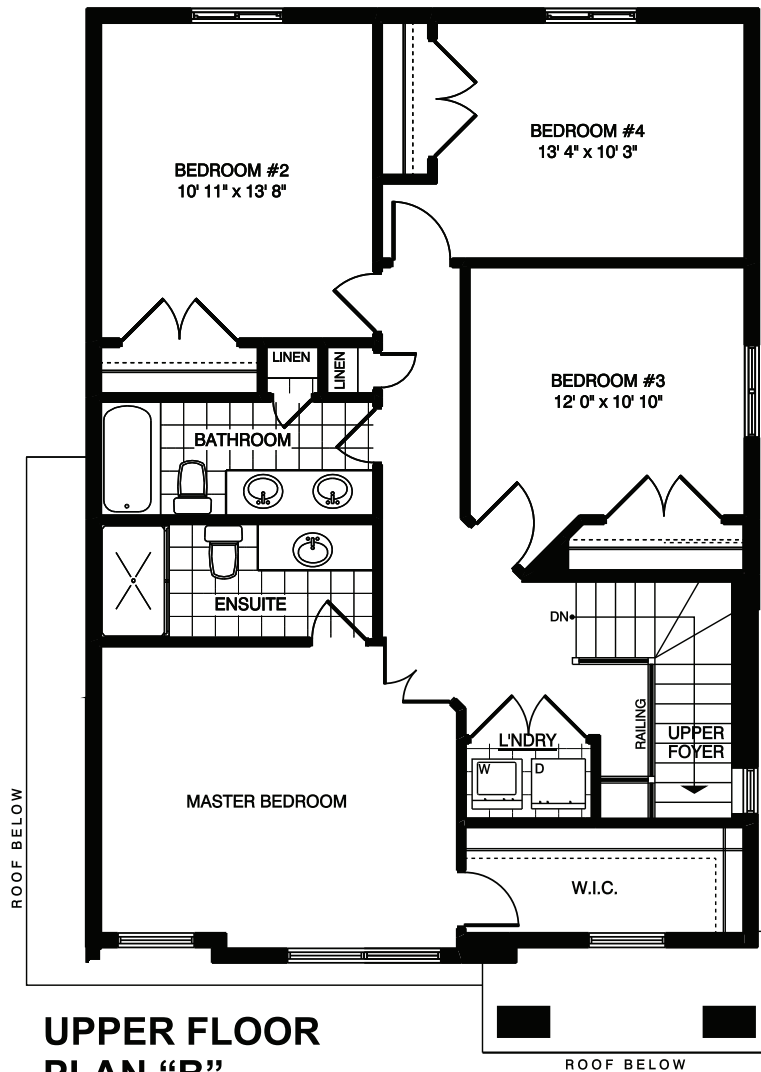
Approximately 2,060 sq. ft. two storey with a two-car garage. First floor has a two-piece bathroom, open concept kitchen, dining and great room. Second floor features a laundry room, four bedrooms, and two bathrooms.

# THE MARYSTOWN B FLOOR PLANS



## MAIN FLOOR PLAN "B"

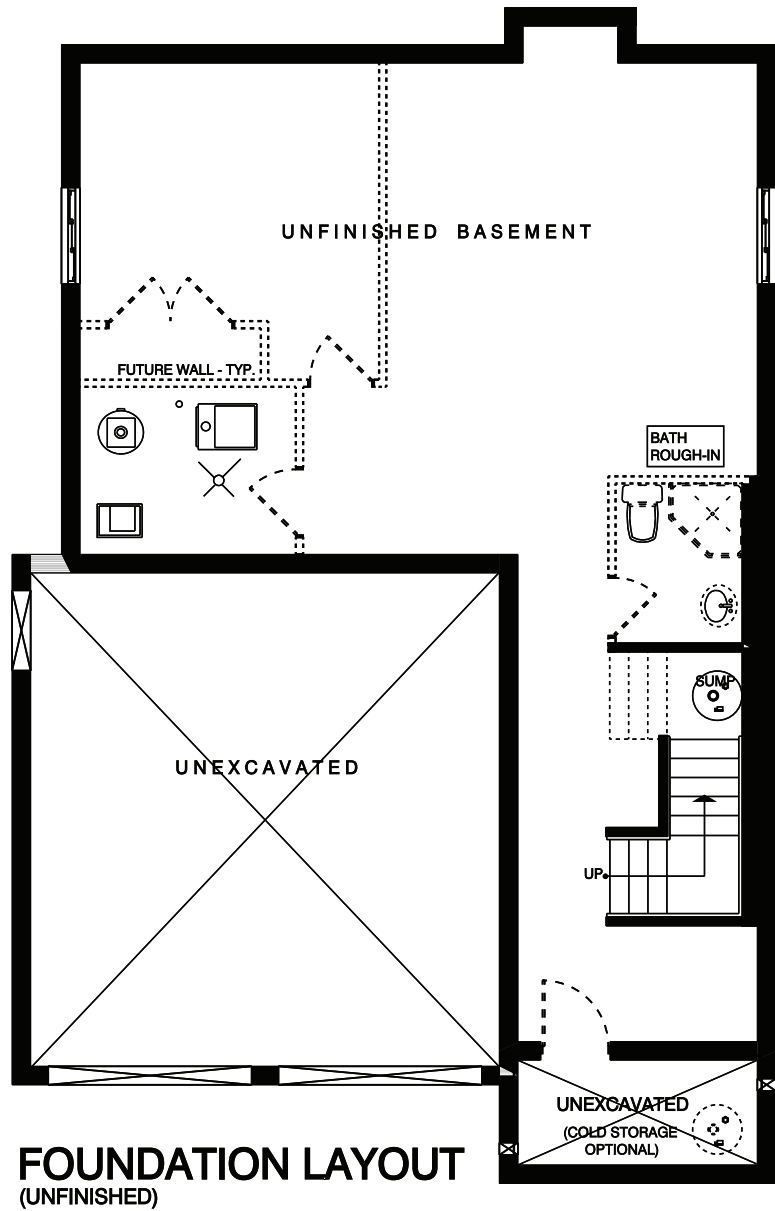
Approximately 844 SQ. FT.  
(+/-) 30' 11" WIDE (+/-) 46' 3" DEEP



## UPPER FLOOR PLAN "B"

Approximately 1216 SQ. FT.

# THE MARYSTOWN B FLOOR PLANS



**FOUNDATION LAYOUT**  
(UNFINISHED)