

# THE NEWCASTLE



2-STORY

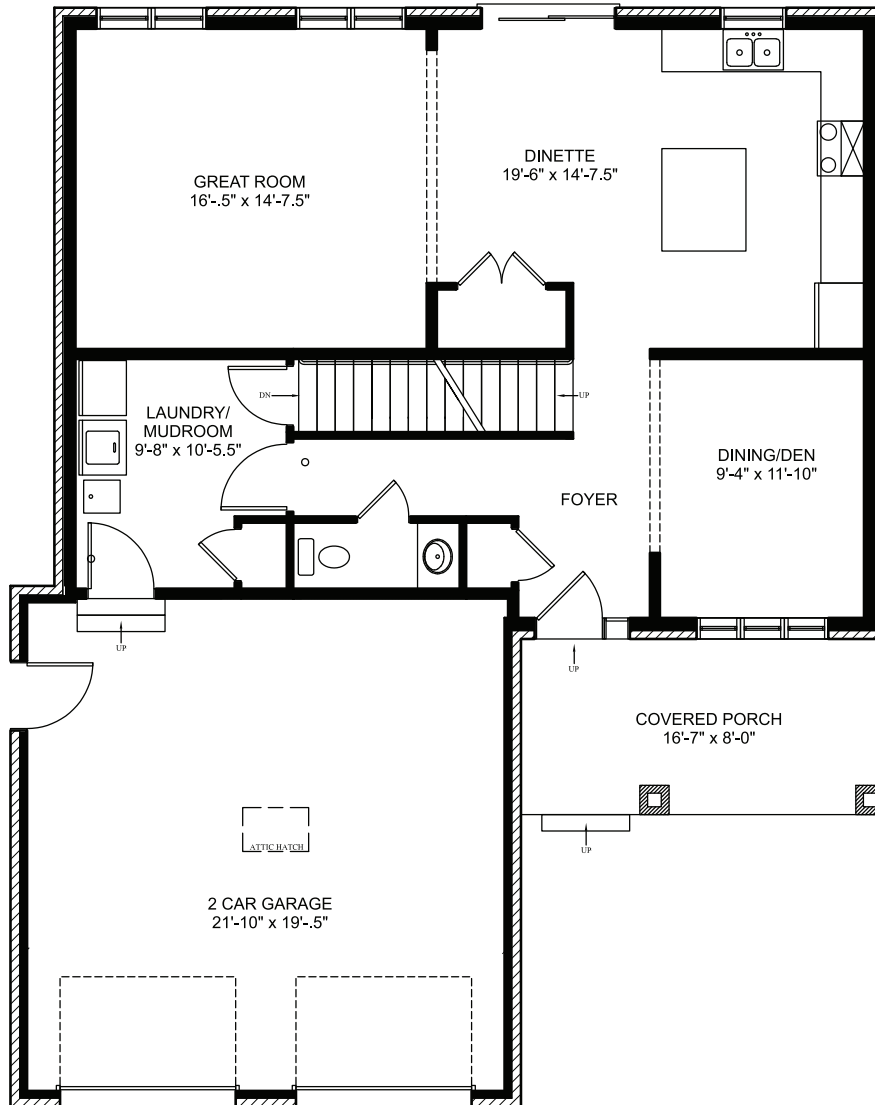


Approx. 2,062 sq.ft.

4 Bed 3 Bath

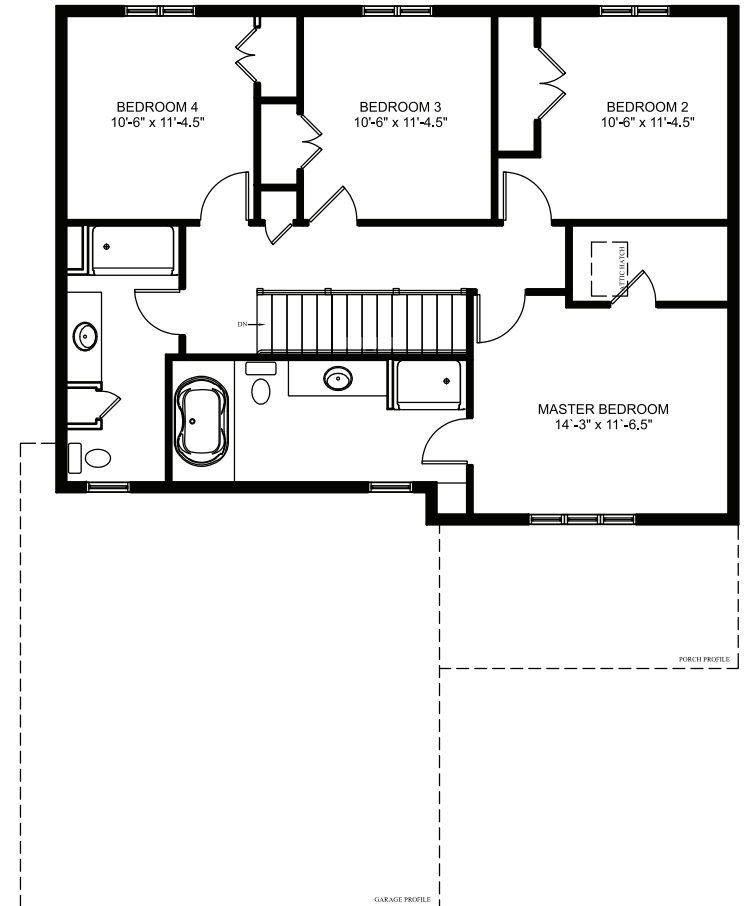
Approximately 2,062 sq. ft. two storey home with main floor laundry, two-piece bathroom, open concept great room, and kitchen/dinette. Second floor has four bedrooms with a four-piece bathroom. Primary bedroom has walk-in closet and ensuite with a 5' shower and Jacuzzi tub.

# THE NEWCASTLE FLOOR PLANS



## MAIN FLOOR PLAN

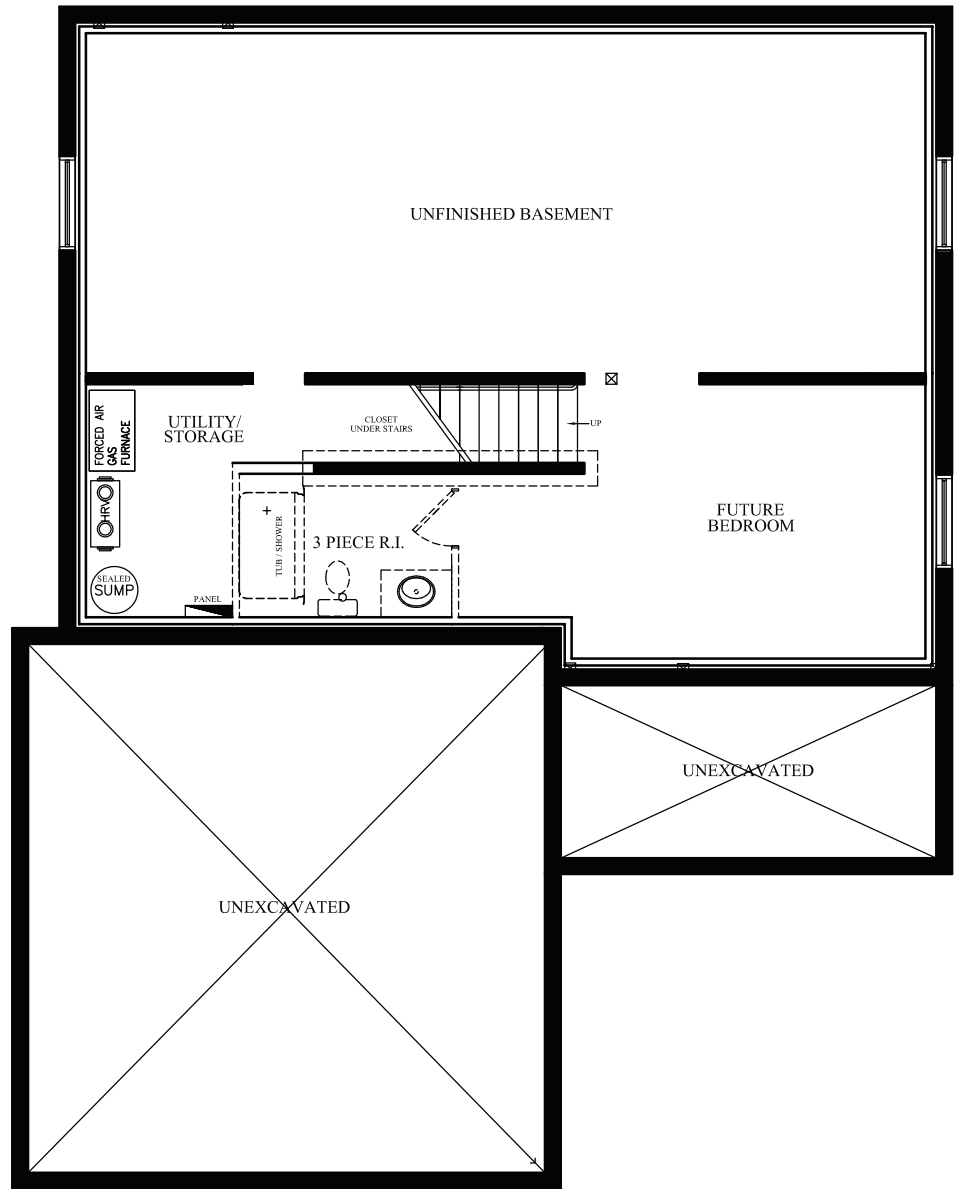
Approximately 1050 sq.ft.  
 (+/-) 37' 10" WIDE (+/-) 46' 0" DEEP



## UPPER FLOOR PLAN

Approximately 1012 sq.ft.

# THE NEWCASTLE FLOOR PLANS



**FOUNDATION LAYOUT**

Elevations are artist renderings and may show optional items. Revised April 2026