

# THE PARKWAY

  
BUNGALOW

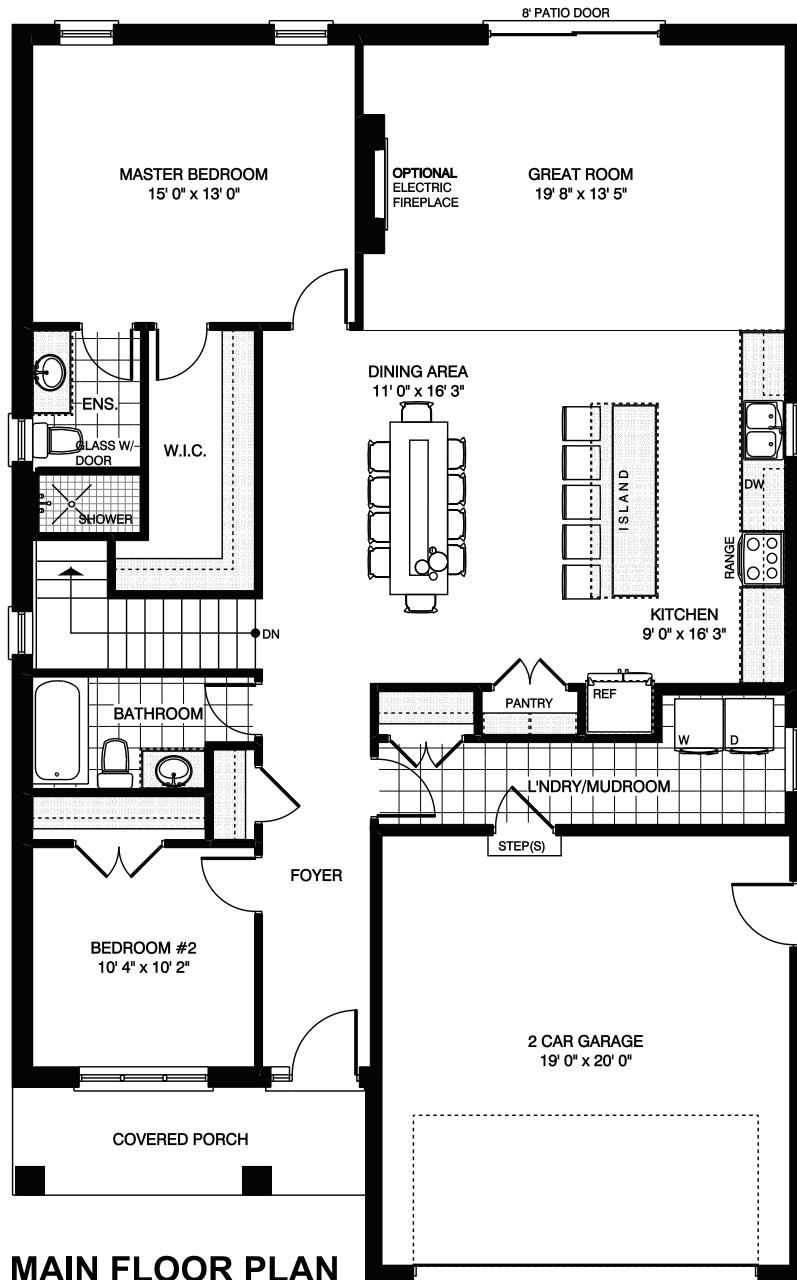


Approx. 1,588 sq.ft.

 2 Bed  2 Bath

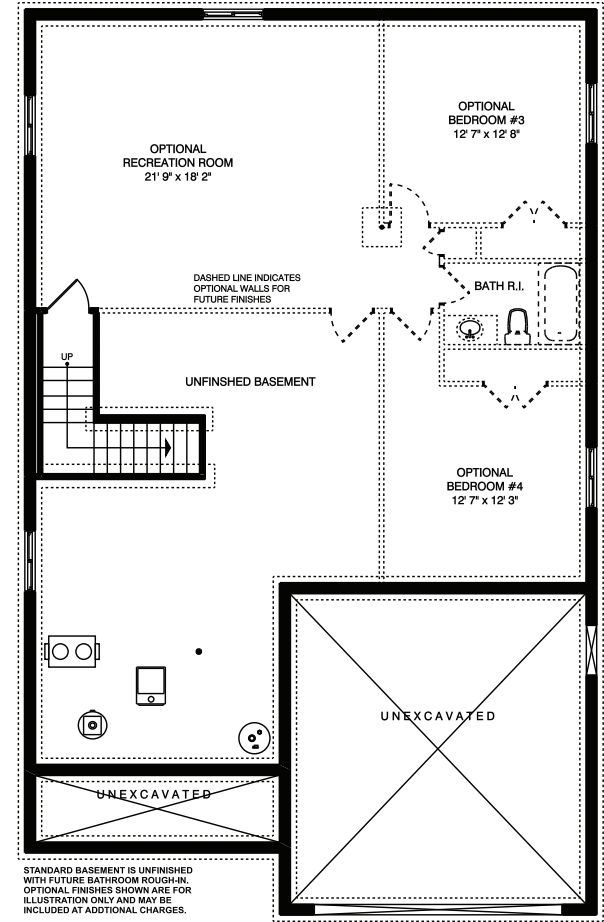
Approximately 1,588 sq.ft. bungalow with two-car garage. Open concept kitchen, dining and great room. Two bedrooms, two bathrooms, and main floor laundry. Optional electric fireplace.

# THE PARKWAY FLOOR PLANS



## MAIN FLOOR PLAN

Approximately 1588 SQ. FT.  
(+/-) 36' 10" WIDE (+/-) 58' 4" DEEP



## FOUNDATION PLAN

Approximately 903 SQ. FT.  
OPTIONAL FINISHED AREA

STANDARD BASEMENT IS UNFINISHED  
WITH FUTURE BATHROOM ROUGH-IN.  
OPTIONAL FINISHES SHOWN ARE FOR  
ILLUSTRATION ONLY AND MAY BE  
INCLUDED AT ADDITIONAL CHARGES.



collierhomes.ca // (519) 633-9642