

# THE SEABREEZE



CONDO

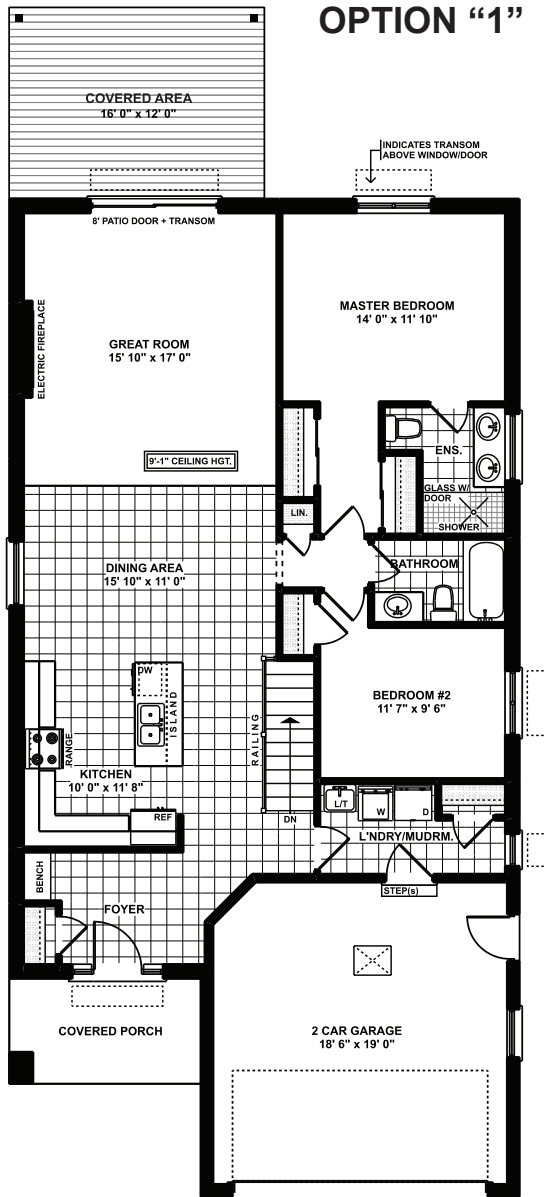


Approx. 1,453 sq.ft.

2 Bed 2 Bath

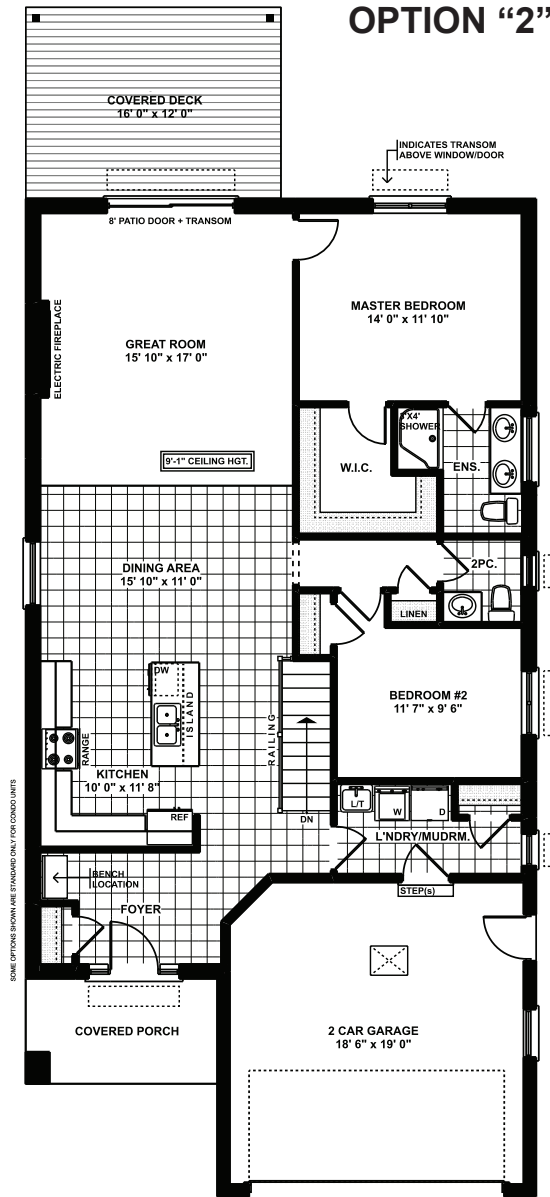
Approximately 1,453 sq.ft. bungalow with a two-car garage. 9' ceilings and transom windows make up this open concept living room, electric fireplace, kitchen and dinette. Main floor consists of two bedrooms, laundry, four-piece main and three-piece ensuite with custom shower.

# THE SEABREEZE FLOOR PLANS



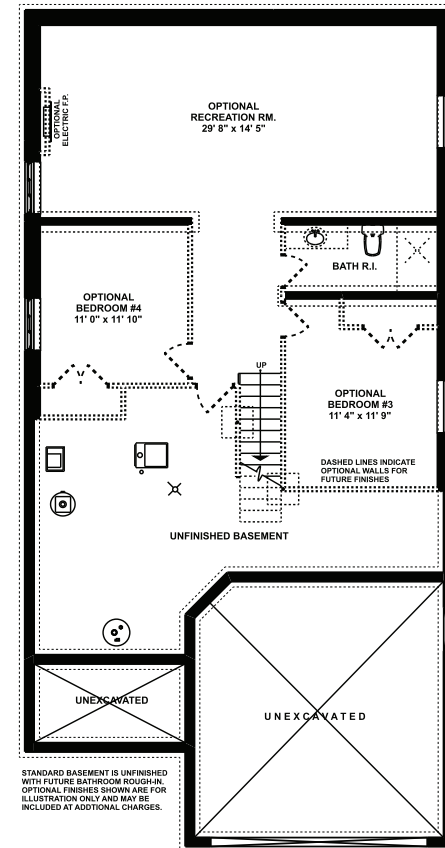
## MAIN FLOOR PLAN "A"

Approximately 1453 SQ. FT.  
(+/-) 32' 0" WIDE (+/-) 62' 7" DEEP



## MAIN FLOOR PLAN "B"

Approximately 1453 SQ. FT.  
(+/-) 32' 0" WIDE (+/-) 62' 7" DEEP



## FOUNDATION PLAN

Approximately 942 SQ. FT.  
OPTIONAL FINISHED



collierhomes.ca // (519) 633-9642

Elevations are artist renderings and may show optional items.