

THE SEABREEZE


BUNGALOW

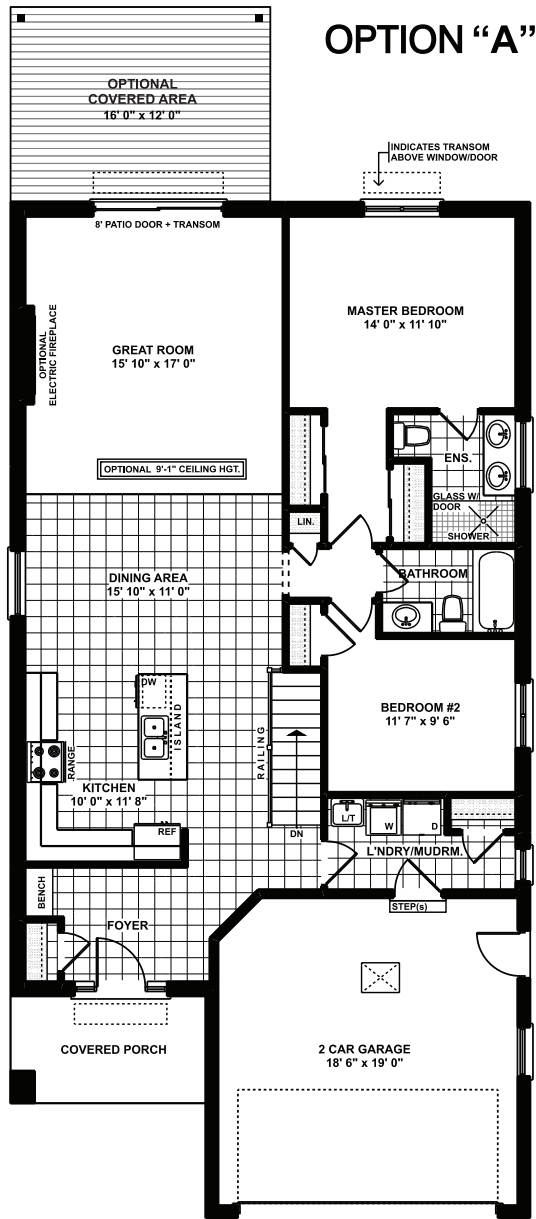


Approx. 1,453 sq.ft.

 2 Bed  2 Bath

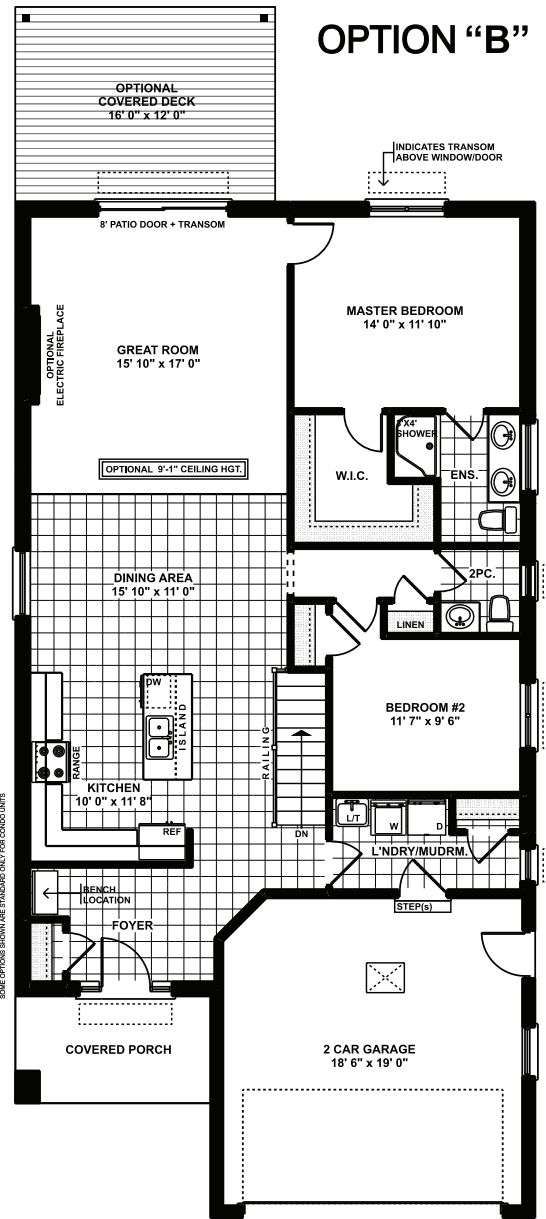
Approximately 1,453 sq.ft. bungalow with two-car garage. 9' ceilings and transom windows make up this open concept living room, electric fireplace, kitchen and dinette. Main floor consists of two bedrooms, laundry, four-piece main and three-piece ensuite with custom shower.

THE SEABREEZE FLOOR PLANS



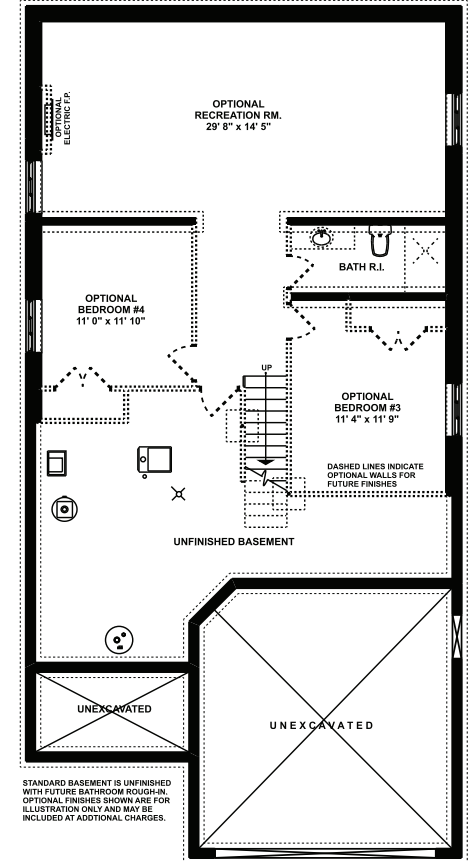
MAIN FLOOR PLAN "A"

Approximately 1453 SQ. FT.
(+/-) 32' 0" WIDE (+/-) 62' 7" DEEP



MAIN FLOOR PLAN "B"

Approximately 1453 SQ. FT.
(+/-) 32' 0" WIDE (+/-) 62' 7" DEEP



FOUNDATION PLAN

Approximately 942 SQ. FT.
OPTIONAL FINISHED

