

THE WESTGATE



2-STOREY

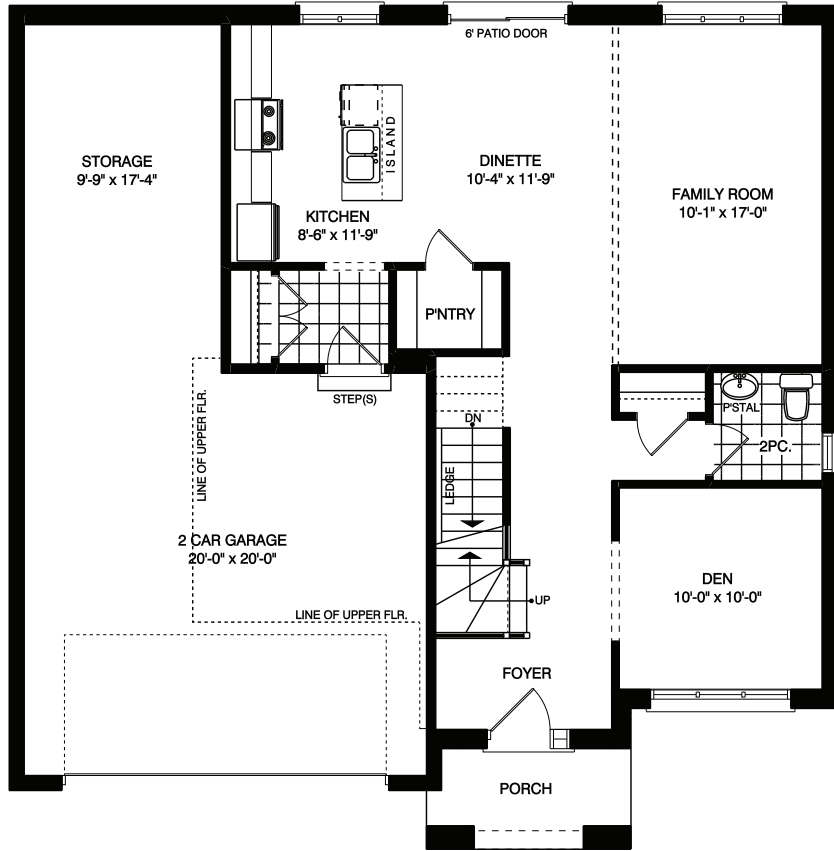


Approx. 2,009 sq.ft.

4 Bed 3 Bath

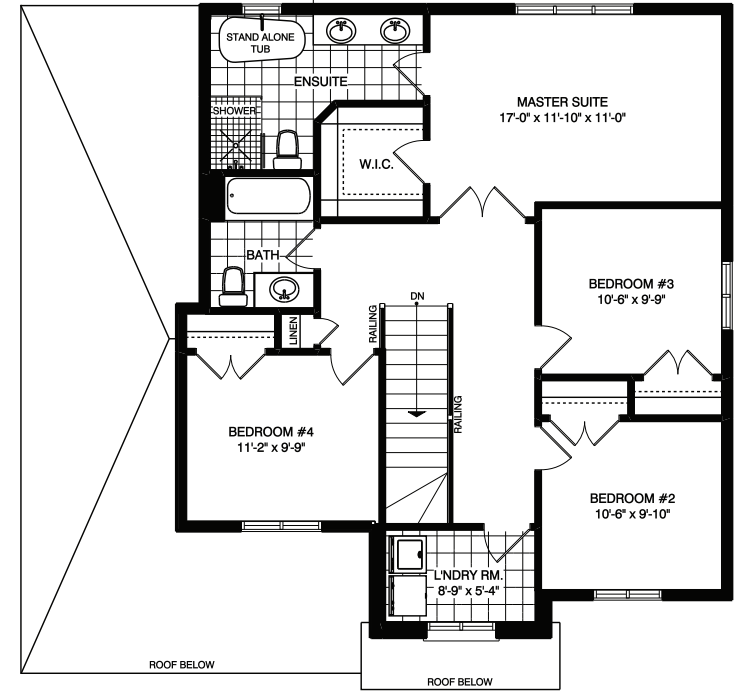
Approximately 2,009 sq. ft. two storey with main floor two-piece bathroom, kitchen/dinette and living room. Second floor has four bedrooms with a four-piece bathroom and laundry room. Primary bedroom has a walk-in closet and three-piece bathroom.

THE WESTGATE FLOOR PLANS



MAIN FLOOR LAYOUT

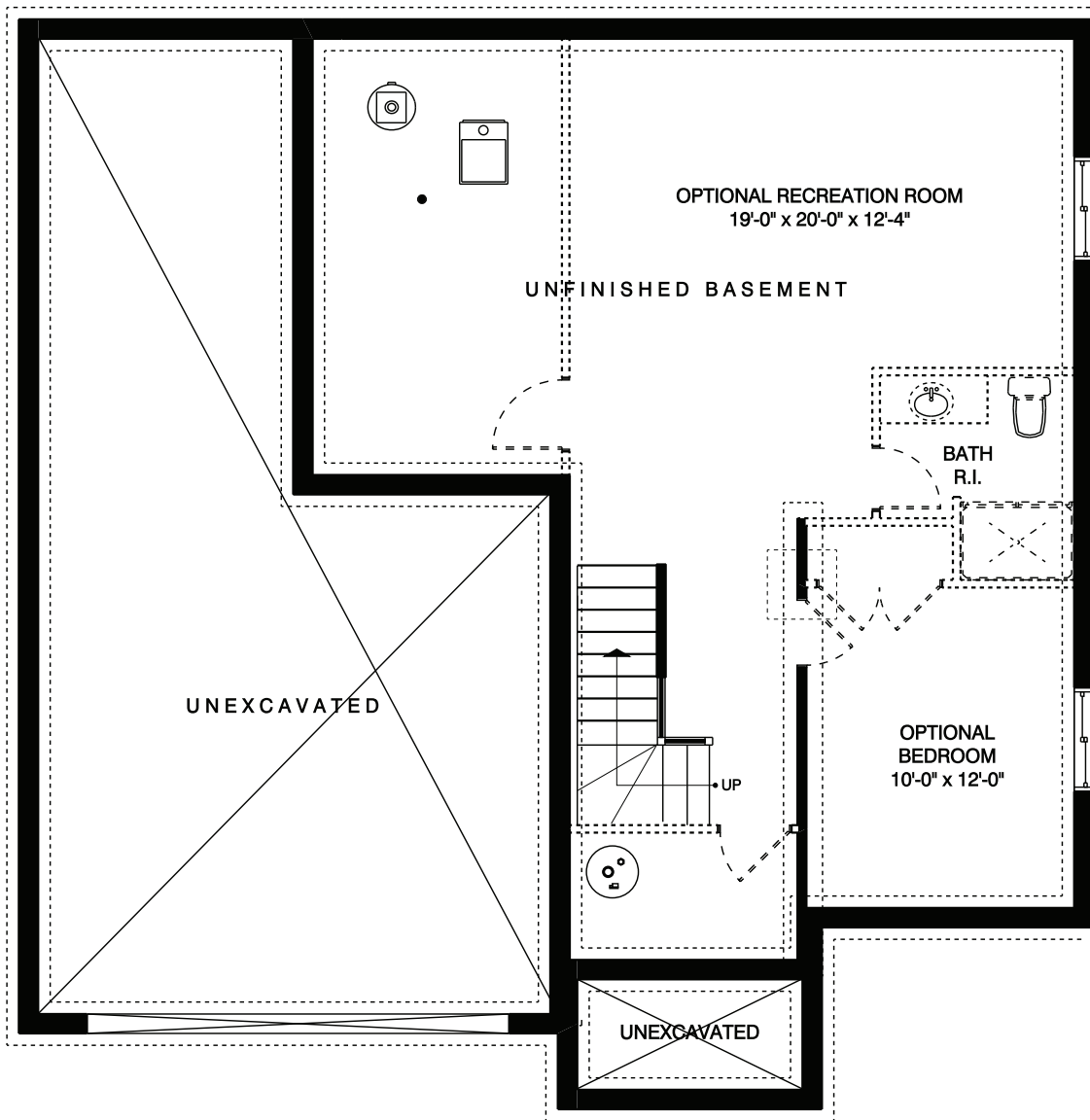
Approximately 928 SQ. FT.
 (+/-) 41' 4" WIDE (+/-) 41' 11" DEEP



UPPER FLOOR LAYOUT

Approximately 1081 SQ. FT.

THE WESTGATE FLOORPLANS



FOUNDATION LAYOUT
624 SQ. FT. OPTIONAL FINISHED AREA