



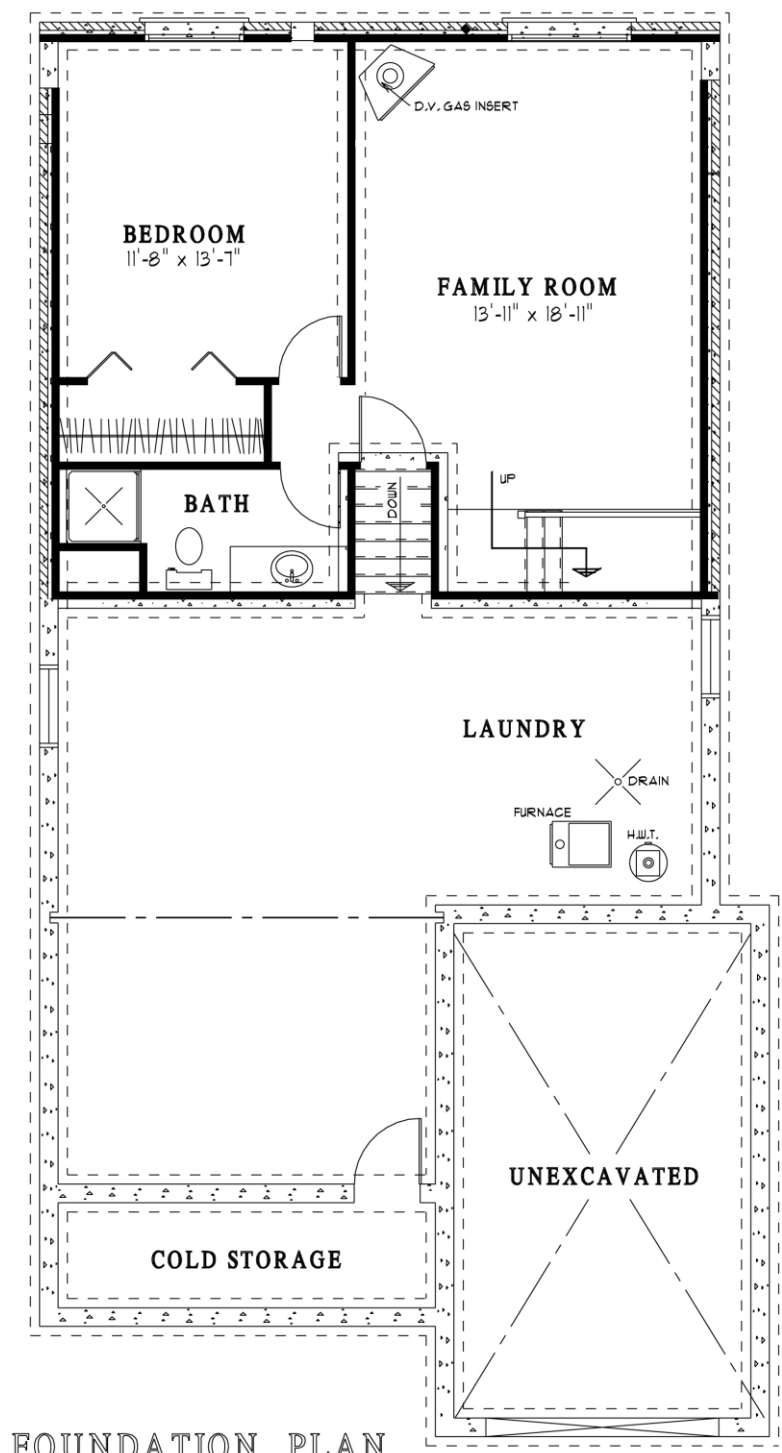
*Quality Homes  
At Affordable Prices*

# THE BAYVIEW II

Approximately 1840 sq. ft. backsplit with garage. Main floor has 3 bedrooms, 4 piece washroom, with an open kitchen, dining room and living room. The third level which is open from kitchen has a rec room, bedroom and 3 piece washroom.

(519) 633-9642

Elevations are artist renderings and may show optional items.



**MAIN FLOOR PLAN**  
 1200 SQ. FT., 29'-6" WIDE x 57'-2" DEEP - OVERALL

**FOUNDATION PLAN**



*Quality Homes  
 At Affordable Prices*

Floor plans are artists renderings and may show optional items.