



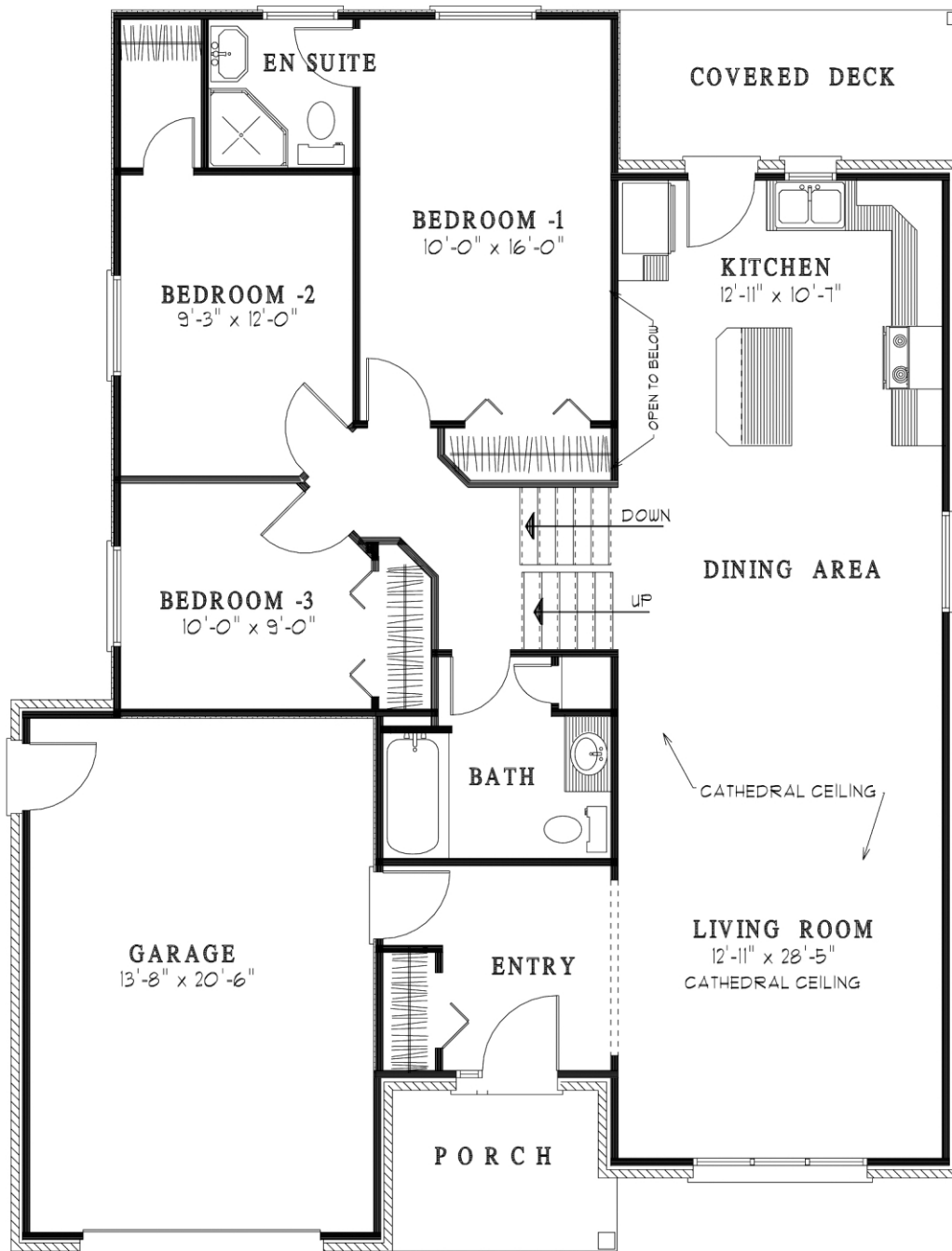
*Quality Homes  
At Affordable Prices*

# THE LAKEVIEW II

Approximately 1900 sq. ft. side split. It has an open living room, kitchen/dinette leading onto a covered rear deck. 2nd Level has 3 bedrooms and a 4 piece washroom. Master bedroom has a 3 piece ensuite. Lower 3rd level has an open great room with a 3 piece washroom.

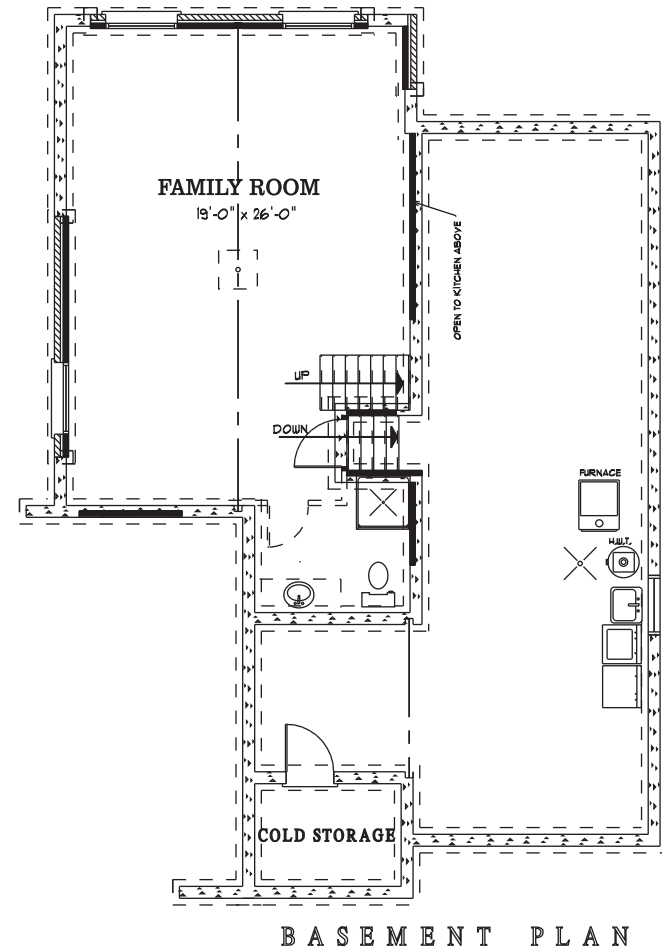
(519) 633-9642

Elevations are artist renderings and may show optional items.



## MAIN FLOOR PLAN

1274 SQ. FT. 31'-11" WIDE x 49'-6" DEEP OVERALL



## BASEMENT PLAN



**Quality Homes**  
**At Affordable Prices**

Floor plans are artists renderings and may show optional items.