



**Collier
Homes**
INC.

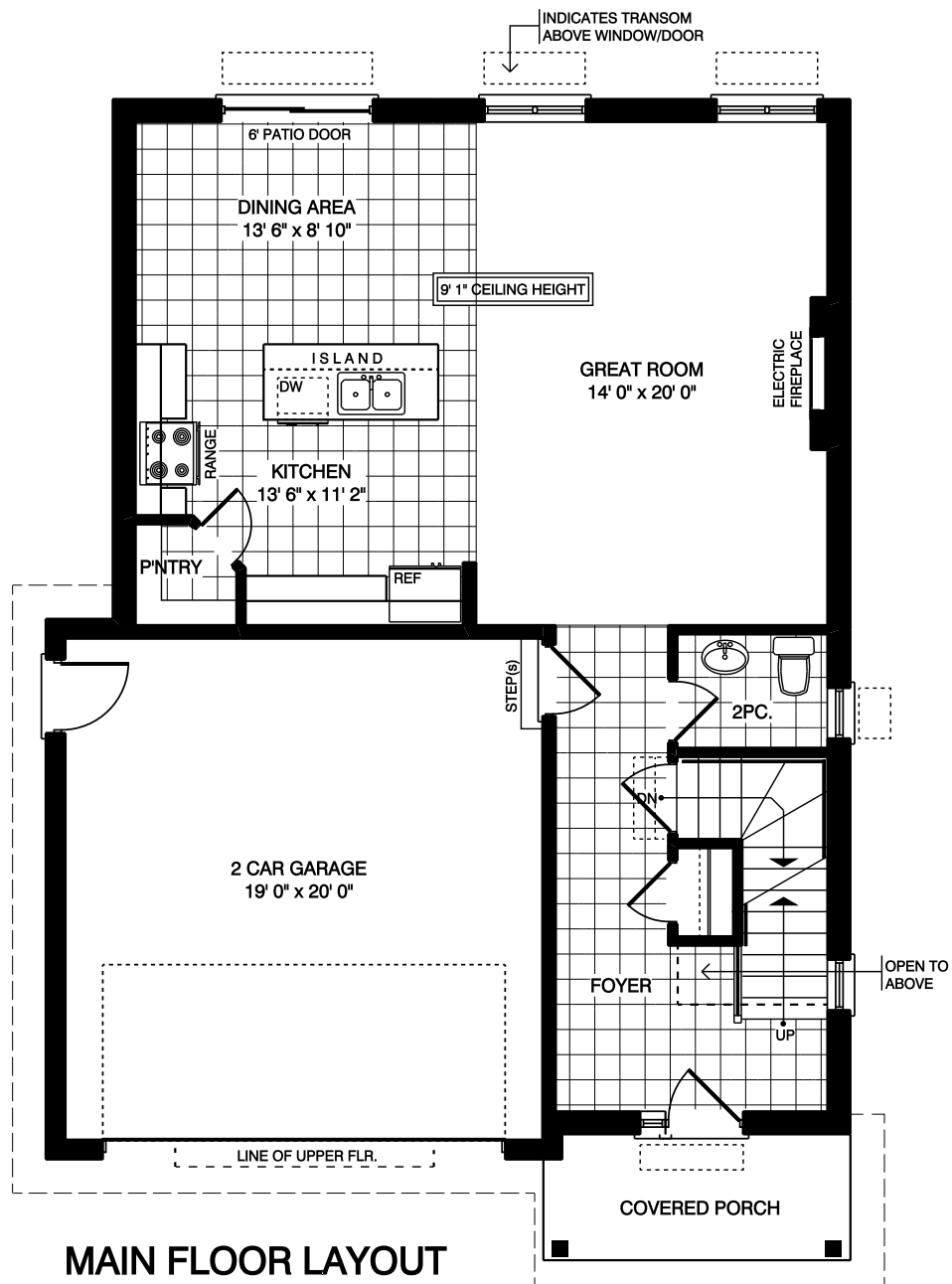
*Quality Homes
at Affordable Prices*

519-633-9642
www.collierhomes.ca

THE AVONDALE

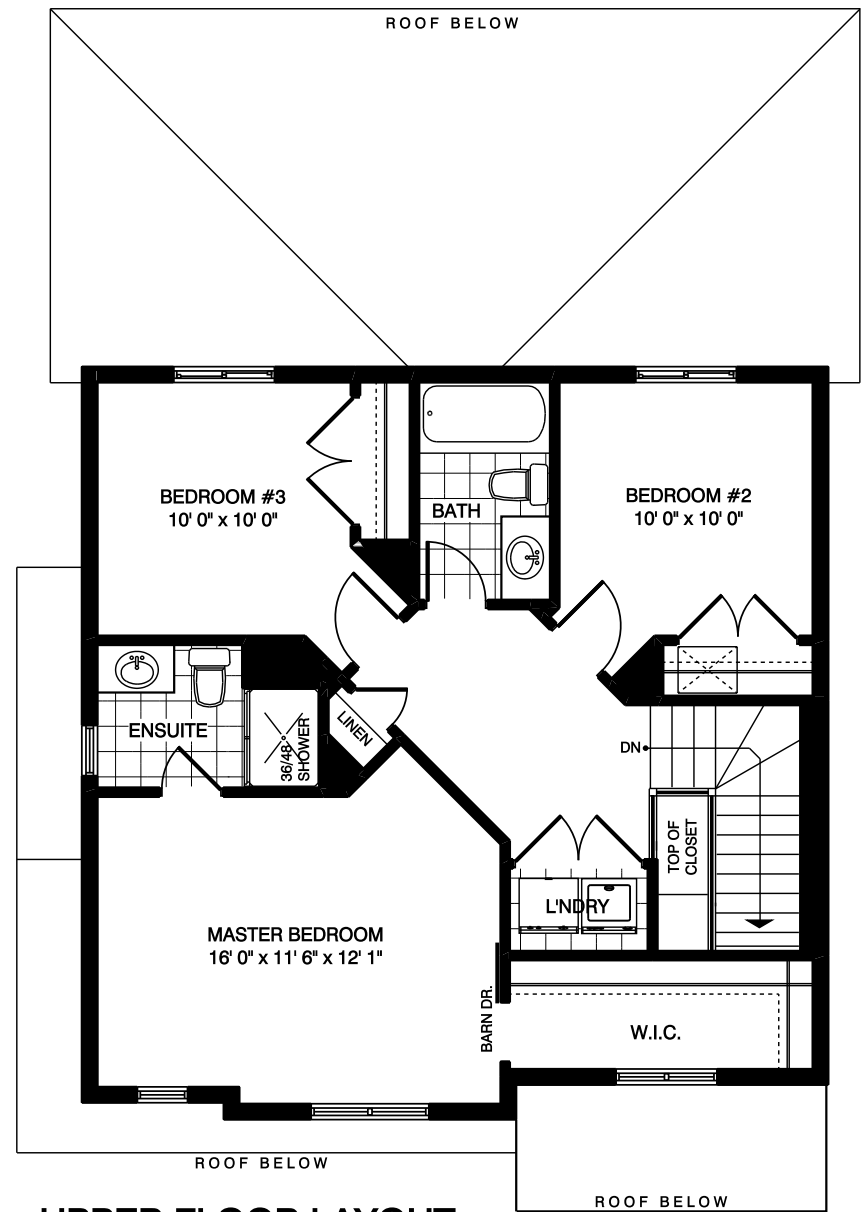
Approximately 1728 sq. ft. two storey with a two car garage. 1st Floor has a 2-piece washroom, open concept kitchen, dining and great room. 2nd Floor contains laundry room, 3 bedrooms and 4-piece washroom. Master bedroom has a walk in closet and 3-piece ensuite.

Elevations are artist renderings and may show optional items.



MAIN FLOOR LAYOUT

Approximately 871 SQ. FT.
(+/-) 32' 0" WIDE (+/-) 46' 2" DEEP



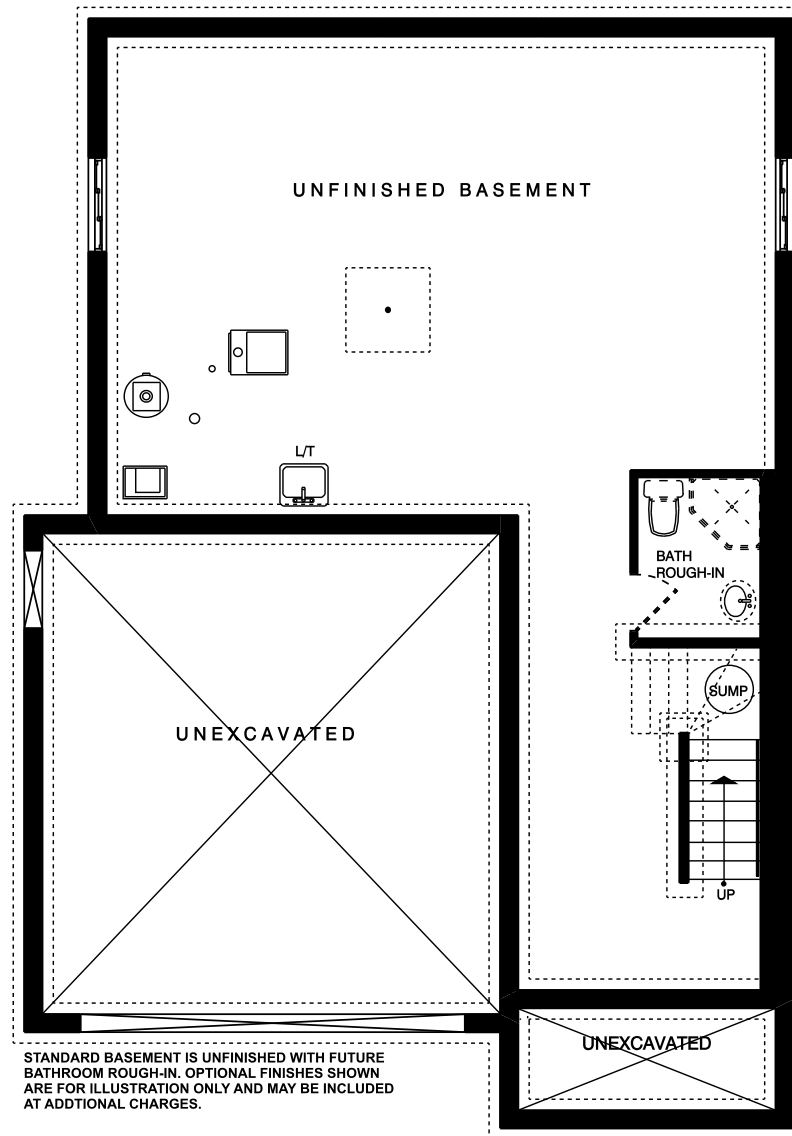
UPPER FLOOR LAYOUT

Approximately 857 SQ. FT.

*Floor plans are artists renderings
and may show optional items.*

**Collier
Homes**
INC.

*Quality Homes
at Affordable Prices*



**FOUNDATION LAYOUT
(unfinished)**

**Collier
Homes**
INC.

*Quality Homes
at Affordable Prices*

*Floor plans are artists renderings
and may show optional items.*