



*Quality Homes
At Affordable Prices*

THE HERON

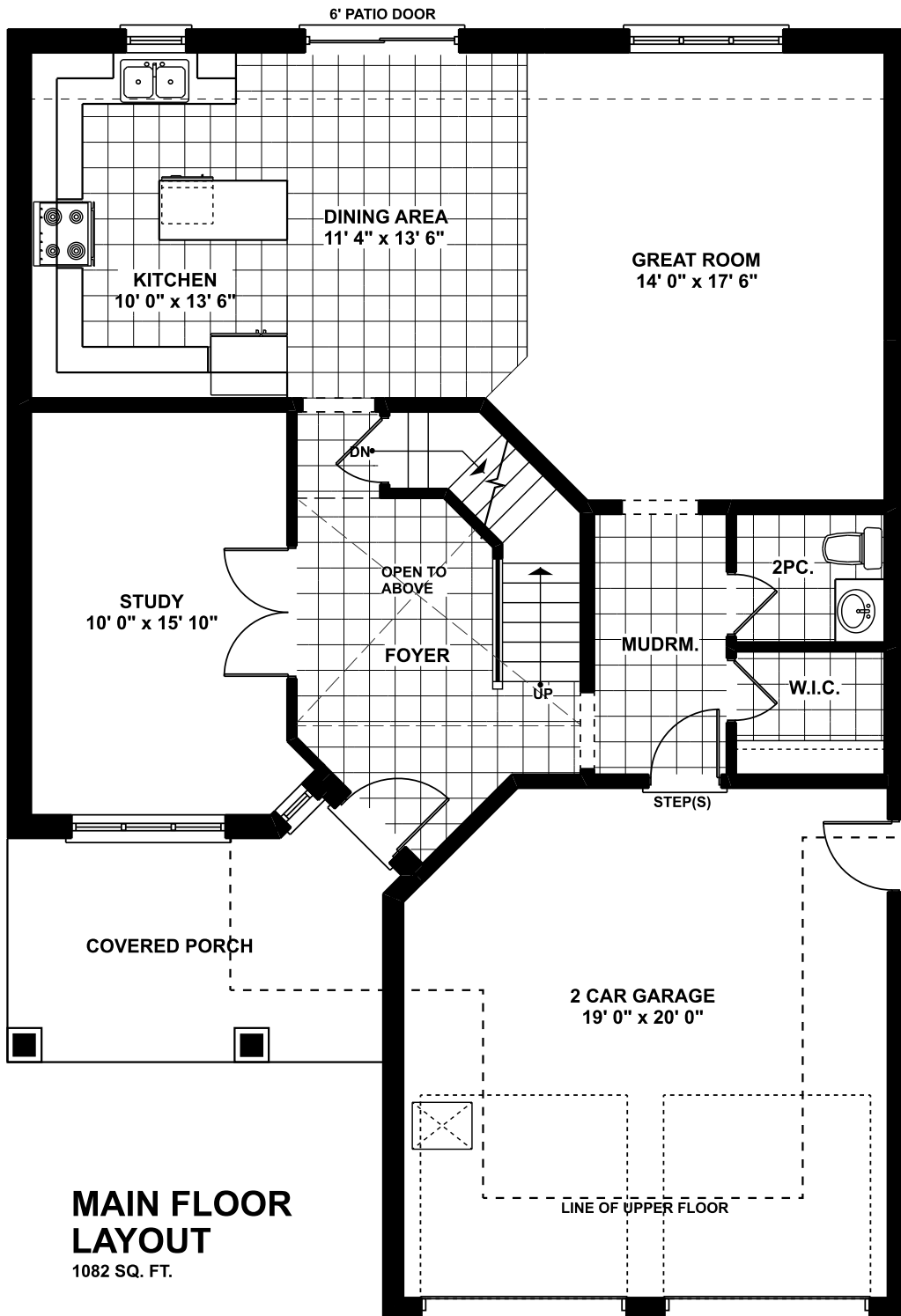
Approximately 2300 sq. ft. 2 storey with 2 car garage.

1st Floor has a spacious foyer, 2 piece washroom, dining room/study, and an open kitchen/dinette leading into the great room.

From the open staircase leading to the 2nd floor, it has 4 bedrooms and a 4 piece washroom. Master bedroom has a walk-in closet and a 4 piece ensuite.

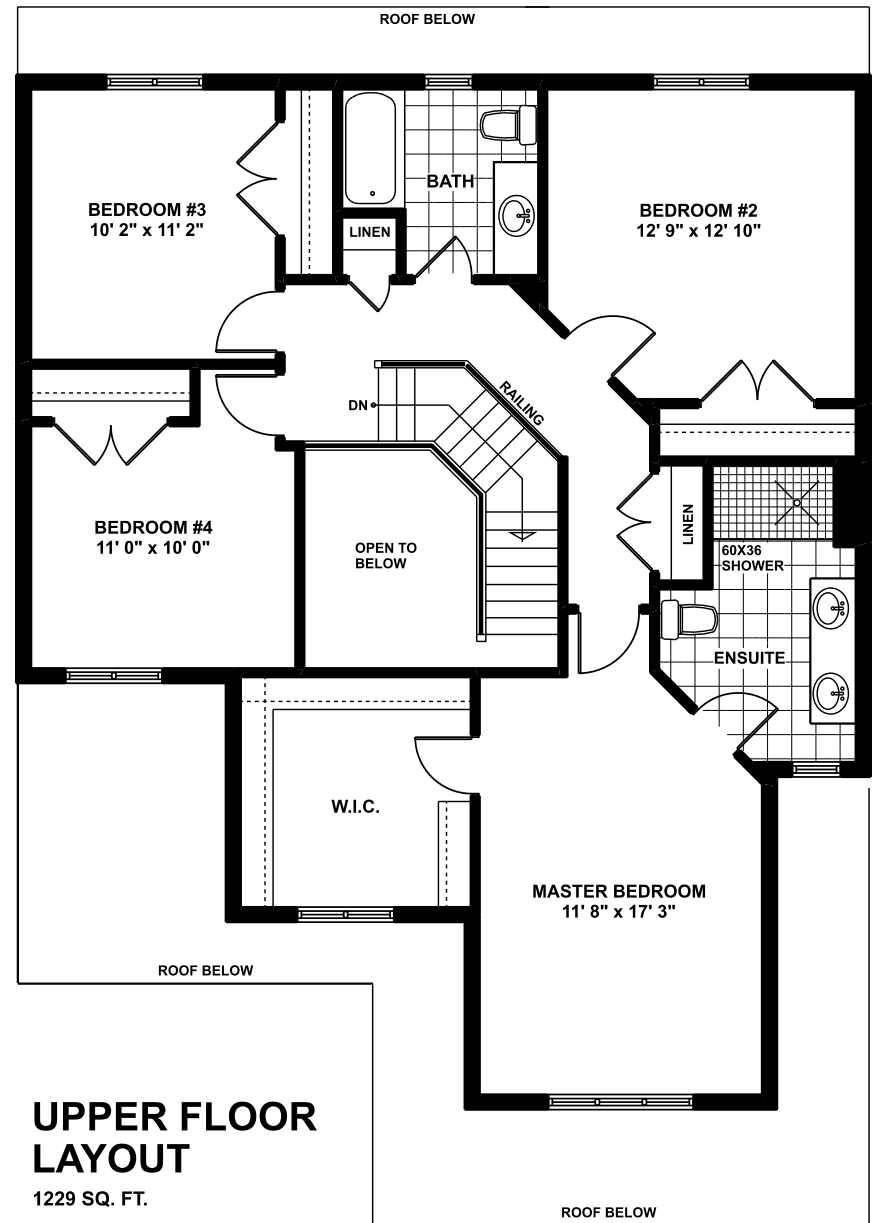
(519) 633-9642

Elevations are artist renderings and may show optional items.



MAIN FLOOR LAYOUT

1082 SQ. FT.



UPPER FLOOR LAYOUT

1229 SQ. FT.



Floor plans are artists renderings and may show optional items.