



**Collier  
Homes**  
INC.

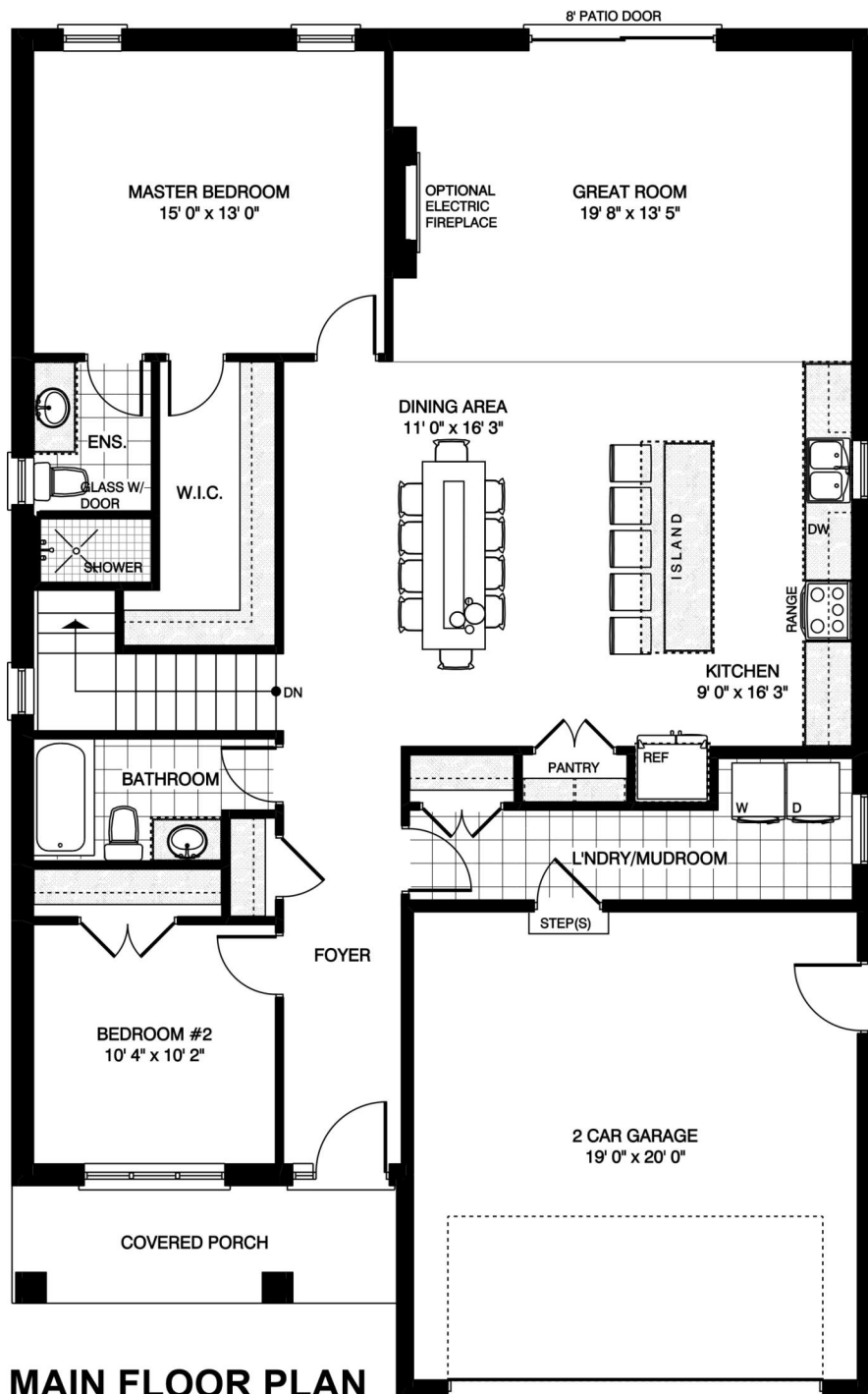
*Quality Homes  
at Affordable Prices*

**519-633-9642**  
[www.collierhomes.ca](http://www.collierhomes.ca)

# THE PARKWAY

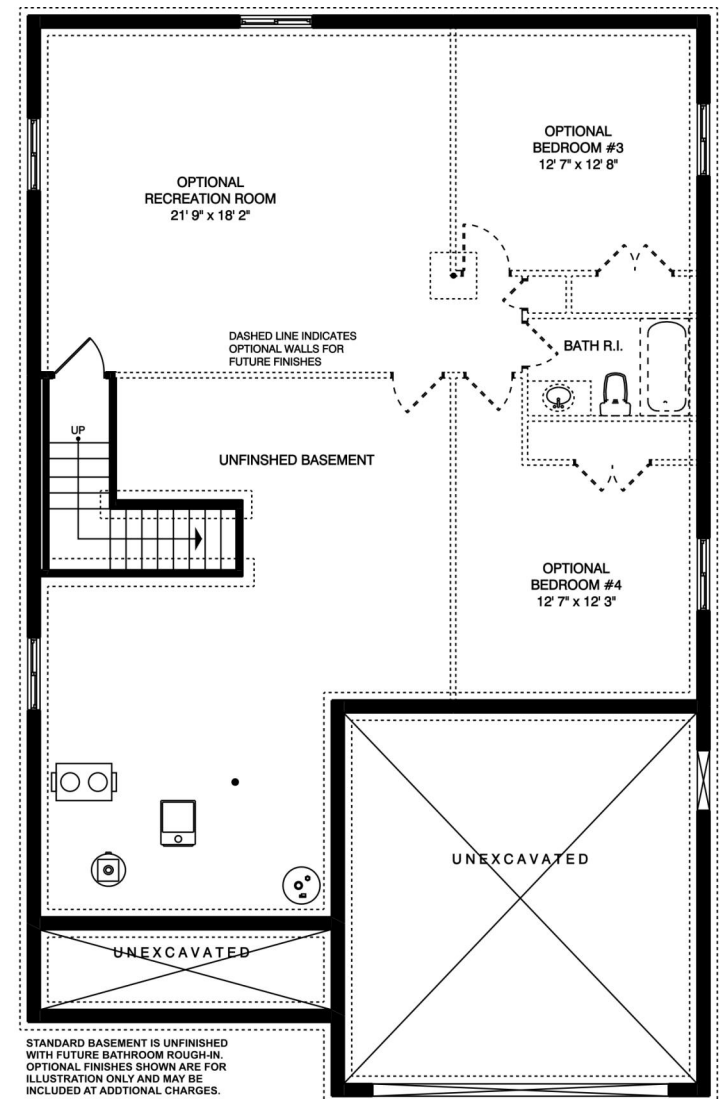
Approximately 1588 sq. ft. bungalow with 2 car garage. Open concept kitchen, dining, and great room. 2 Bedrooms, 2 washrooms, and main floor laundry. Optional electric fireplace.

Elevations are artist renderings and may show optional items.



## MAIN FLOOR PLAN

Approximately 1588 SQ. FT.  
(+/-) 36' 10" WIDE (+/-) 58' 4" DEEP



STANDARD BASEMENT IS UNFINISHED  
WITH FUTURE BATHROOM ROUGH-IN.  
OPTIONAL FINISHES SHOWN ARE FOR  
ILLUSTRATION ONLY AND MAY BE  
INCLUDED AT ADDITIONAL CHARGES.

## FOUNDATION PLAN

Approximately 903 SQ. FT.  
OPTIONAL FINISHED AREA

**Collier  
Homes**  
INC.

*Quality Homes  
at Affordable Prices*

*Floor plans are artists renderings  
and may show optional items.*