



**Collier
Homes**
INC.

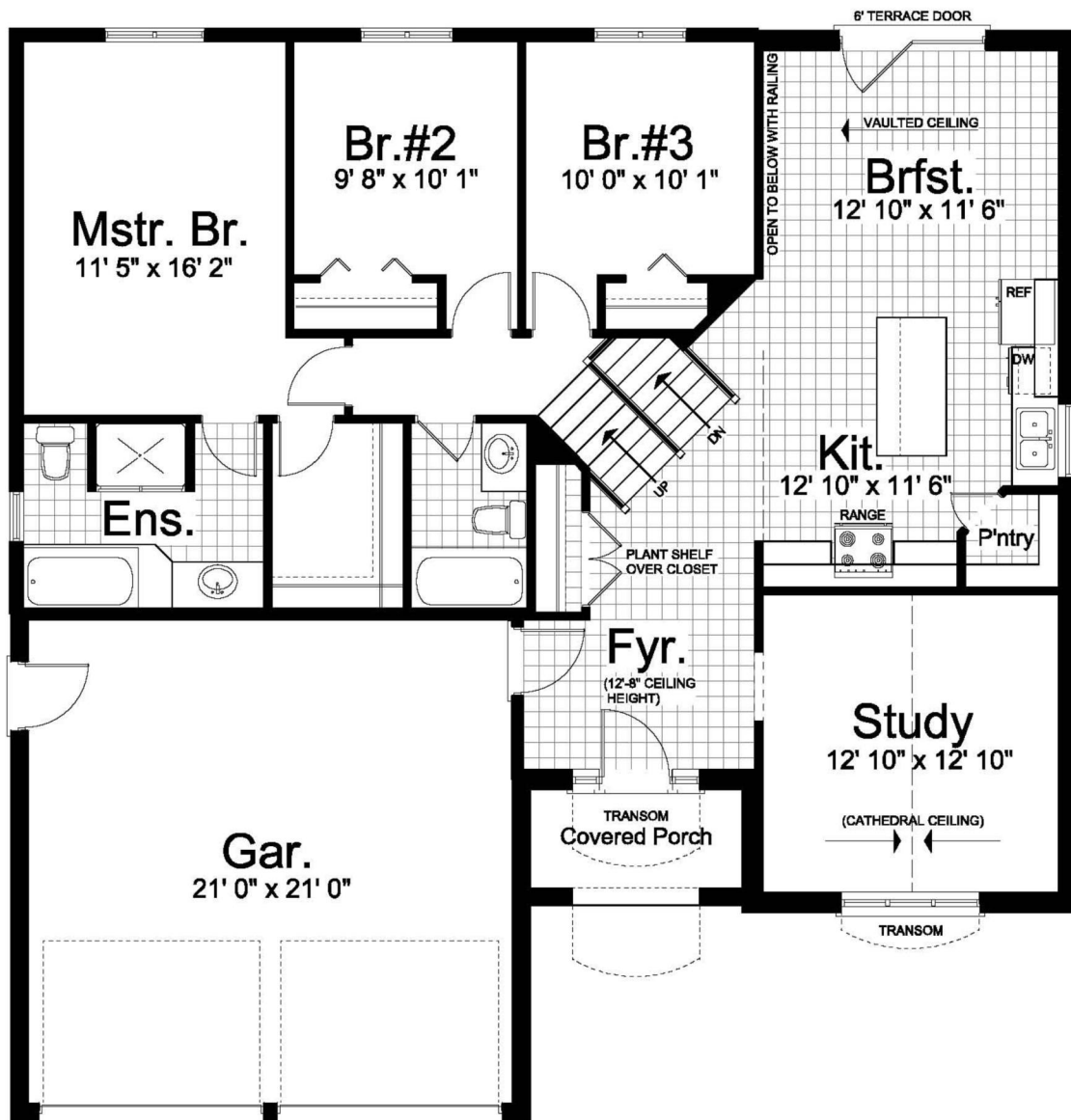
*Quality Homes
at Affordable Prices*

519-633-9642
www.collierhomes.ca

THE SPRINGDALE

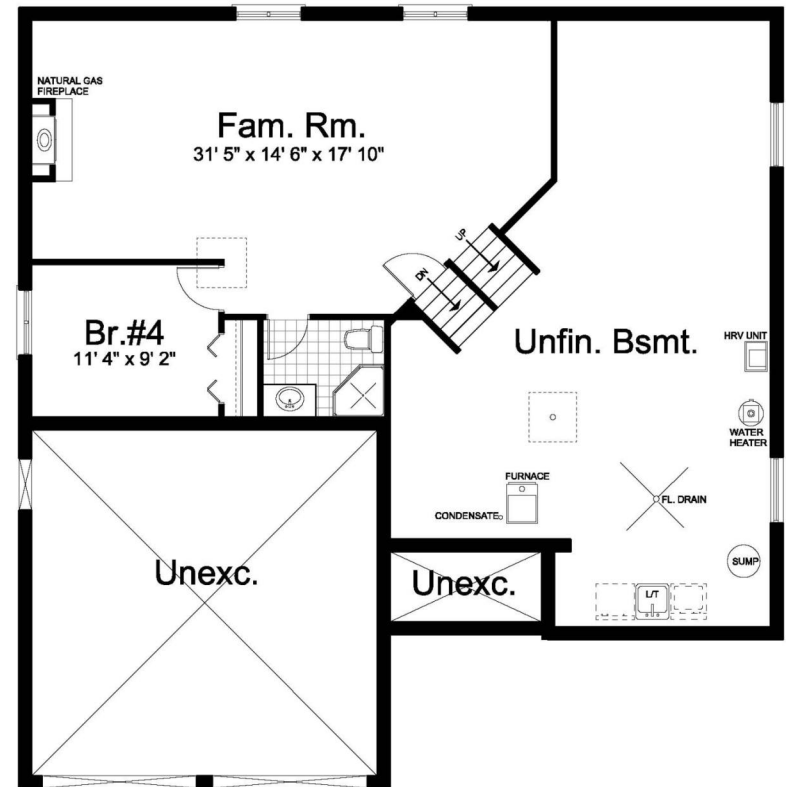
Approximately 2110 sq.ft sidesplit with a two car garage. Kitchen/dinette and living room on the main floor. 2nd floor has 3 bedrooms and a 4 piece washroom. Master bedroom has a walk in closet and a 4 piece ensuite. Lower level has an open concept family room, bedroom and a 3 piece washroom.

Elevations are artist renderings and may show optional items.



MAIN FLOOR PLAN

Approximately 1445 SQ. FT.
 (+/-) 46' 4" WIDE (+/-) 47' 4" DEEP



FOUNDATION PLAN

Approximately 665 SQ. FT.

**Collier
Homes**
INC.

*Quality Homes
at Affordable Prices*

*Floor plans are artists renderings
and may show optional items.*