



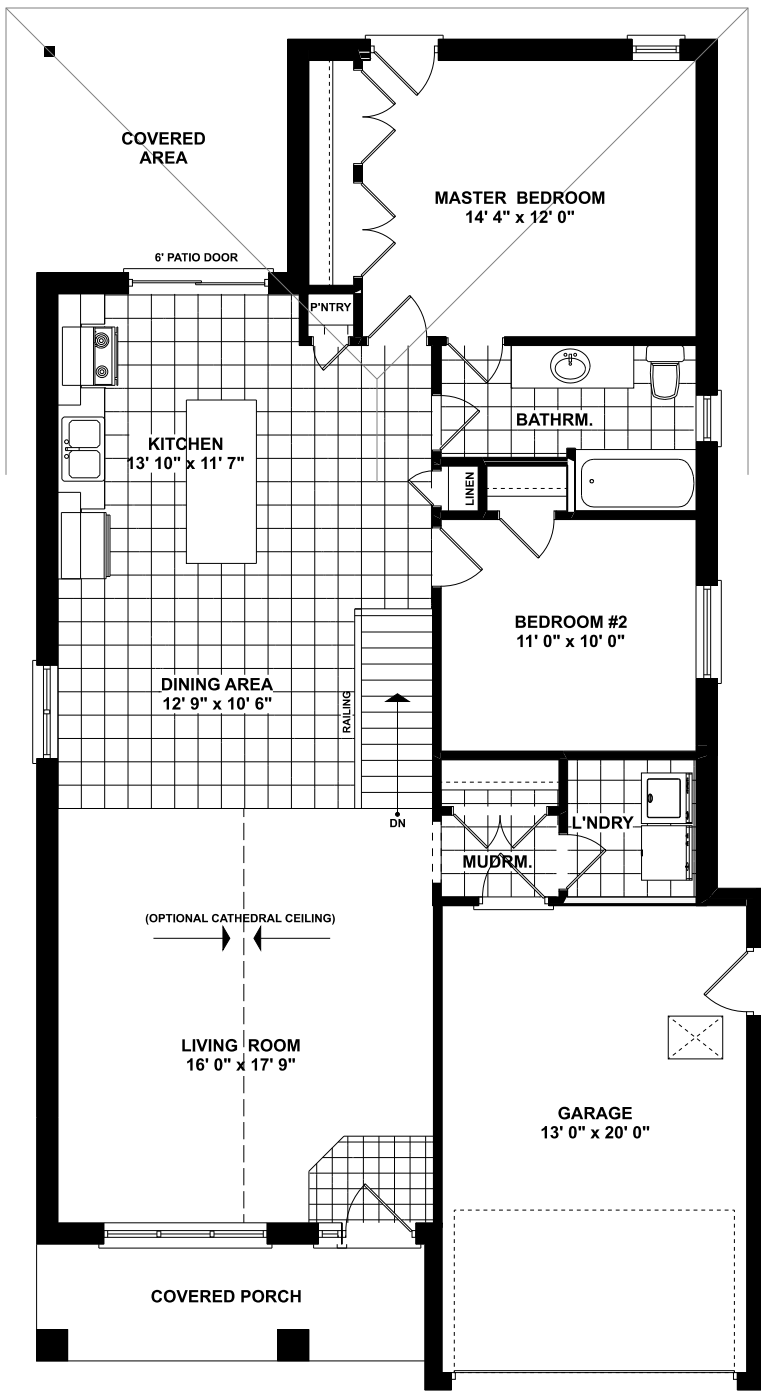
*Quality Homes
At Affordable Prices*

THE WESTPOINT

Approximately 1200 sq. ft. bungalow with garage. Open concept living room, kitchen/dinette leading onto a covered deck. 2 Bedrooms, main floor laundry, and a spacious 4 piece washroom with whirlpool tub.

(519) 633-9642

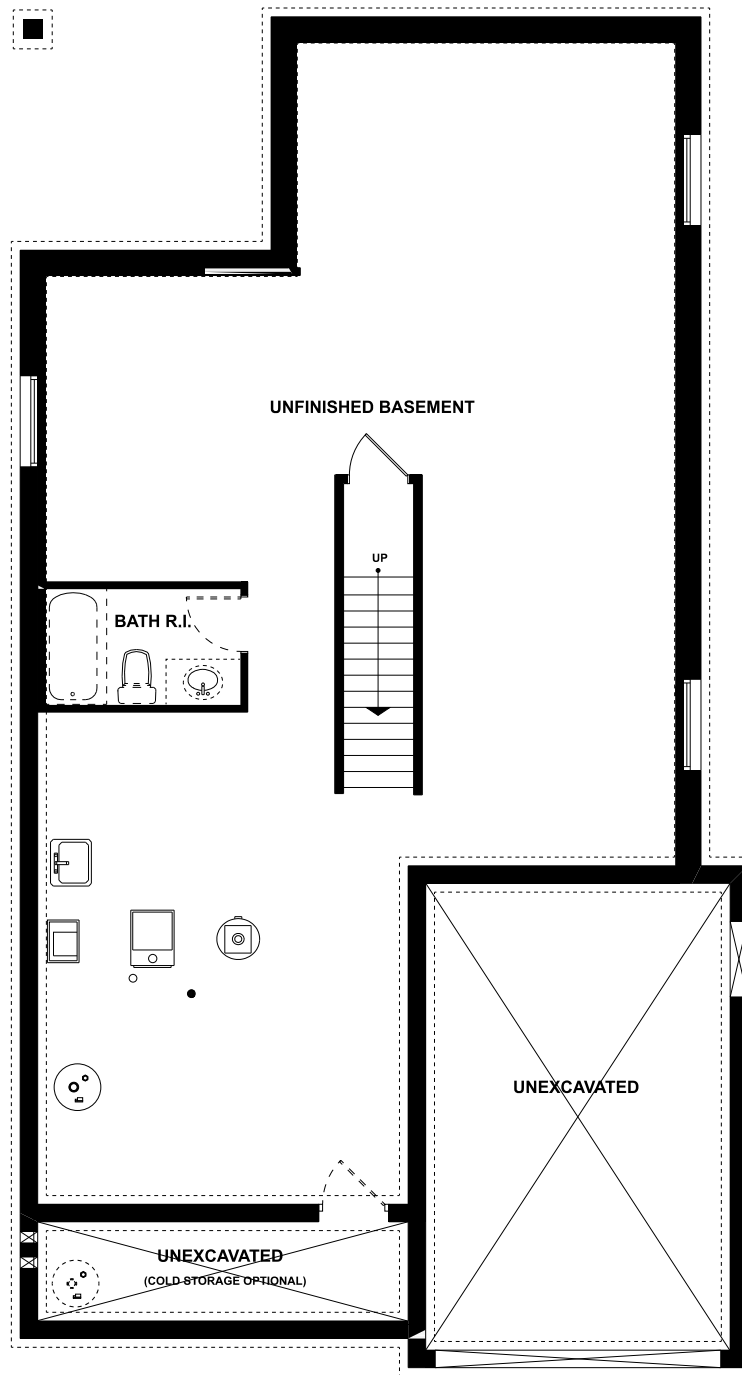
Elevations are artist renderings and may show optional items.



MAIN FLOOR PLAN

1227 SQ. FT.

31' 2" WIDE 57' 11" DEEP



FOUNDATION PLAN

UNFINISHED



*Quality Homes
At Affordable Prices*

Floor plans are artists renderings and may show optional items.