



*Quality Homes
At Affordable Prices*

THE BOTWOOD

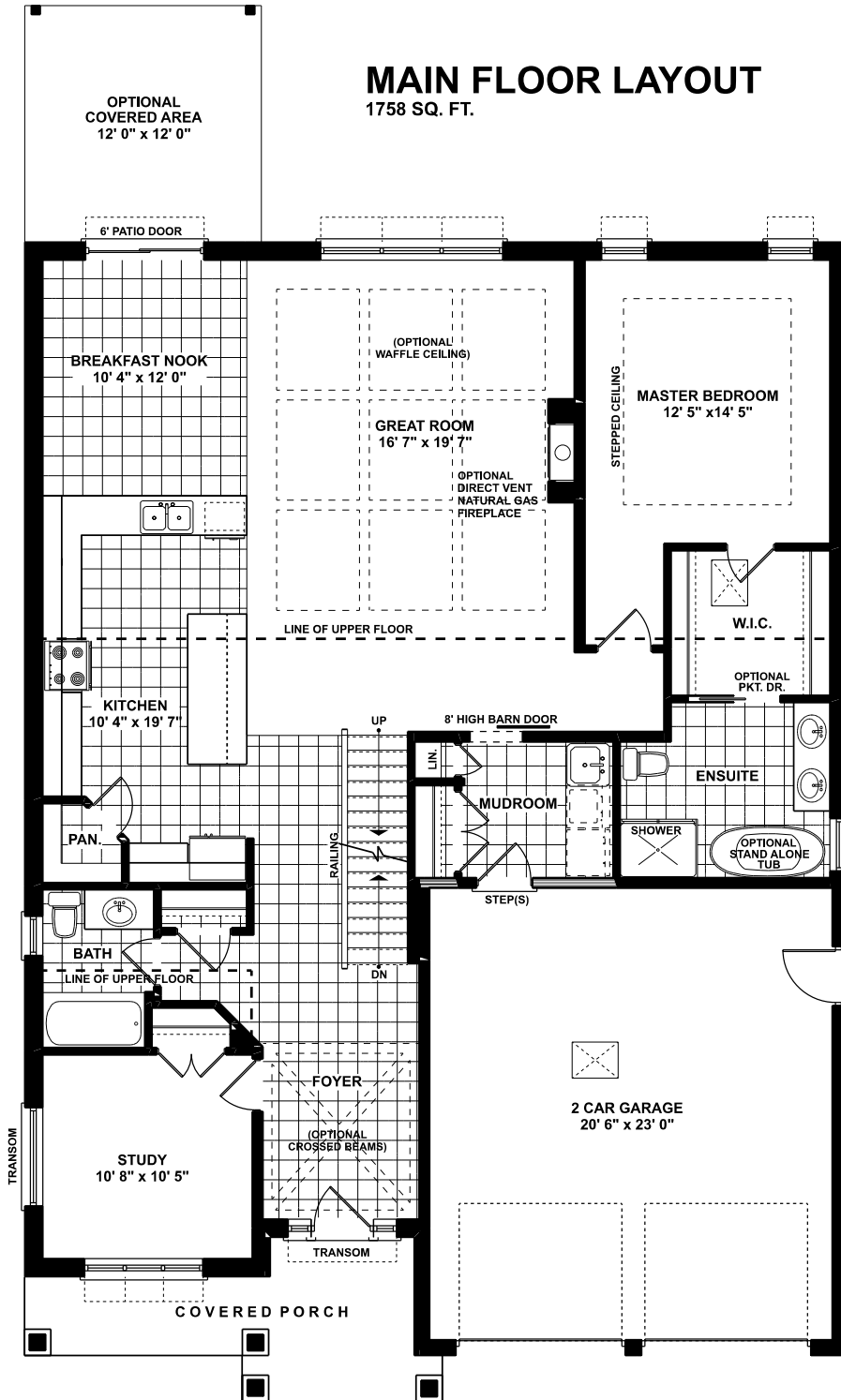
2506 sq. ft. 2 storey open concept kitchen/dining and great room. Main floor with 4 piece washroom, laundry room, study/bedroom and a master bedroom with a walk-in closet and ensuite. 2nd floor has 2 bedrooms and a 4 piece washroom. Optional: waffle ceiling / 9' ceilings / fireplace / crossed beams in foyer, stand alone tub / covered area / optional pocket door

(519) 633-9642

Elevations are artist renderings and may show optional items.

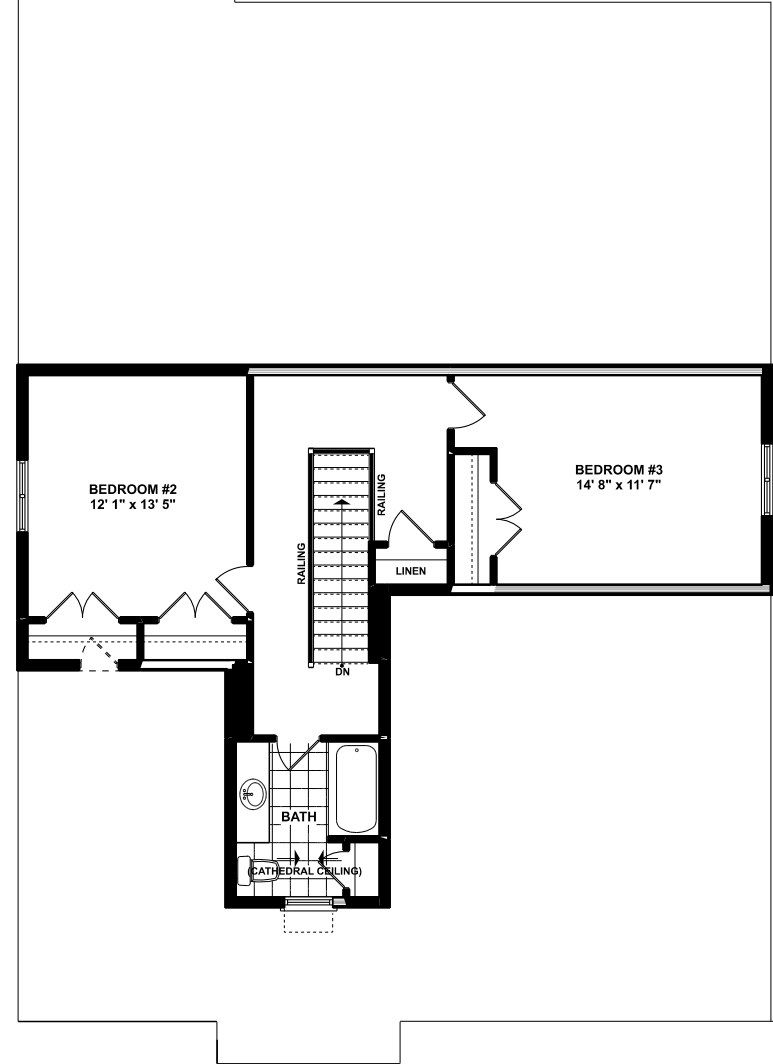
MAIN FLOOR LAYOUT

1758 SQ. FT.



UPPER FLOOR LAYOUT

748 SQ. FT.



Quality Homes
At Affordable Prices

*Floor plans are artists renderings
and may show optional items.*