



**QUICK
POSSESSION
SPEC HOME**



**Collier
Homes**

*Quality Homes
At Affordable*

519-633-9642
www.collierhomes.ca

THE BANNERMAN

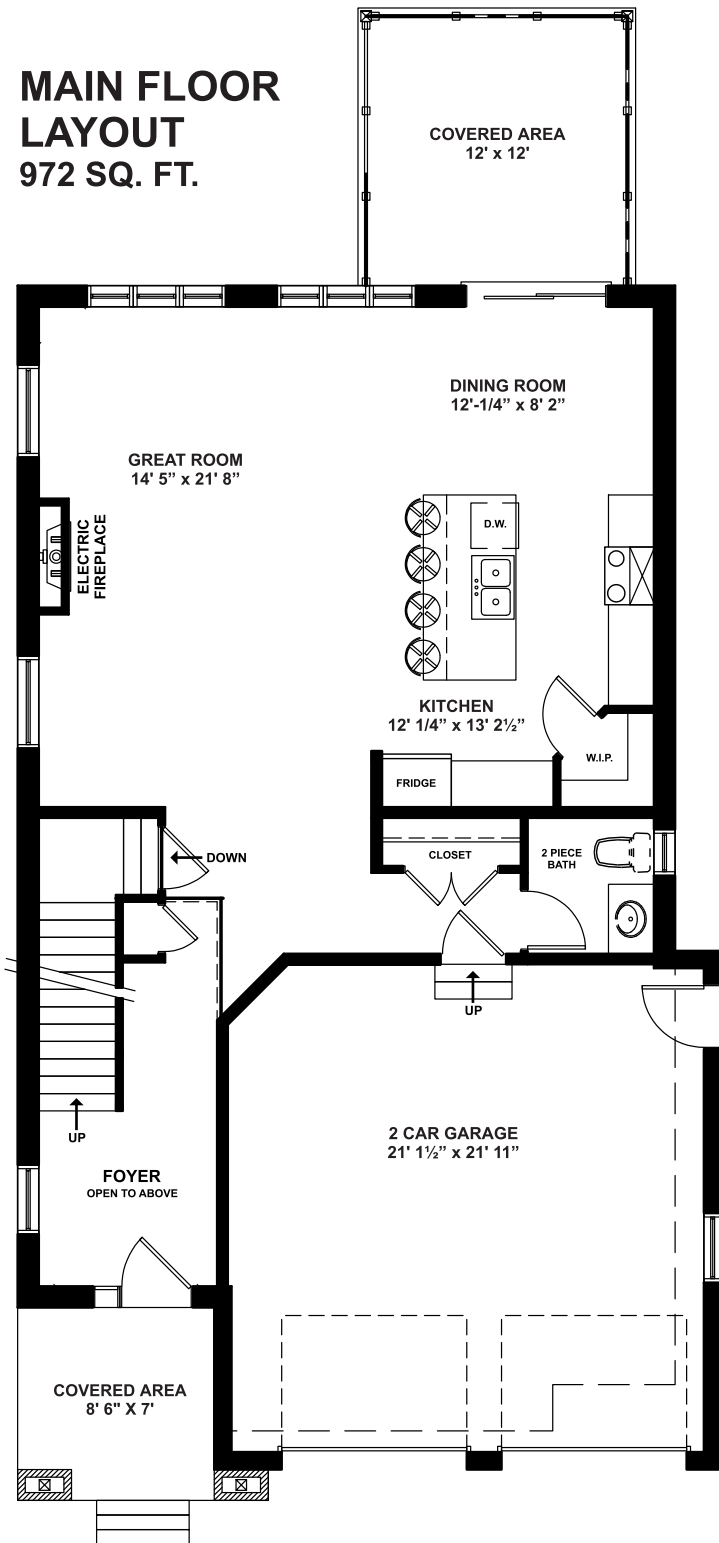
QUICK POSSESSION SPEC HOME

5 Aspen Parkway, Aylmer ON (Cottonwood Subdivision)

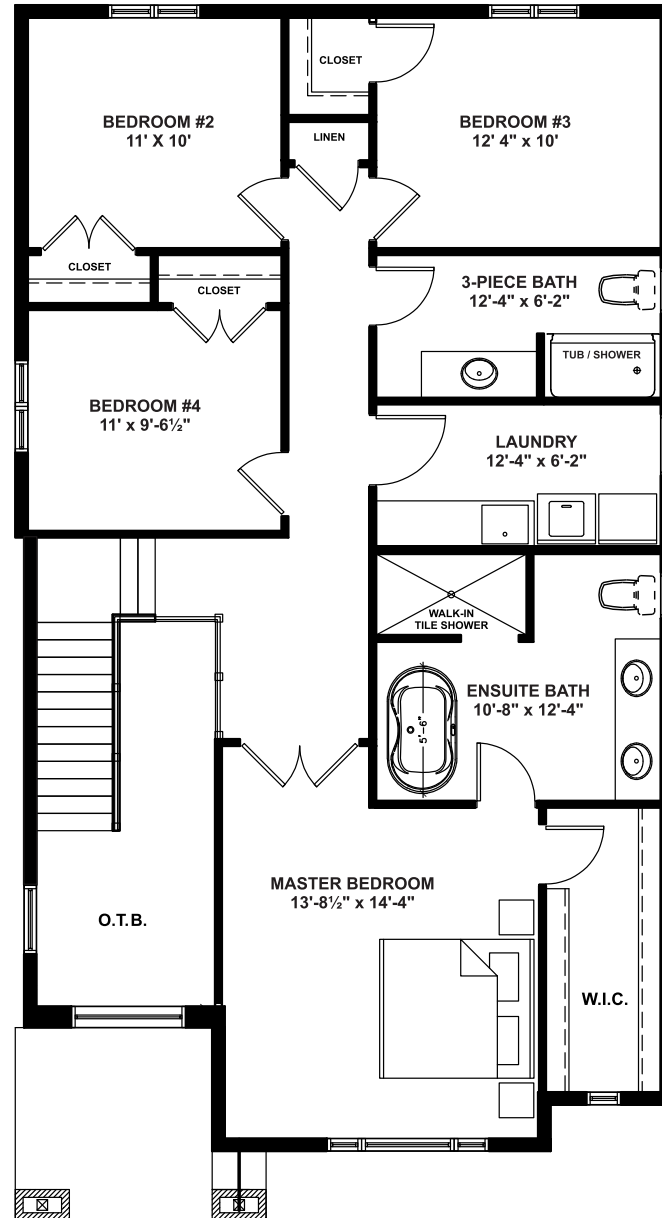
Approximately 2149 sq ft, this two story home contains 4 bedrooms upstairs including a spacious master bedroom with ensuite and W.I.C. 9' ceiling height, open concept main floor with kitchen, dining room and a two car garage.

Elevations are artist renderings and may show optional items.

**MAIN FLOOR
LAYOUT
972 SQ. FT.**



**UPPER FLOOR
LAYOUT
1177 SQ. FT.**

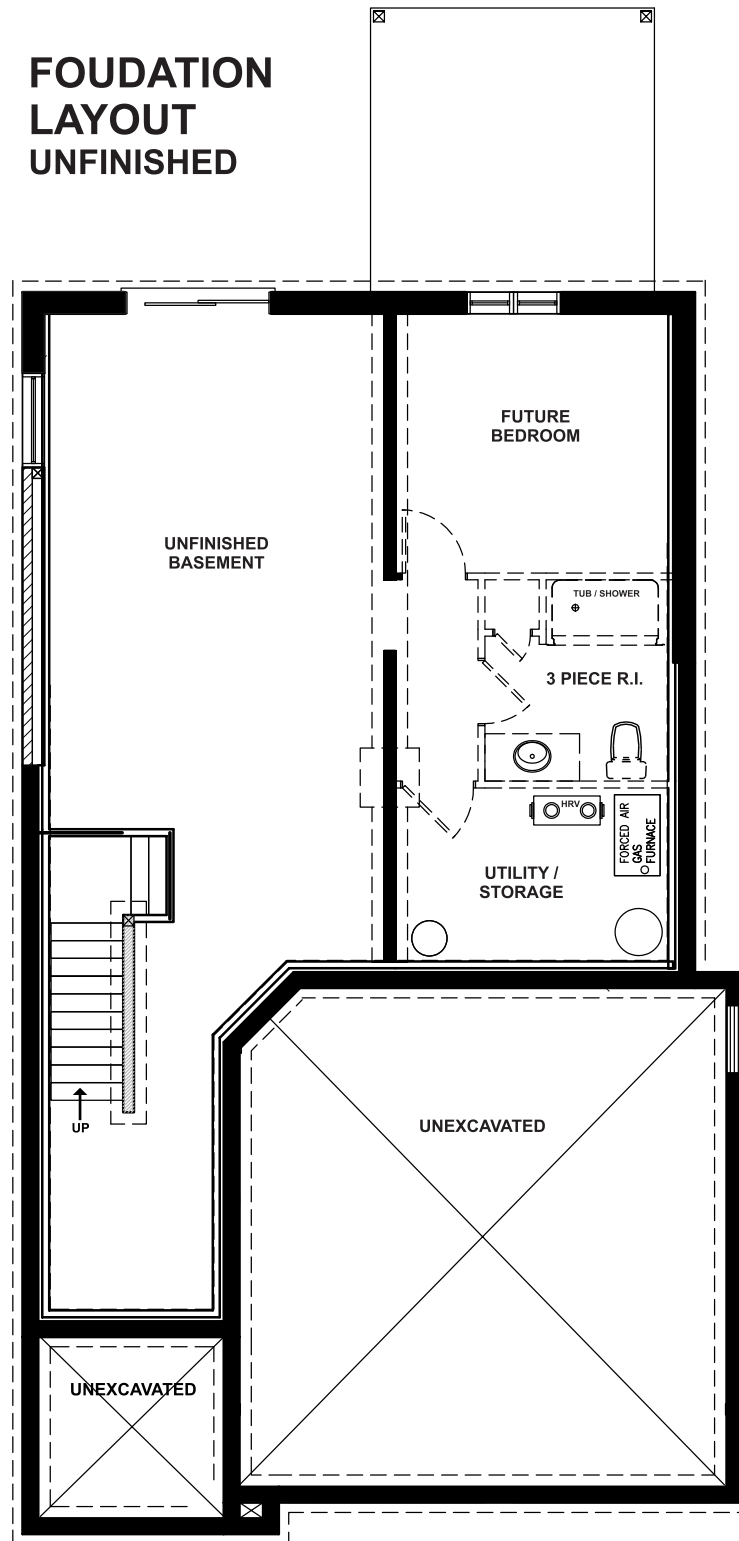


**Collier
Homes**

*Quality Homes
At Affordable Prices*

*Floor plans are artists renderings
and may show optional items.*

**FOUDATION
LAYOUT
UNFINISHED**



**Collier
Homes**

*Quality Homes
At Affordable Prices*

*Floor plans are artists renderings
and may show optional items.*