



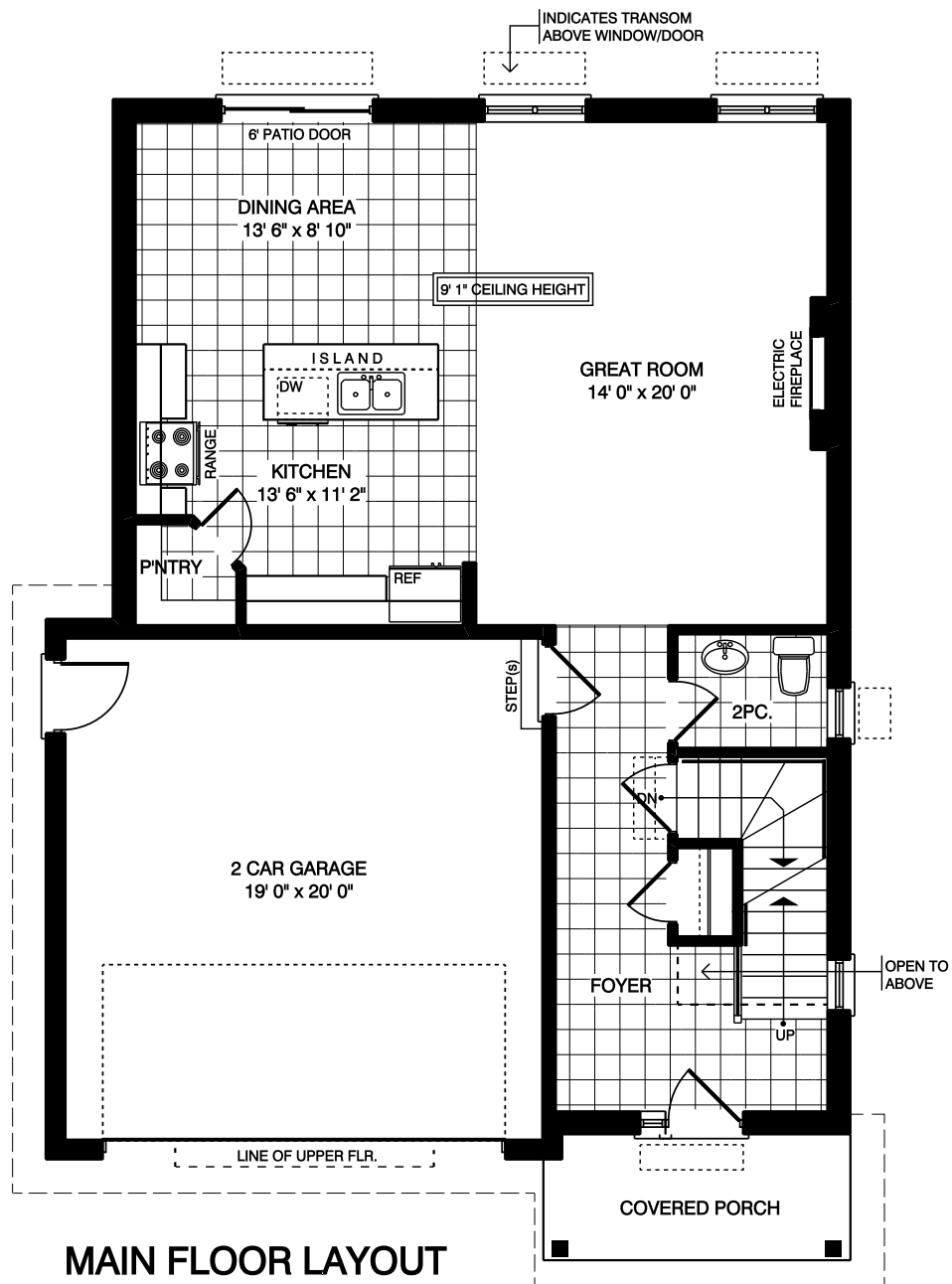
*Quality Homes  
At Affordable Prices*

# THE AVONDALE

Approximately 1728 sq. ft. two storey with a two car garage. 1st Floor has a 2-piece washroom, open concept kitchen, dining and great room. 2nd Floor contains laundry room, 3 bedrooms and 4-piece washroom. Master bedroom has a walk in closet and 3-piece ensuite.

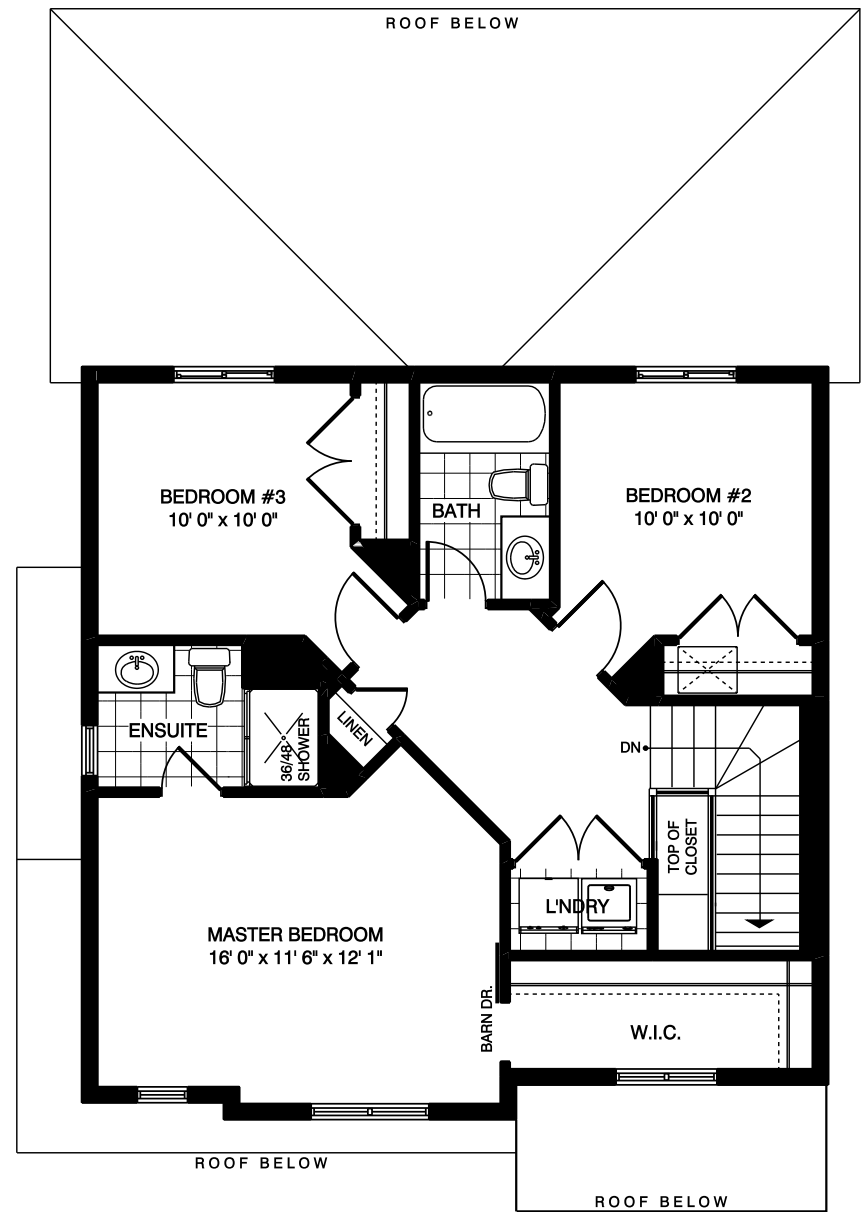
(519) 633-9642

Elevations are artist renderings and may show optional items.



## MAIN FLOOR LAYOUT

871 SQ. FT.  
32' 0" WIDE 46' 2" DEEP



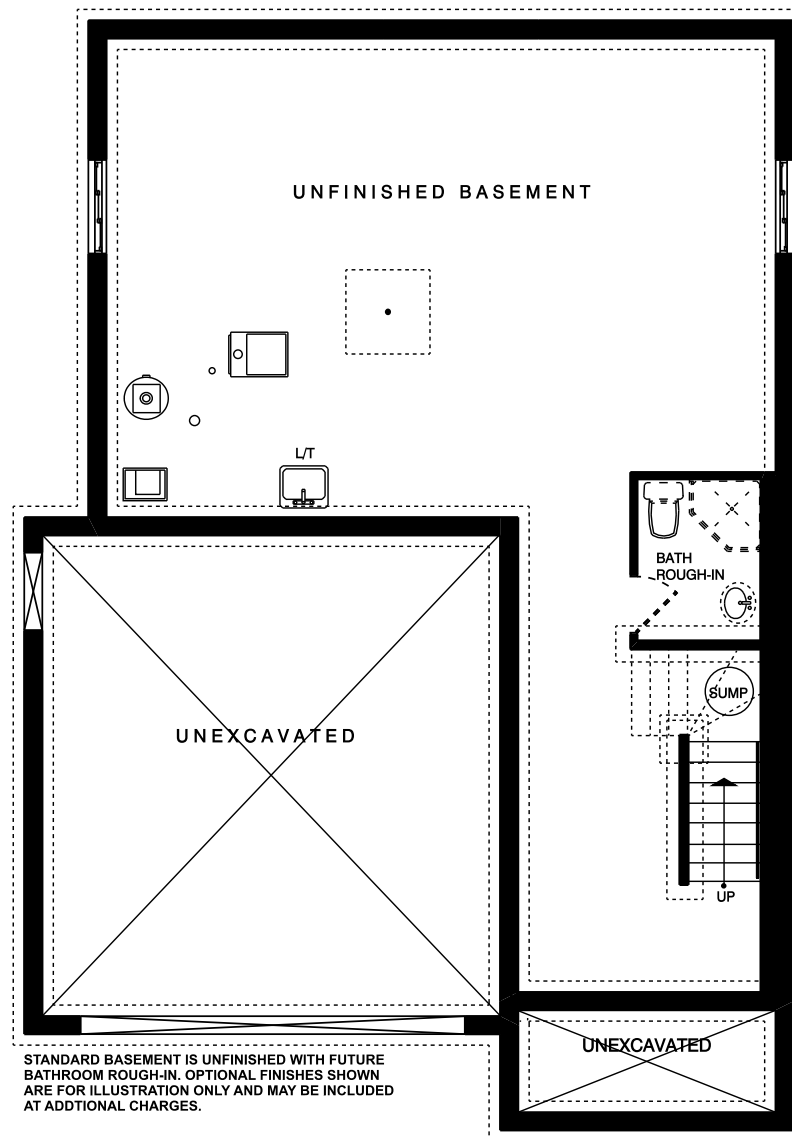
## UPPER FLOOR LAYOUT

857 SQ. FT.



*Quality Homes  
At Affordable Prices*

Floor plans are artists renderings  
and may show optional items.



**FOUNDATION LAYOUT**  
(UNFINISHED)



*Quality Homes  
At Affordable Prices*  
Floor plans are artists renderings  
and may show optional items.