



**Collier
Homes**
INC.

*Quality Homes
At Affordable
Prices*

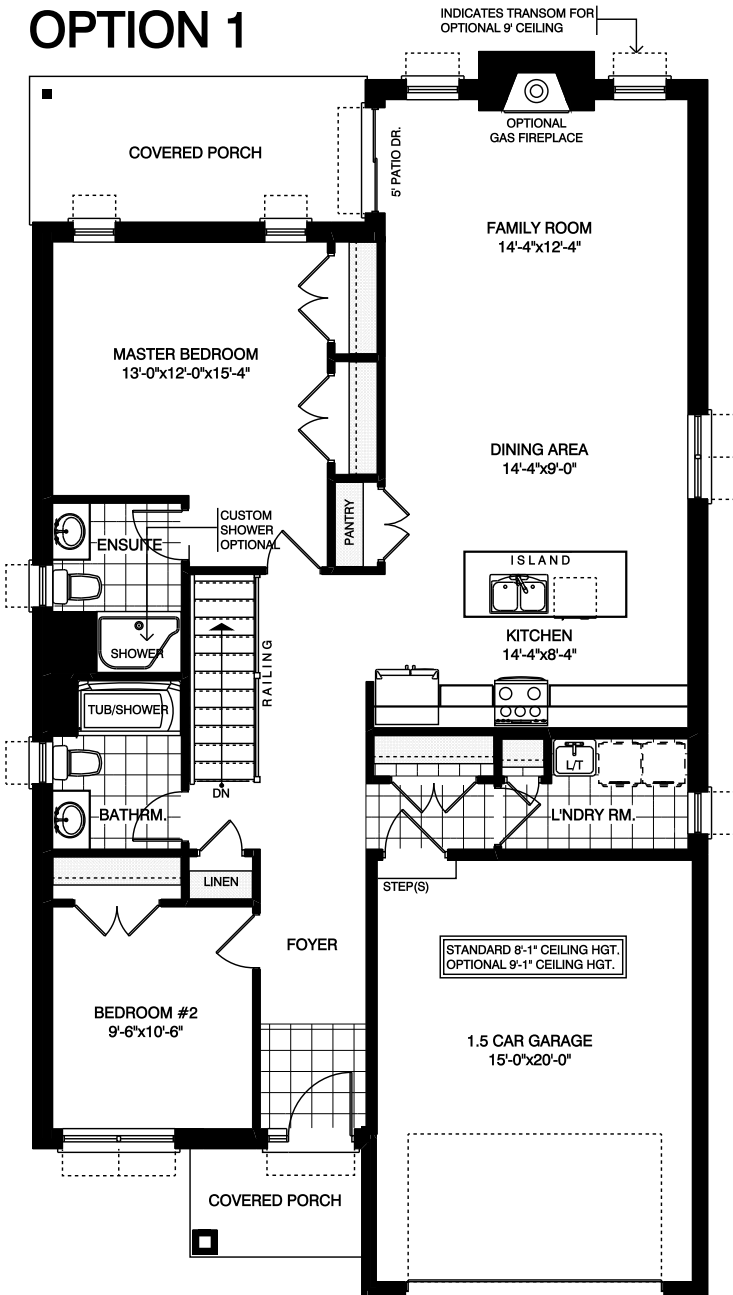
THE AVALON

Approximately 1300 sq ft, two bedroom bungalow with your choice of ensuite layout. Open concept kitchen, dining and living area leading onto a covered porch. Lots of closet space, main floor laundry and a spacious 1.5 car garage.

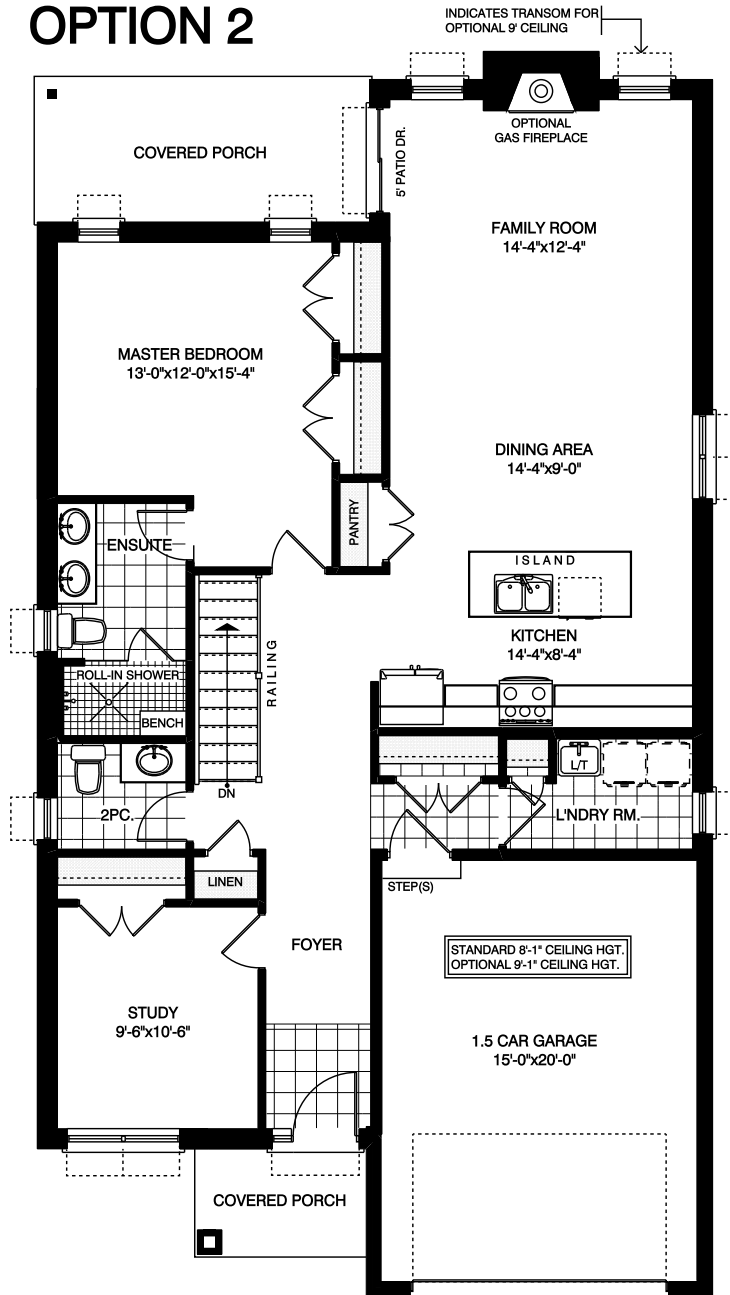
(519) 633-9642

Elevations are artist renderings and may show optional items.

OPTION 1



OPTION 2

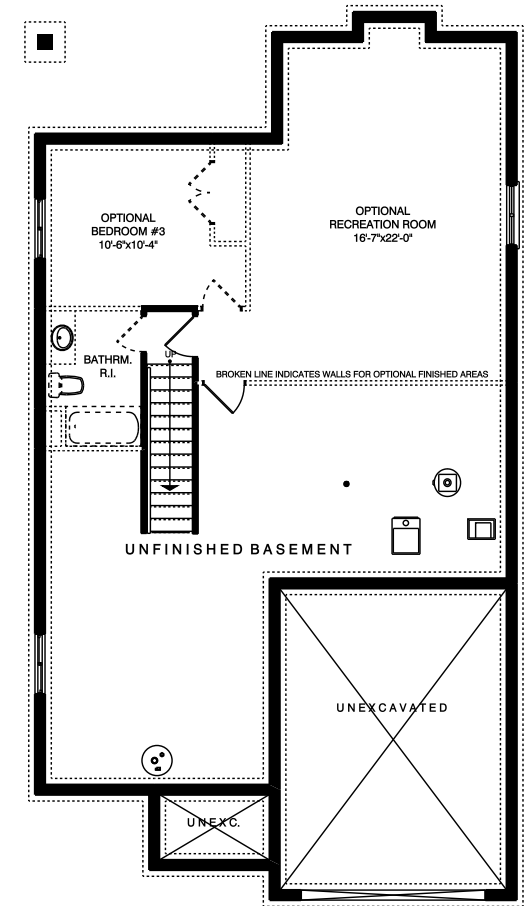


MAIN FLOOR LAYOUT

1300 SQ. FT.
32'-0\"/>

MAIN FLOOR LAYOUT

1300 SQ. FT.
32'-0\"/>



FOUNDATION LAYOUT

606 SQ. FT. OPTIONAL FINISHED AREA



*Quality Homes
At Affordable Prices*

Floor plans are artists renderings and may show optional items.