



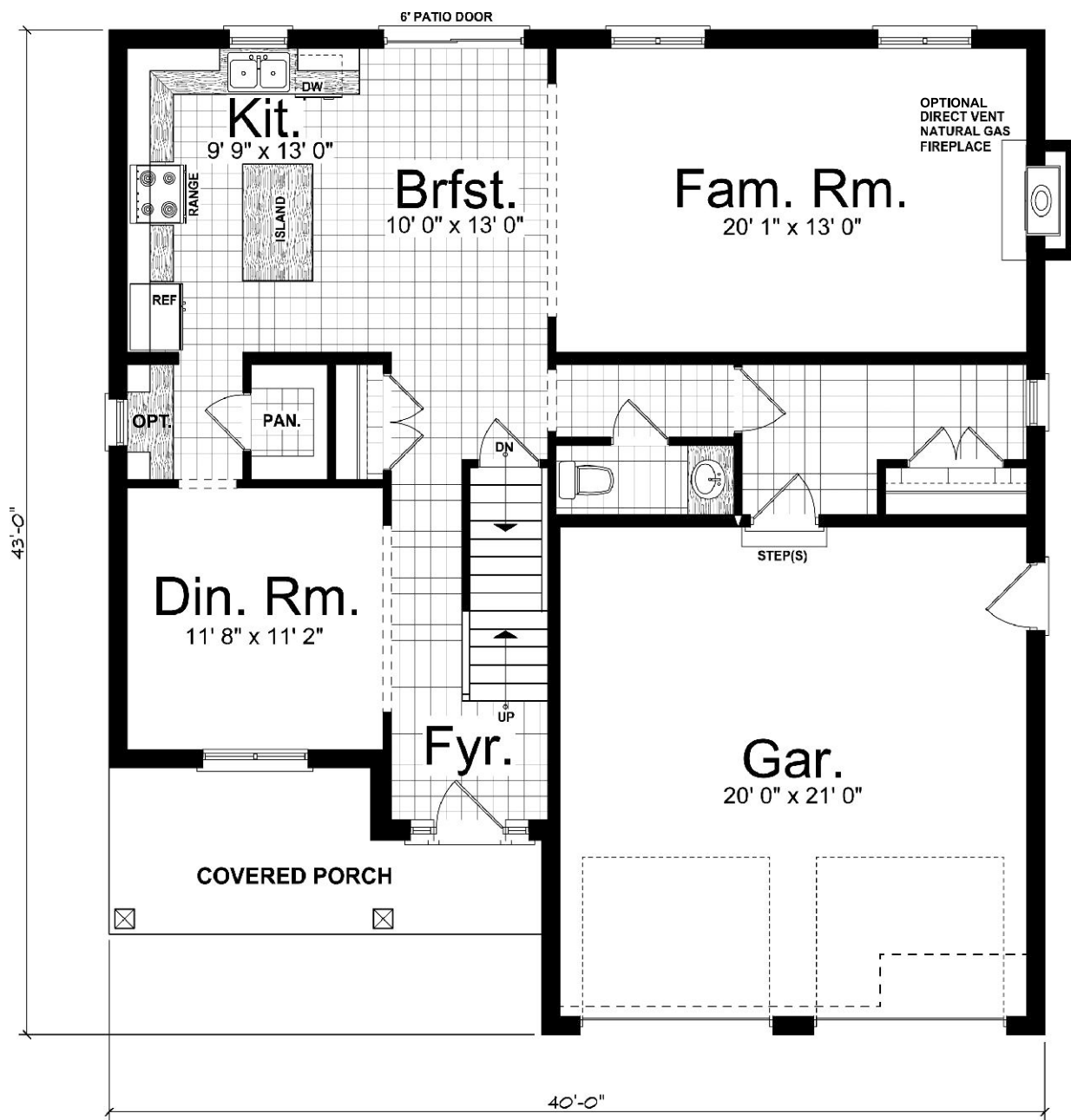
*Quality Homes
At Affordable
Prices*

THE GANDER I

Approximately 2559 sq. ft two storey with a two car garage. 1st floor has a 2-piece washroom, Open concept kitchen and family room leading into a dining room. 2nd floor consists of a laundry room, 4 large bedrooms and a 4-piece washroom. Master bedroom has a 4 piece washroom with a walk in closet. Optional fireplace / 9' ceilings.

(519) 633-9642

Elevations are artist renderings and may show optional items.



MAIN FLOOR LAYOUT

Floor plans are artists renderings and may show optional items.



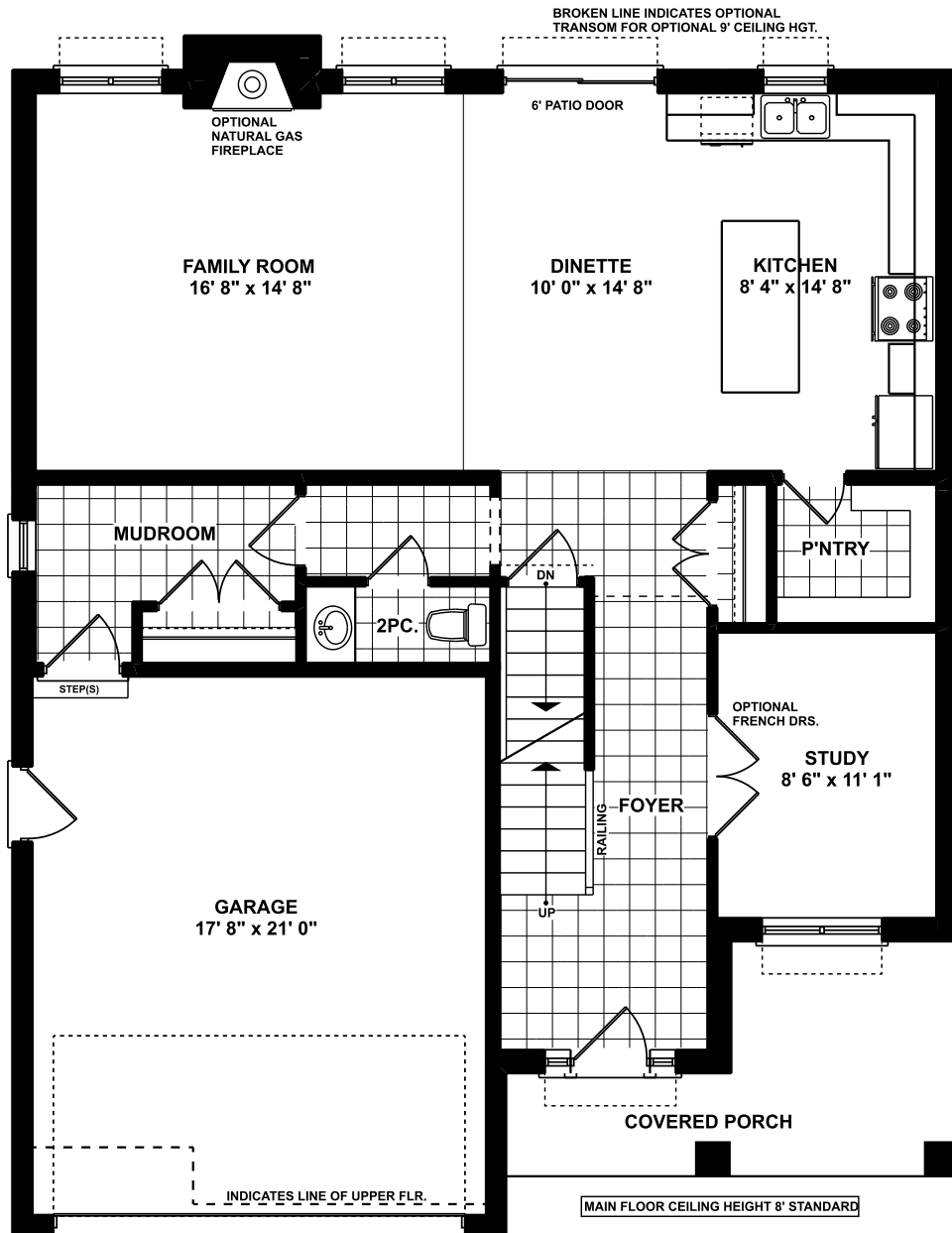
*Quality Homes
At Affordable
Prices*

THE GANDER II

Approximately 2559 sq. ft two storey with a two car garage. 1st floor has a 2-piece washroom, Open concept kitchen and family room leading into a dining room. 2nd floor consists of a laundry room, 4 large bedrooms and a 4-piece washroom. Master bedroom has a 4 piece washroom with a walk in closet. Optional fireplace / 9' ceilings.

(519) 633-9642

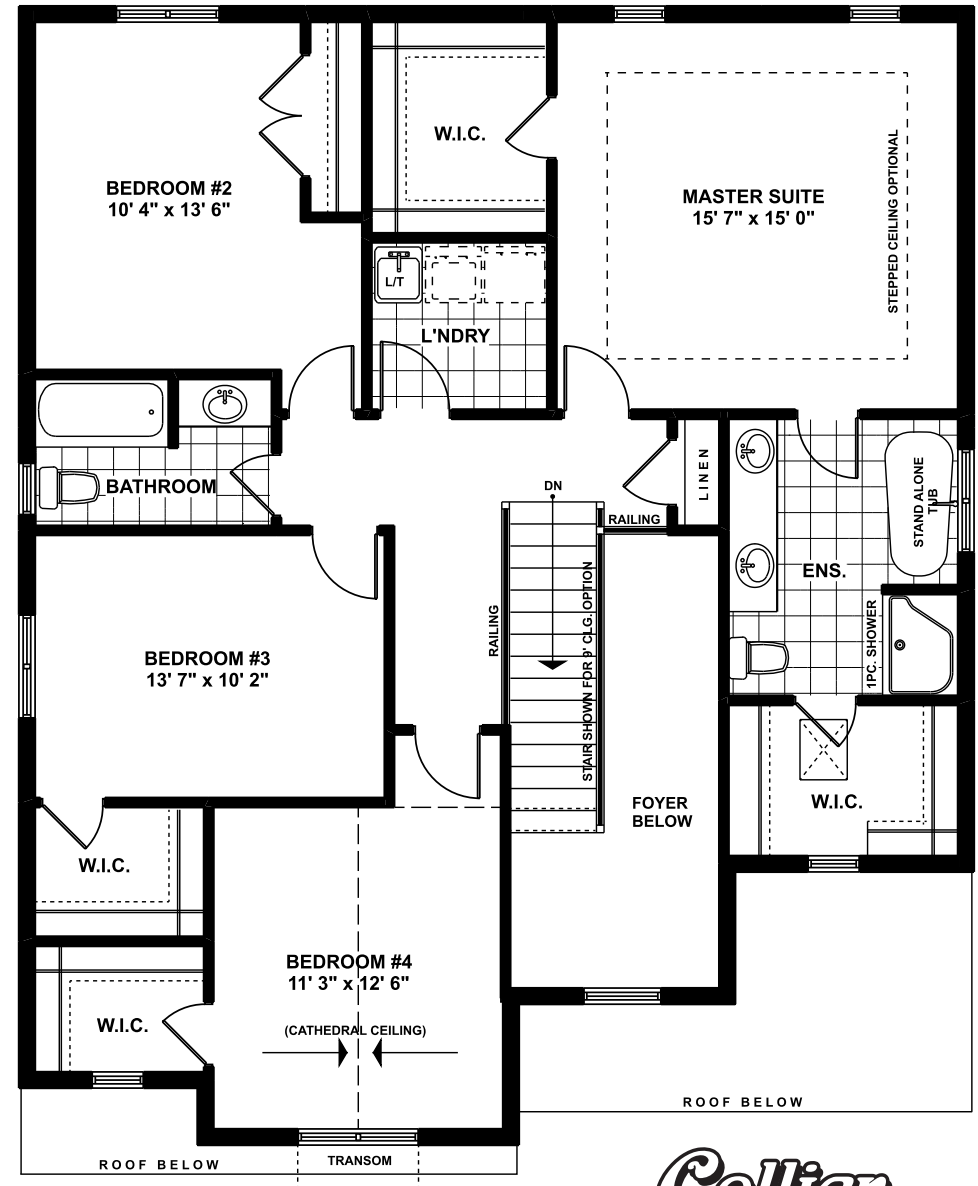
Elevations are artist renderings and may show optional items.



MAIN FLOOR LAYOUT

1100 SQ. FT.

36' 10" WIDE 45' 3" DEEP



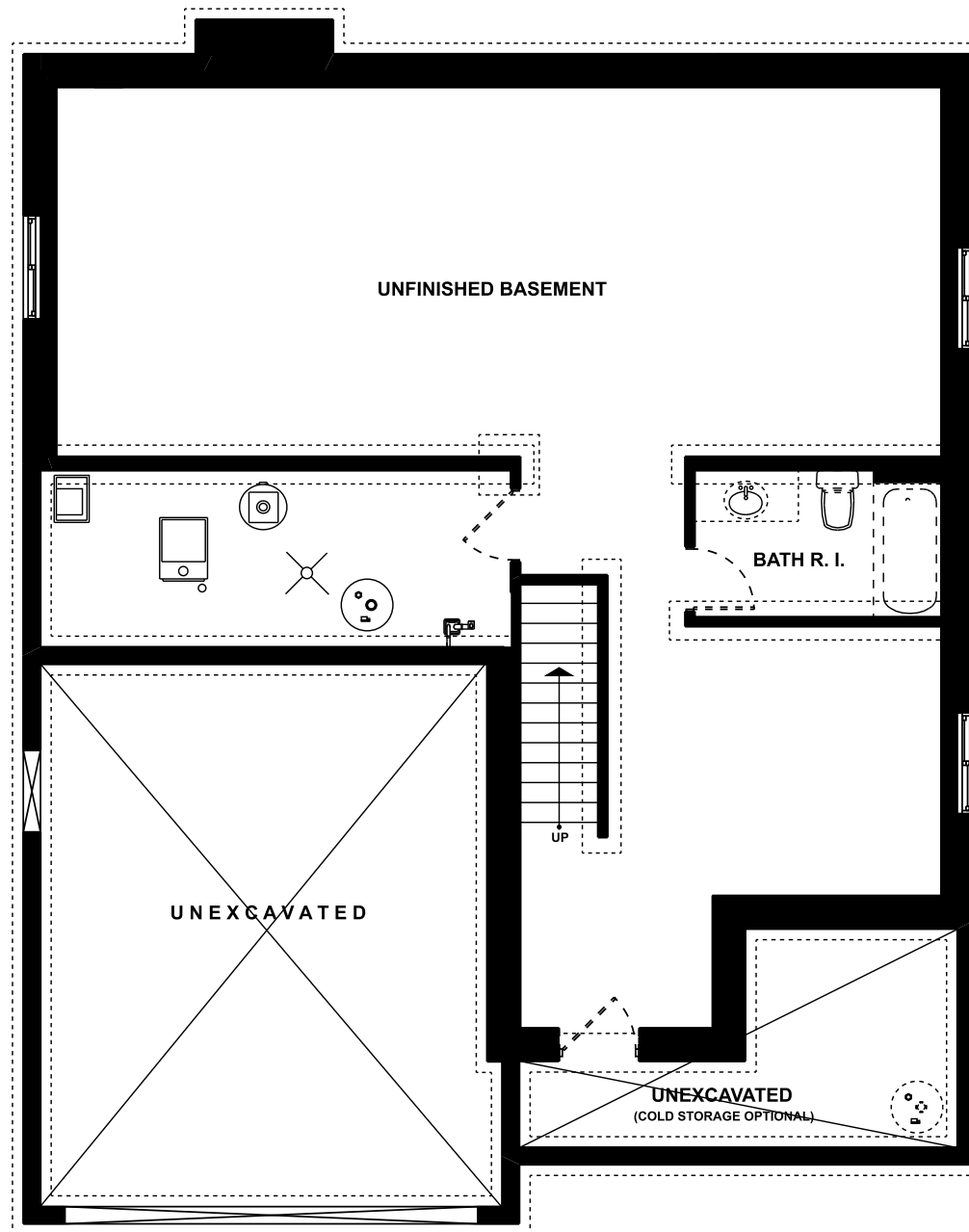
UPPER FLOOR LAYOUT

1468 SQ. FT.



*Quality Homes
At Affordable Prices*

Floor plans are artists renderings
and may show optional items.



FOUNDATION LAYOUT
UNFINISHED



*Quality Homes
At Affordable Prices*

Floor plans are artists renderings
and may show optional items.