



**Collier
Homes**

*Quality Homes
At Affordable Prices*

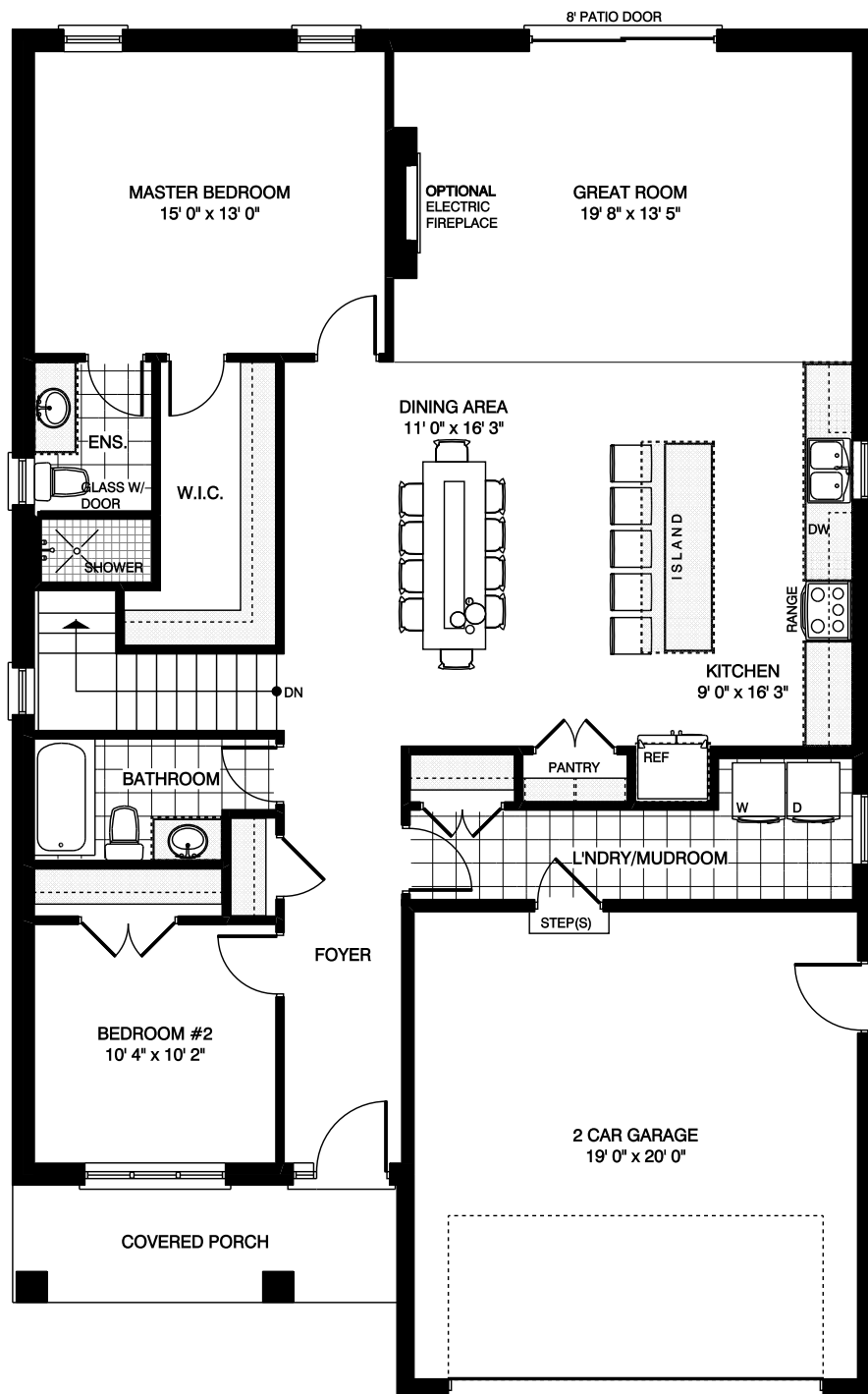
519-633-9642
www.collierhomes.ca

THE PARKWAY

Approximately 1588 sq. ft. bungalow with 2 car garage. Open concept kitchen, dining, and great room. 2 Bedrooms, 2 washrooms, and main floor laundry. Optional electric fireplace.

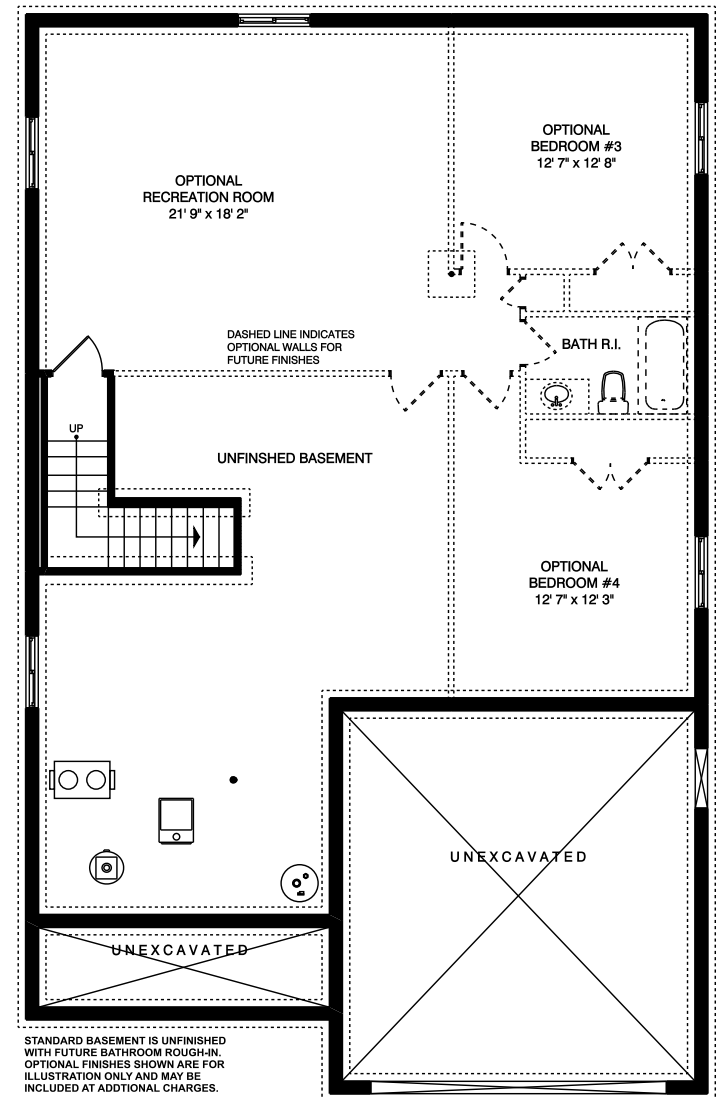
(519) 633-9642

Elevations are artist renderings and may show optional items.



MAIN FLOOR LAYOUT

1588 SQ. FT.
36' 10" WIDE 58' 4" DEEP



FOUNDATION LAYOUT

903 SQ. FT. OPTIONAL FINISHED AREA

**Collier
Homes**

*Quality Homes
At Affordable Prices*

Floor plans are artists renderings and may show optional items.