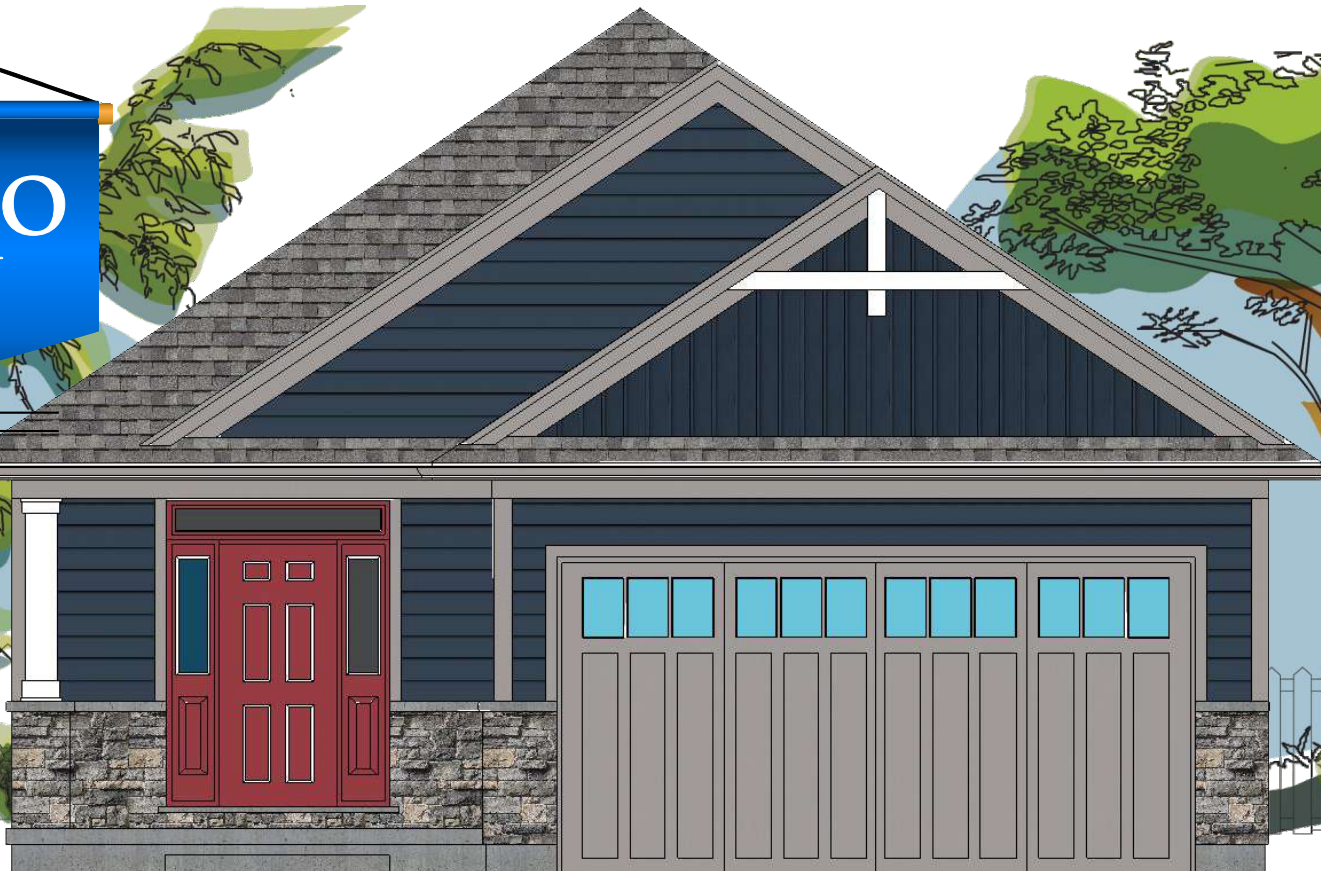




CONDO  
PLAN



**Collier  
Homes**

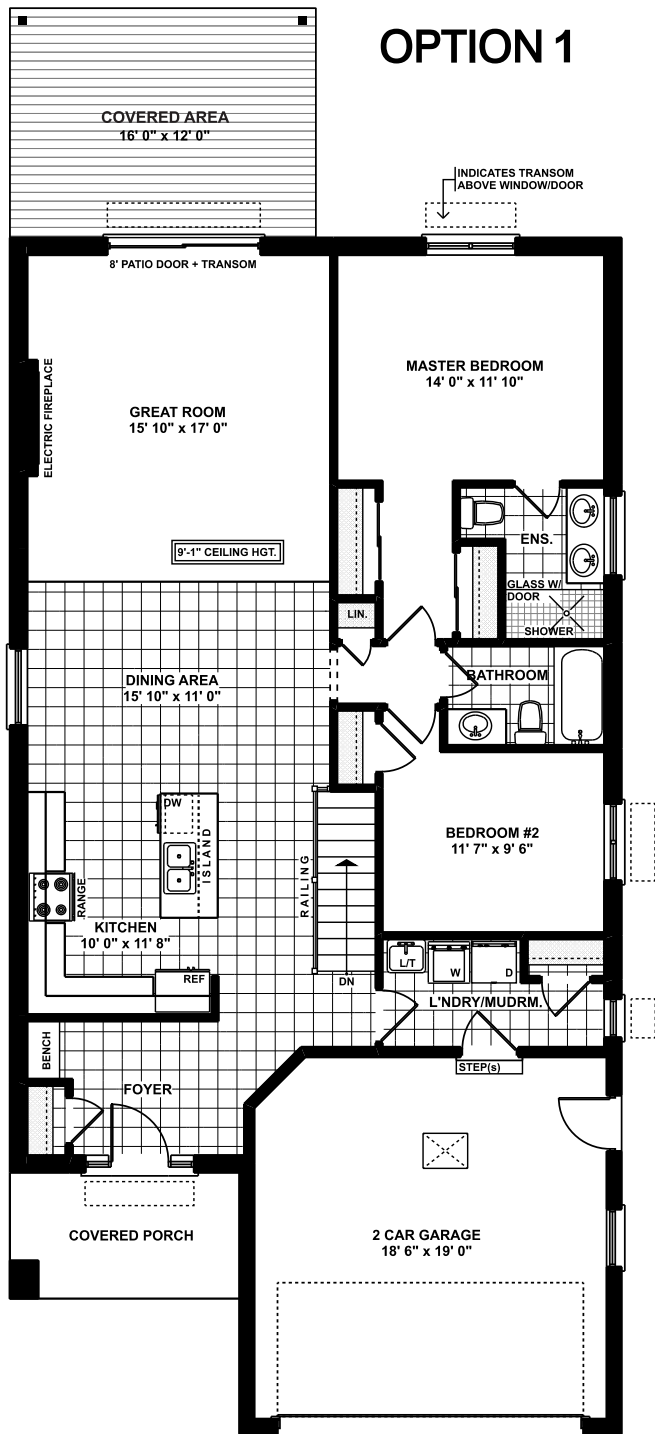
*Quality Homes  
At Affordable Prices*

**519-633-9642**  
[www.collierhomes.ca](http://www.collierhomes.ca)

# THE SEABREEZE

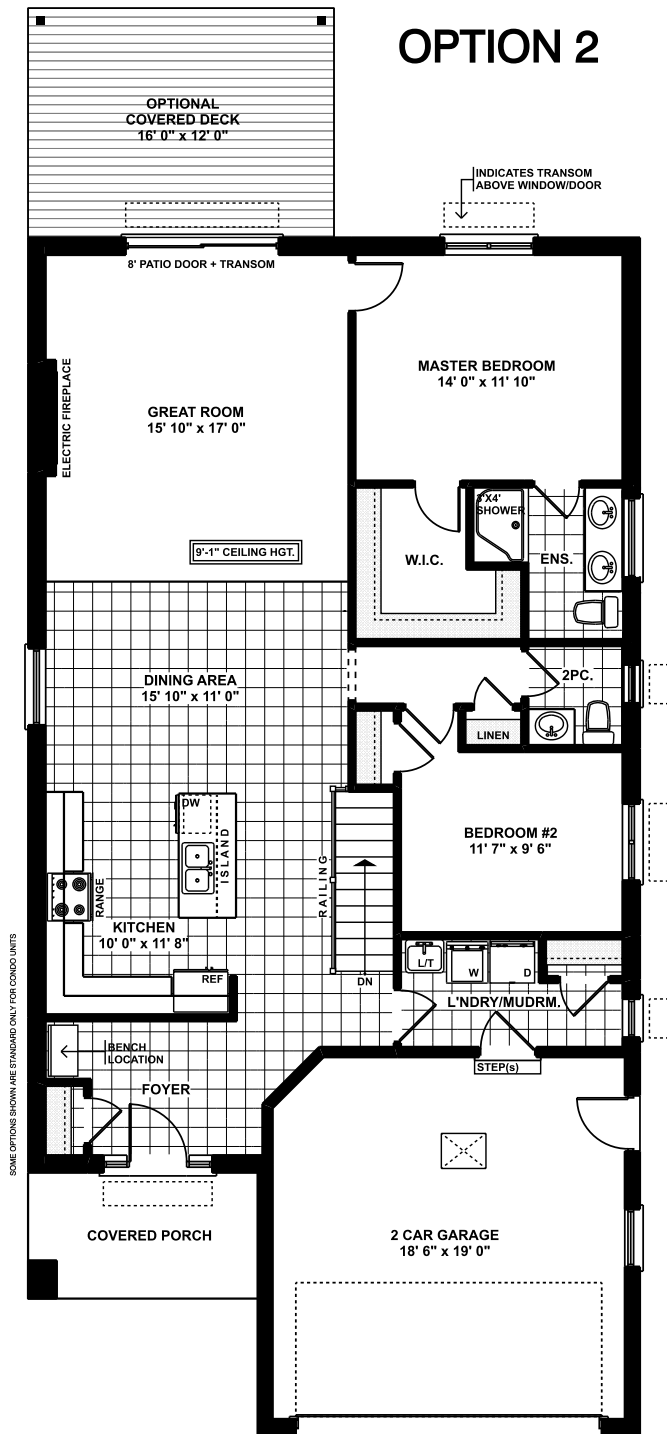
Approximately 1453 sq. ft. bungalow with a two car garage. Nine ft. ceilings and transom windows make up this open concept living room, kitchen and dinette. Main floor consists of two bedrooms, laundry, four piece main and three piece ensuite. Electric fireplace. Custom showers.

Elevations are artist renderings and may show optional items.



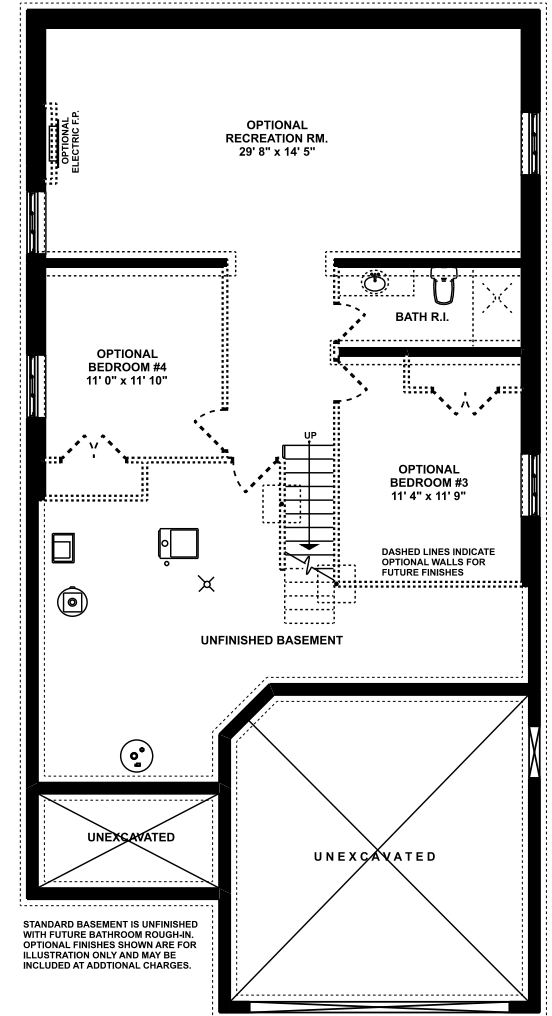
### MAIN FLOOR LAYOUT

1453 SQ. FT.  
32' 0" WIDE 62' 7" DEEP



### MAIN FLOOR LAYOUT

1453 SQ. FT.  
32' 0" WIDE 62' 7" DEEP



**FOUNDATION LAYOUT**  
942 SQ. FT. OPTIONAL FINISHED

**Collier  
Homes**

*Quality Homes  
At Affordable Prices*

*Floor plans are artists renderings  
and may show optional items.*