

**Collier
Homes** 

*Quality Homes
At Affordable Prices*

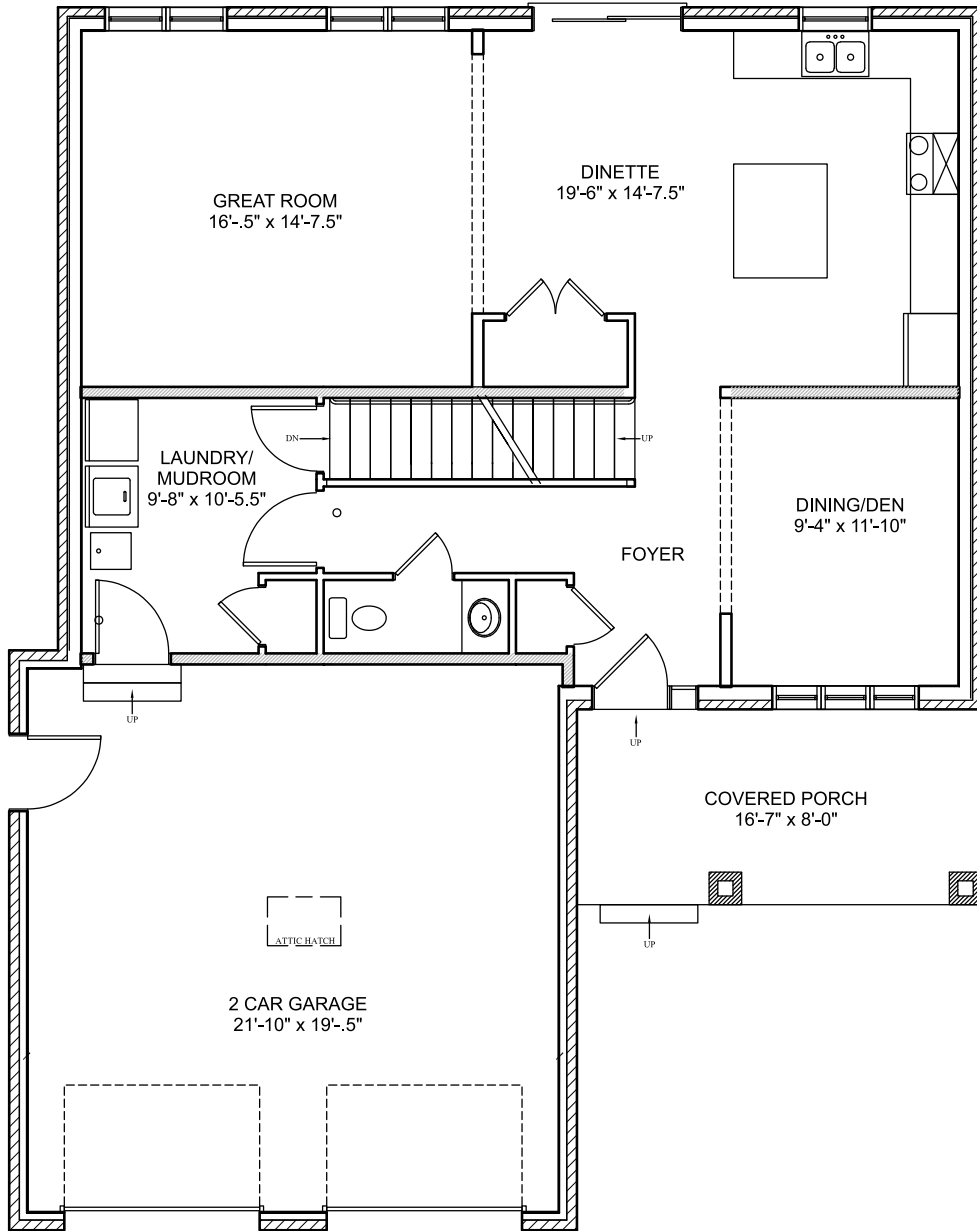
519-633-9642
www.collierhomes.ca

NEWCASTLE

This 2062 sq. ft. 2 storey home has main floor laundry, 2 piece washroom, an open great room into the dinette/kitchen with a dining room, all on the first floor.

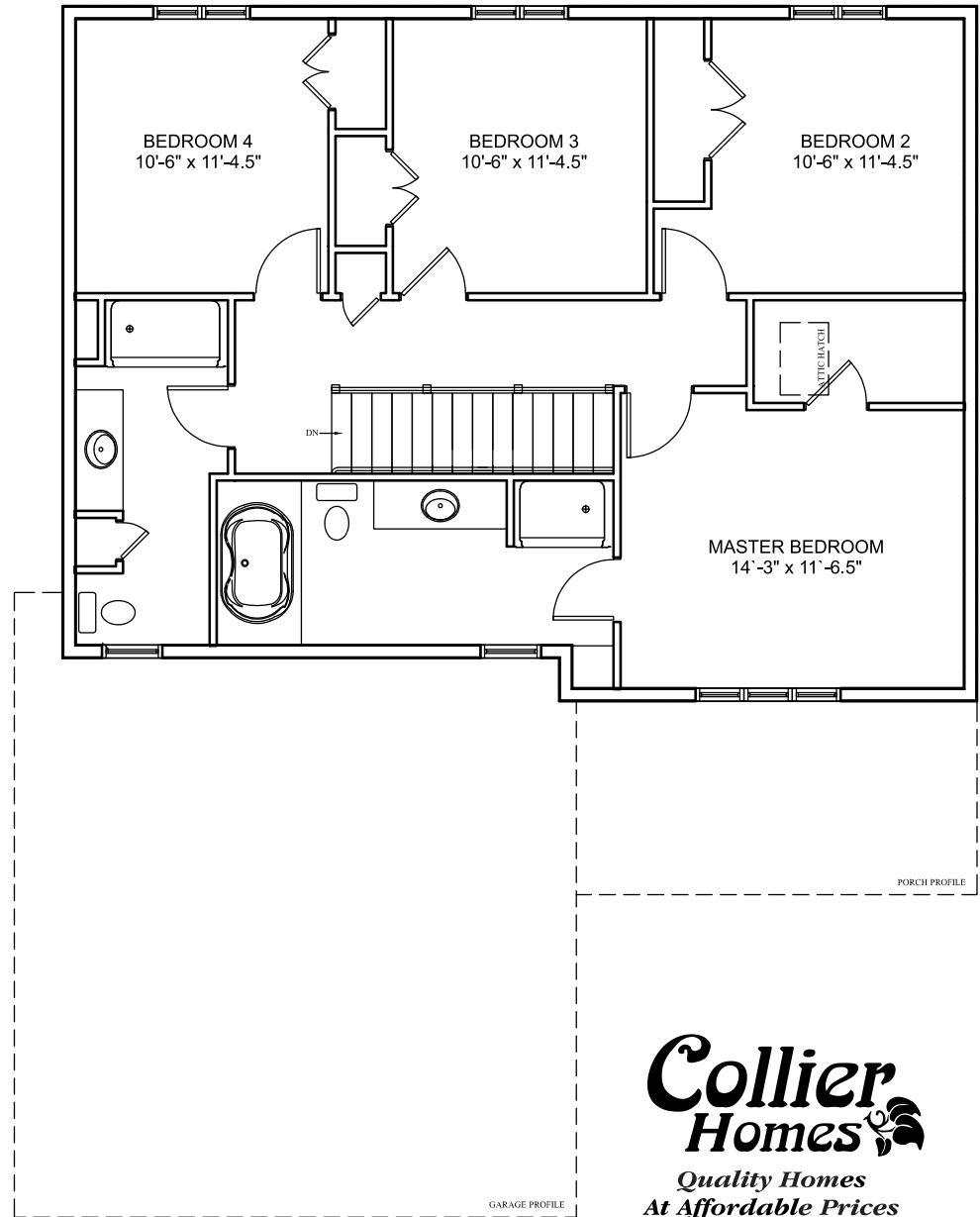
2nd Floor accommodates 4 bedrooms with a 4 piece washroom. Master bedroom has walk-in closet, and ensuite with a 5' shower and Jacuzzi tub.

Elevations are artist renderings and may show optional items.



MAIN FLOOR PLAN

36'- 10" Wide x 46'(+/-) Deep Scale 3/16"-1'-0"

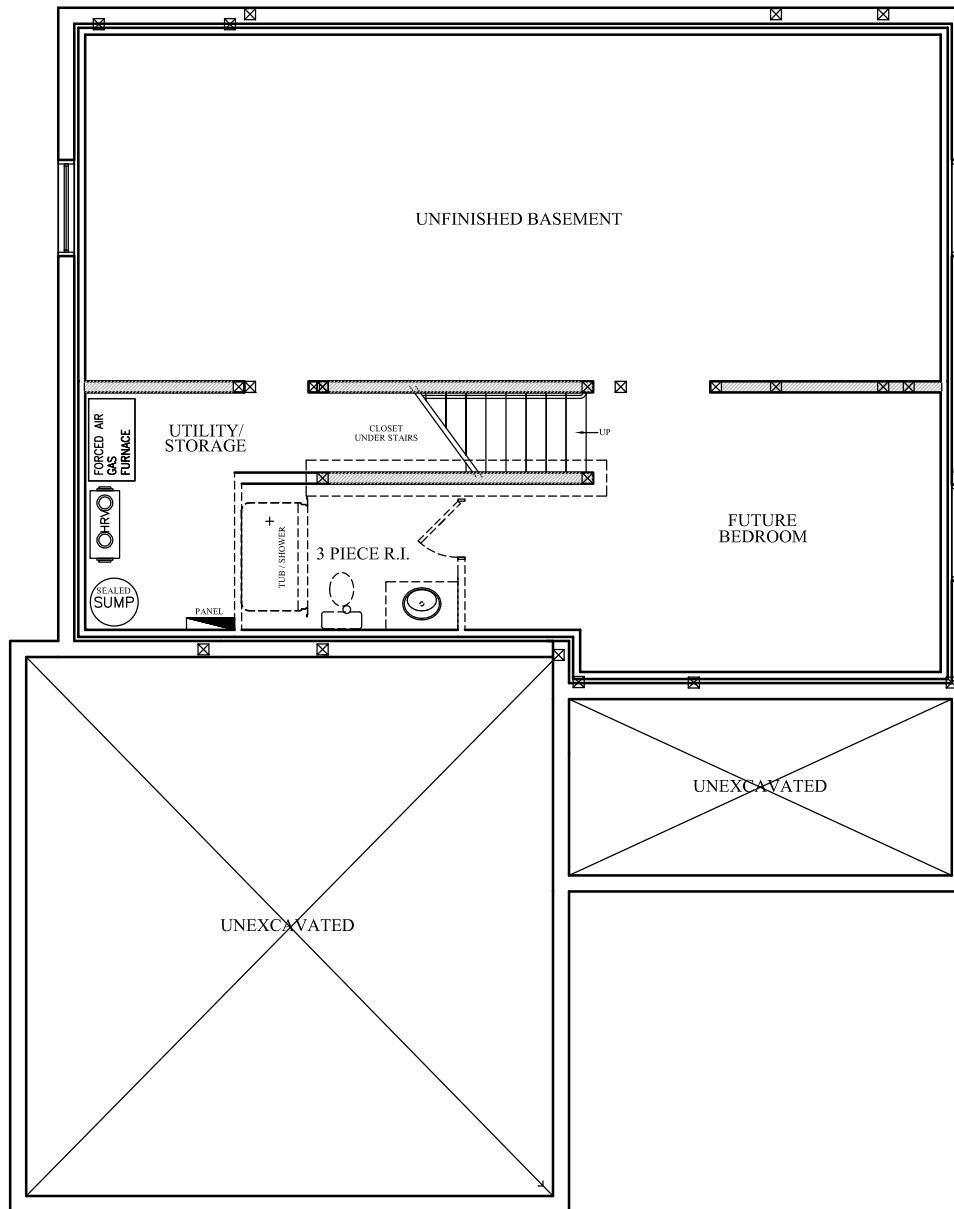


UPPER FLOOR PLAN

Scale 3/16"-1'-0"

**Collier
Homes**
Quality Homes
At Affordable Prices

*Floor plans are
artists renderings
and may show
optional items.*



FOUNDATION PLAN

Scale 3/16"-1'-0"

**Collier
Homes**
Quality Homes
At Affordable Prices

*Floor plans are
artists renderings
and may show
optional items.*