



QUICK
POSSESSION
SPEC
HOME



**Collier
Homes**

*Quality Homes
At Affordable Prices*

519-633-9642
www.collierhomes.ca

THE BANNERMAN

QUICK POSSESSION SPEC HOME

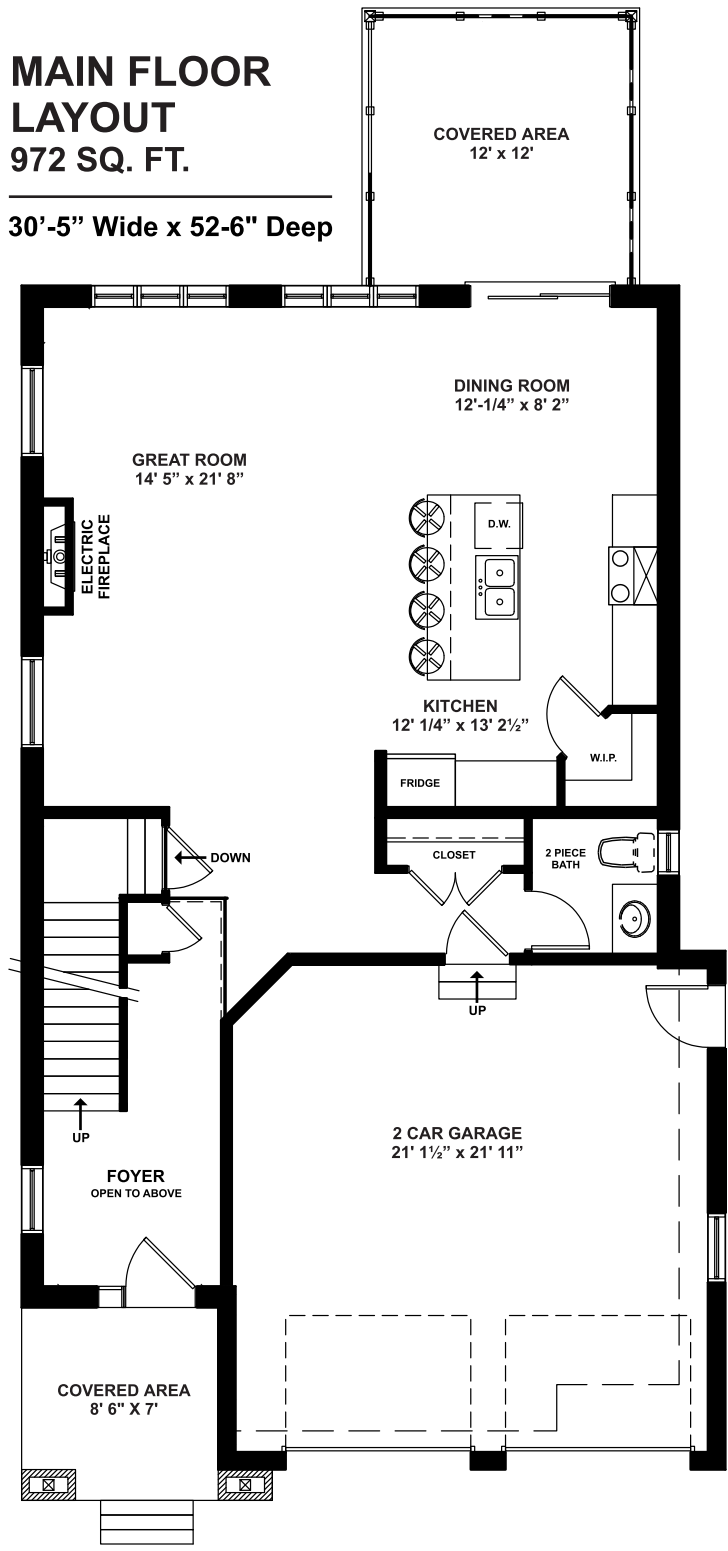
5 Aspen Parkway, Aylmer ON (Cottonwood Subdivision)

Approximately 2149 sq ft, this two story home contains 4 bedrooms upstairs including a spacious master bedroom with ensuite and W.I.C. 9' ceiling height, open concept main floor with kitchen, dining room and a two car garage.

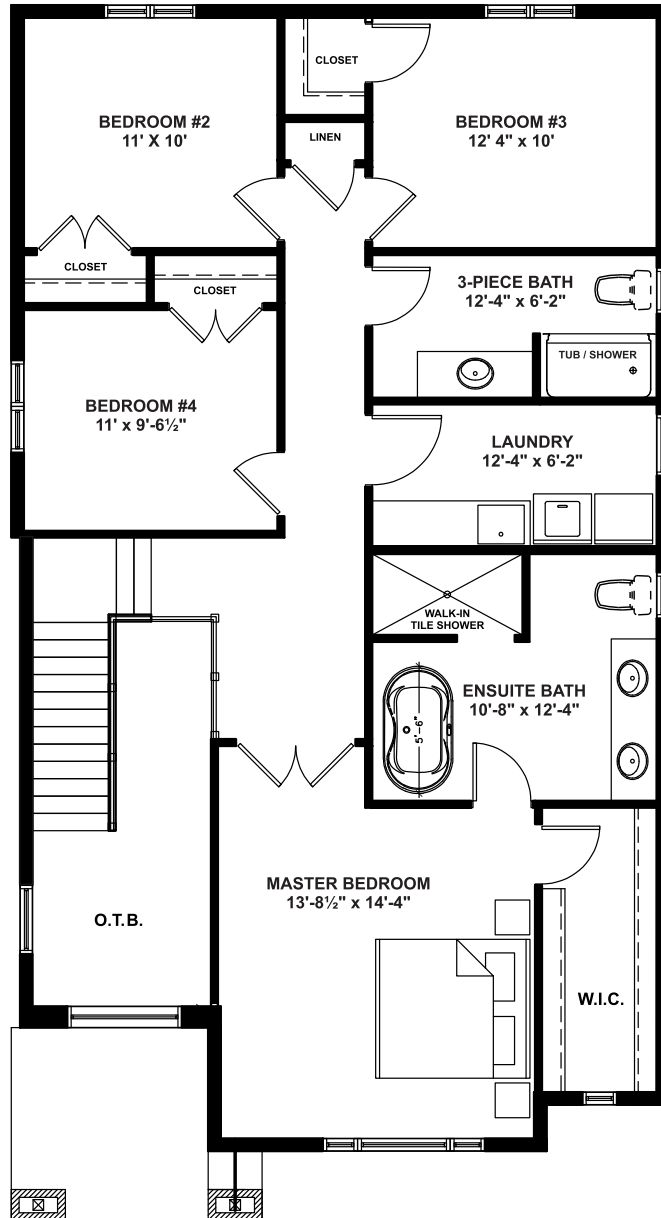
Elevations are artist renderings and may show optional items.

**MAIN FLOOR
LAYOUT**
972 SQ. FT.

30'-5" Wide x 52-6" Deep



**UPPER FLOOR
LAYOUT**
1177 SQ. FT.

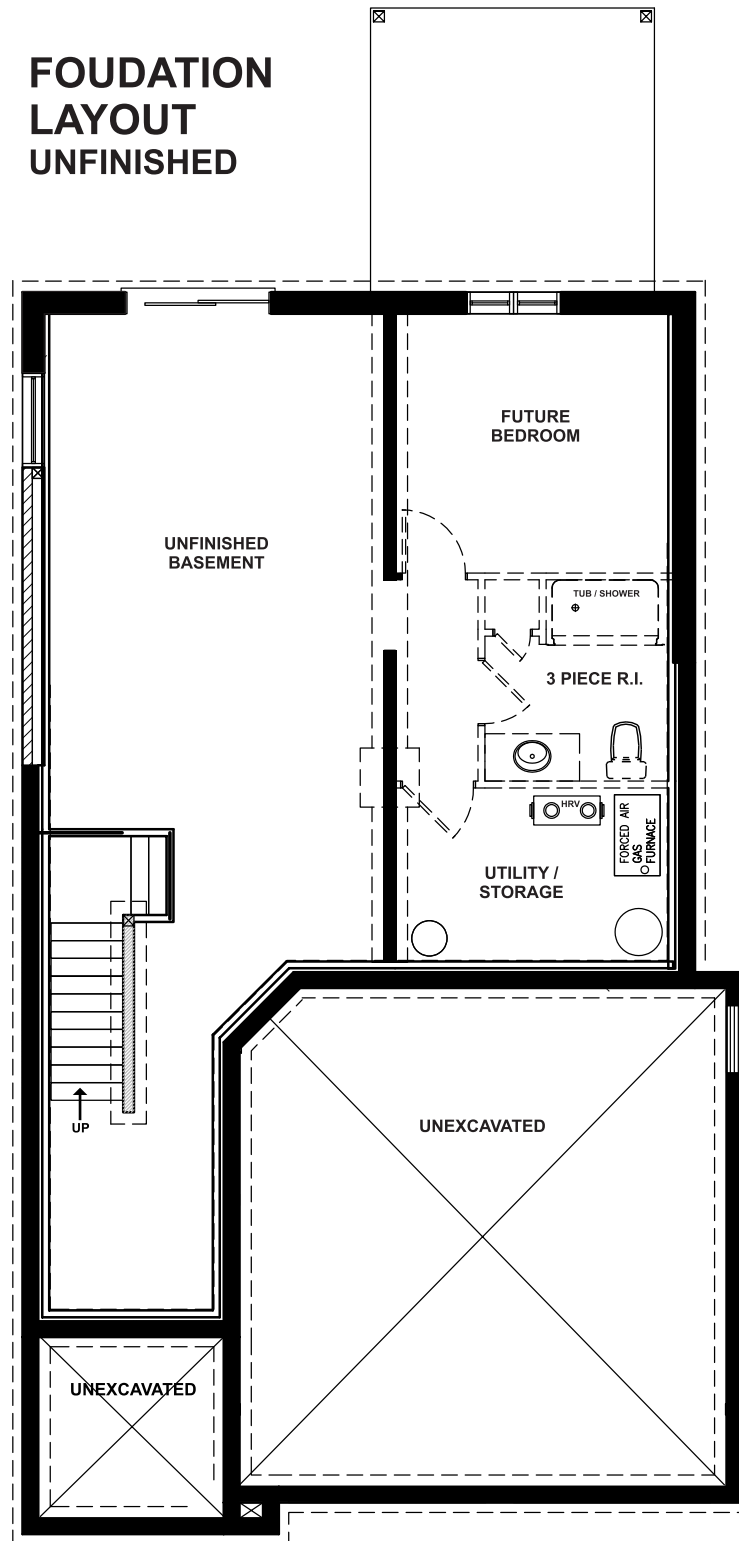


**Collier
Homes**

*Quality Homes
At Affordable Prices*

*Floor plans are artists renderings
and may show optional items.*

**FOUDATION
LAYOUT
UNFINISHED**



**Collier
Homes**

*Quality Homes
At Affordable Prices*

*Floor plans are artists renderings
and may show optional items.*