



QUICK  
POSSESSION  
SPEC  
HOME



*Quality Homes  
At Affordable Prices*

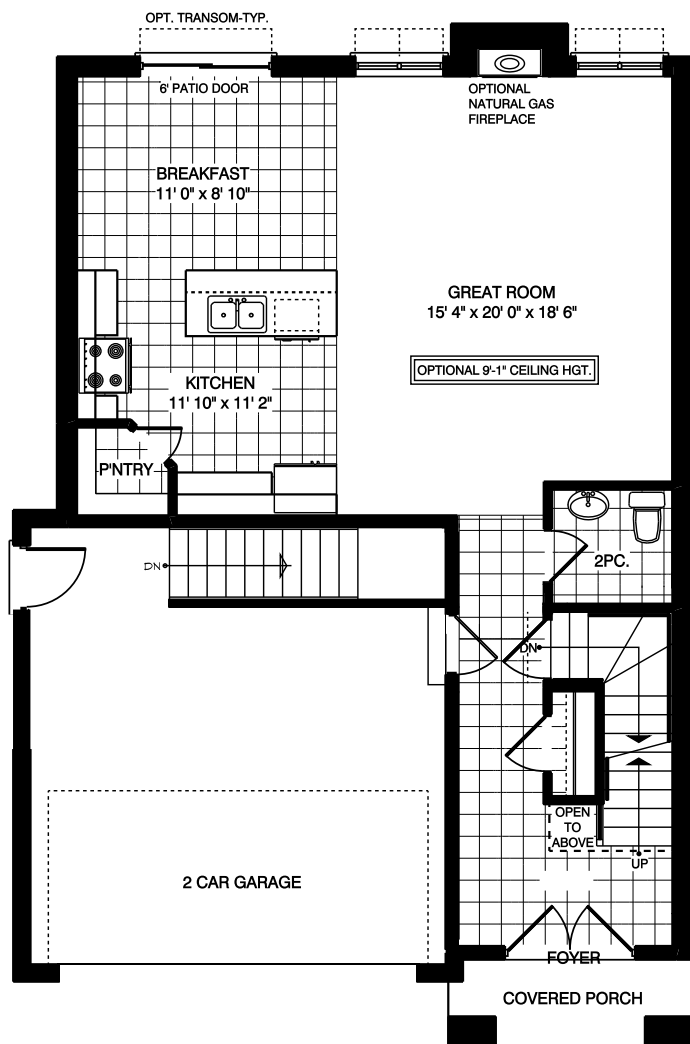
# THE MARYSTOWN

## ELEVATION B

Approximately 2060 sq. ft. two storey with a two car garage. First floor has a two-piece washroom, open concept kitchen, dining and great room. Second Floor features a laundry room, 4 bedrooms and 2 baths.

(519) 633-9642

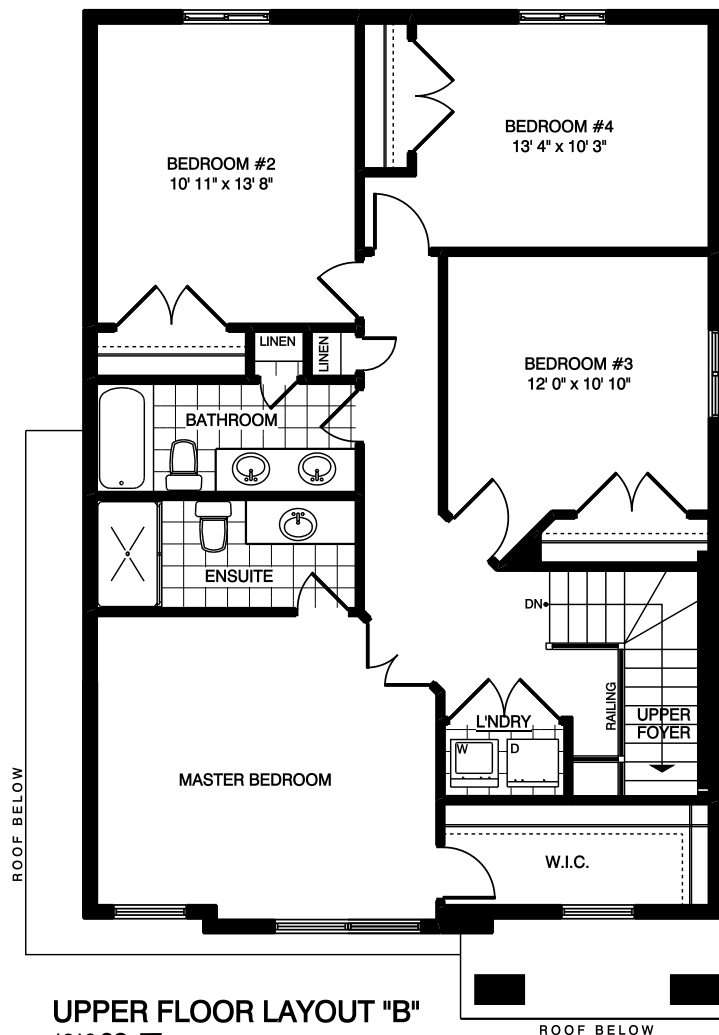
Elevations are artist renderings and may show optional items.



**MAIN FLOOR LAYOUT "B"**

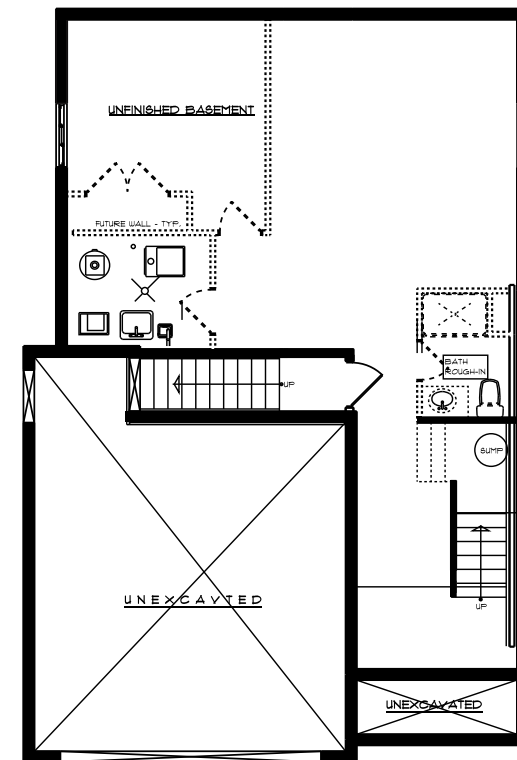
844 SQ. FT.

30'-11" Wide x 46-3" Deep



**UPPER FLOOR LAYOUT "B"**

1216 SQ. FT.



**FOUNDATION LAYOUT**  
(UNFINISHED)

**Collier  
Homes**  
INC.

*Quality Homes  
At Affordable Prices*

Floor plans are artists renderings  
and may show optional items.