



*Quality Homes
At Affordable Prices*

THE MARYSTOWN

ELEVATION A

Approximately 2062 sq. ft. two storey with a two car garage. First floor has a two-piece washroom, open concept kitchen, dining and great room. Second Floor features a laundry room, 4 bedrooms and 2 baths.

(519) 633-9642

Elevations are artist renderings and may show optional items.



*Quality Homes
At Affordable Prices*

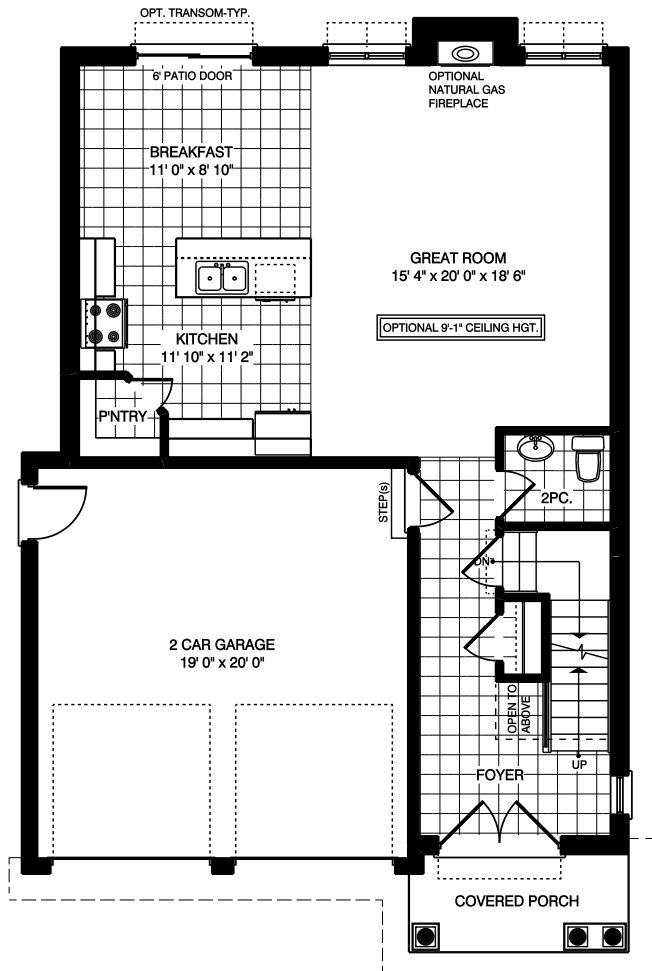
THE MARYSTOWN

ELEVATION B

Approximately 2060 sq. ft. two storey with a two car garage. First floor has a two-piece washroom, open concept kitchen, dining and great room. Second Floor features a laundry room, 4 bedrooms and 2 baths.

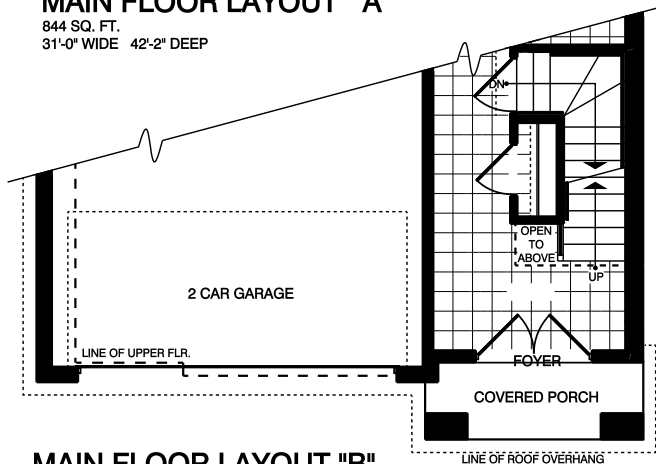
(519) 633-9642

Elevations are artist renderings and may show optional items.



MAIN FLOOR LAYOUT "A"

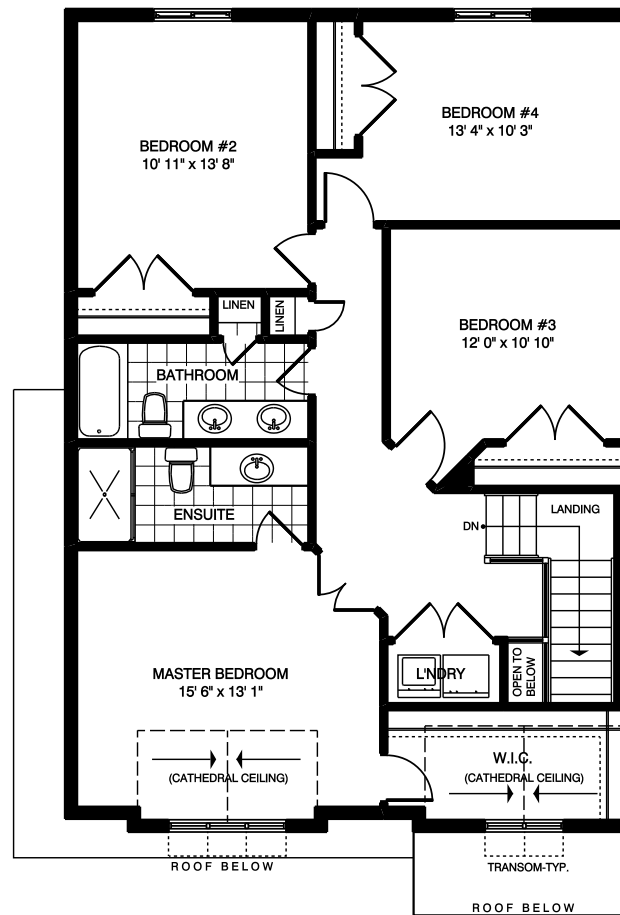
844 SQ. FT.
31'-0" WIDE 42'-2" DEEP



MAIN FLOOR LAYOUT "B"

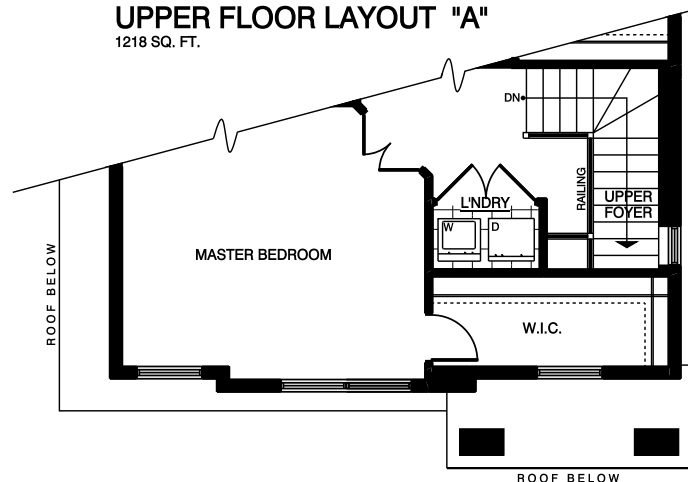
844 SQ. FT.

30'-11" Wide x 46'-3" Deep



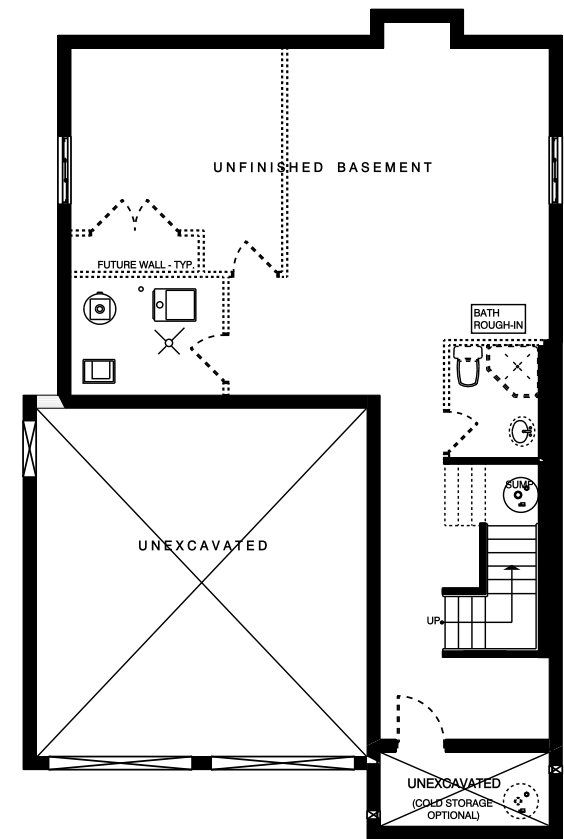
UPPER FLOOR LAYOUT "A"

1218 SQ. FT.



UPPER FLOOR LAYOUT "B"

1216 SQ. FT.



FOUNDATION LAYOUT (UNFINISHED)

**Collier
Homes**
INC.

*Quality Homes
At Affordable Prices*

Floor plans are artists renderings
and may show optional items.