



CONDO
PLAN



**Collier
Homes**

*Quality Homes
At Affordable Prices*

519-633-9642
www.collierhomes.ca

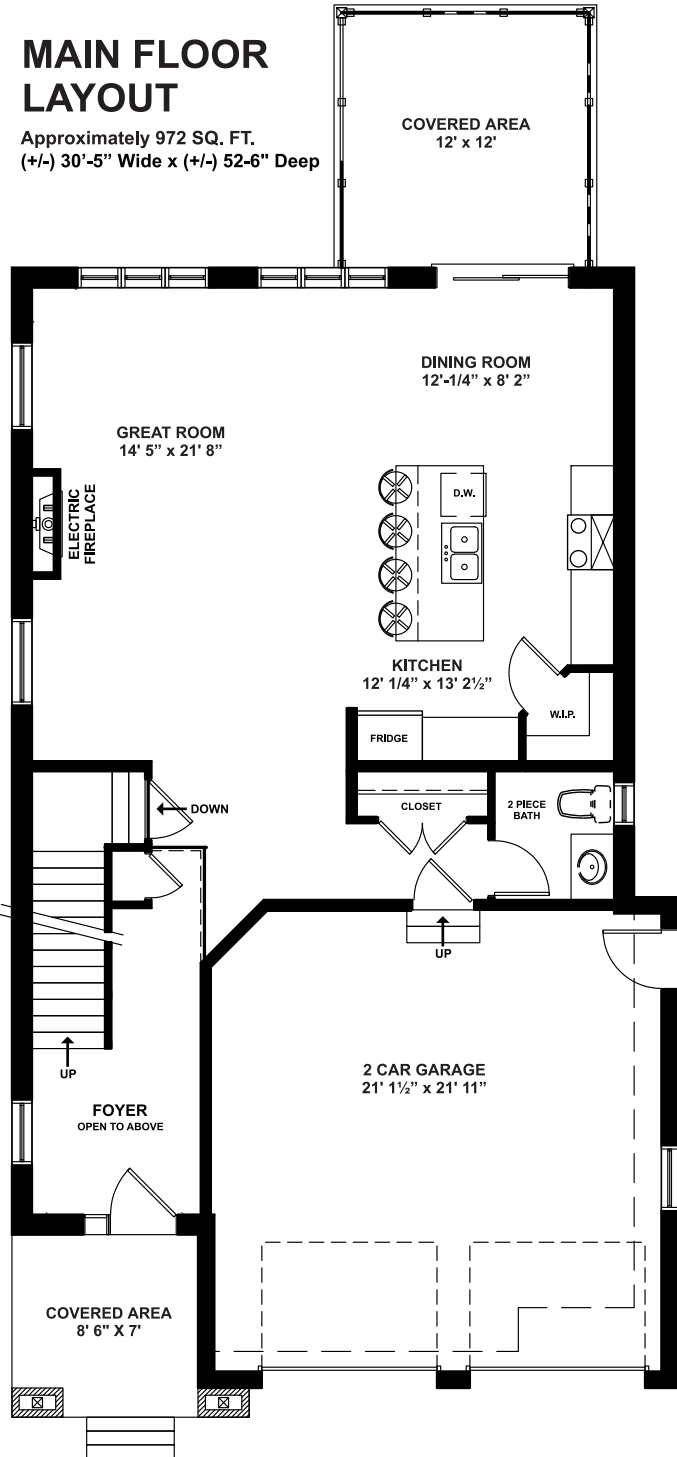
THE BANNERMAN

Approximately 2149 sq ft, this two story home contains 4 bedrooms upstairs including a spacious master bedroom with ensuite and W.I.C. 9' ceiling height, open concept main floor with kitchen, dining room and a two car garage. Electric fireplace. Custom showers.

Elevations are artist renderings and may show optional items.

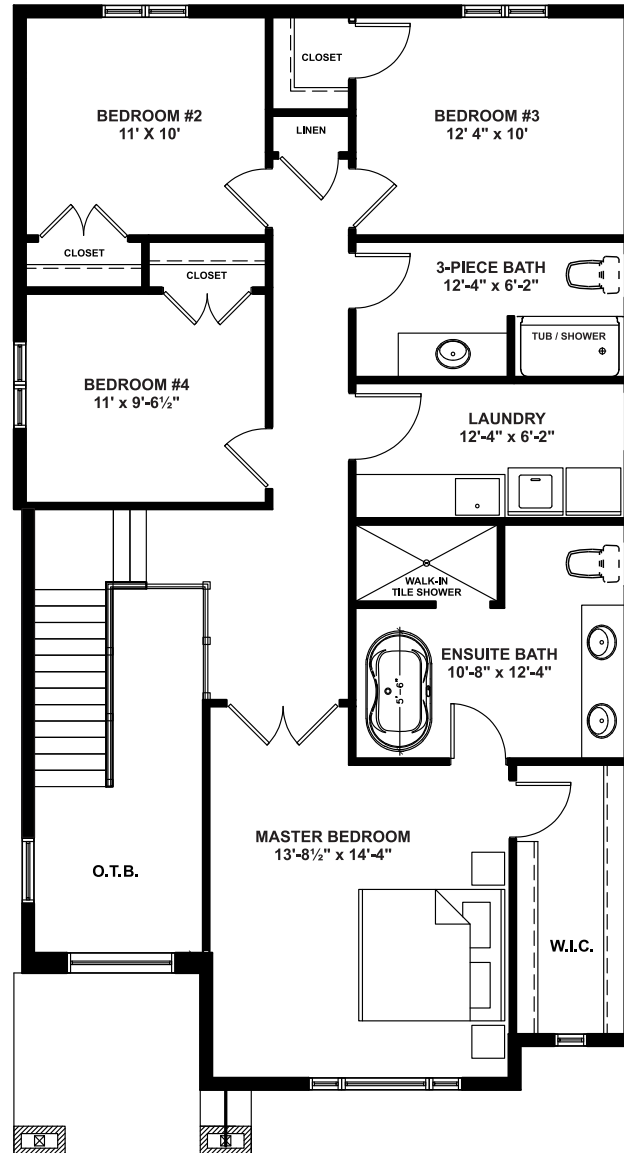
MAIN FLOOR LAYOUT

Approximately 972 SQ. FT.
 (+/-) 30'-5" Wide x (+/-) 52'-6" Deep



UPPER FLOOR LAYOUT

Approximately 1177 SQ. FT.

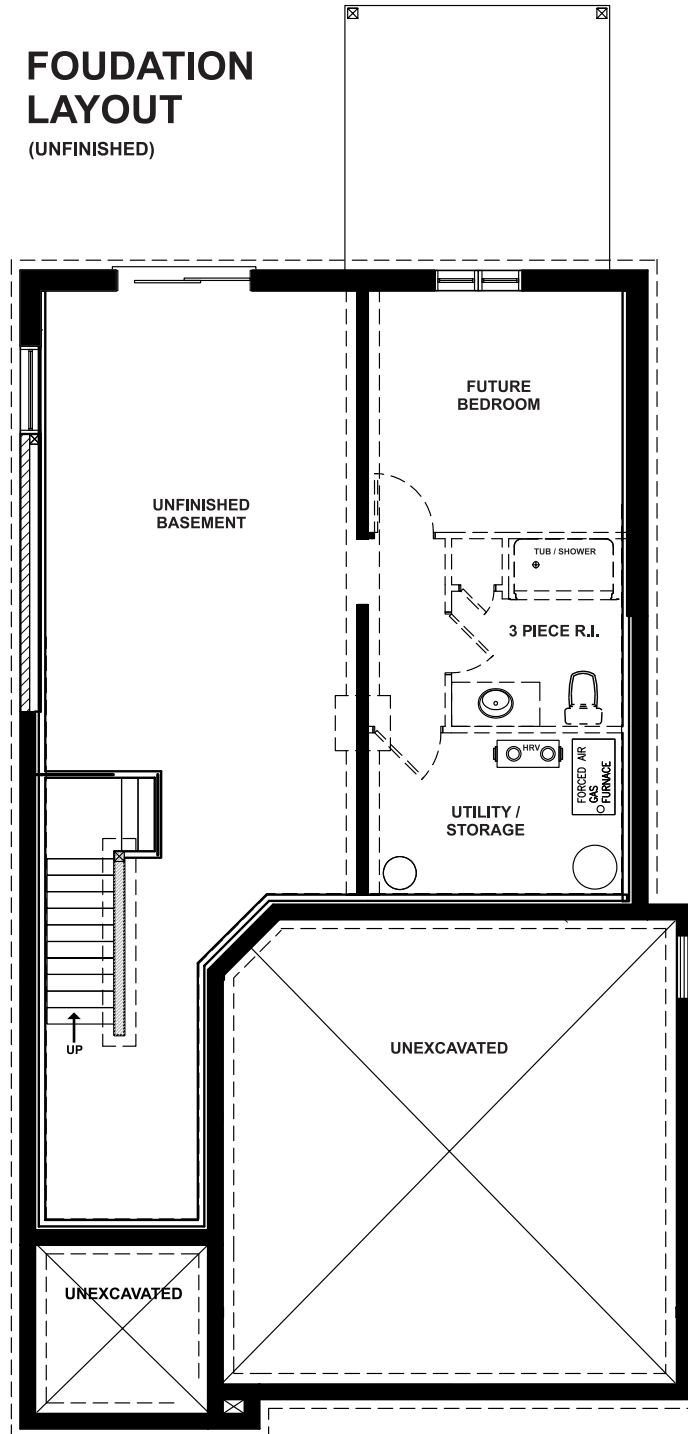


**Collier
Homes**

*Quality Homes
At Affordable Prices*

*Floor plans are artists renderings
and may show optional items.*

**FOUDATION
LAYOUT**
(UNFINISHED)



**Collier
Homes**

*Quality Homes
At Affordable Prices*

*Floor plans are artists renderings
and may show optional items.*