



**Collier
Homes**

*Quality Homes
At Affordable Prices*

519-633-9642

www.collierhomes.ca

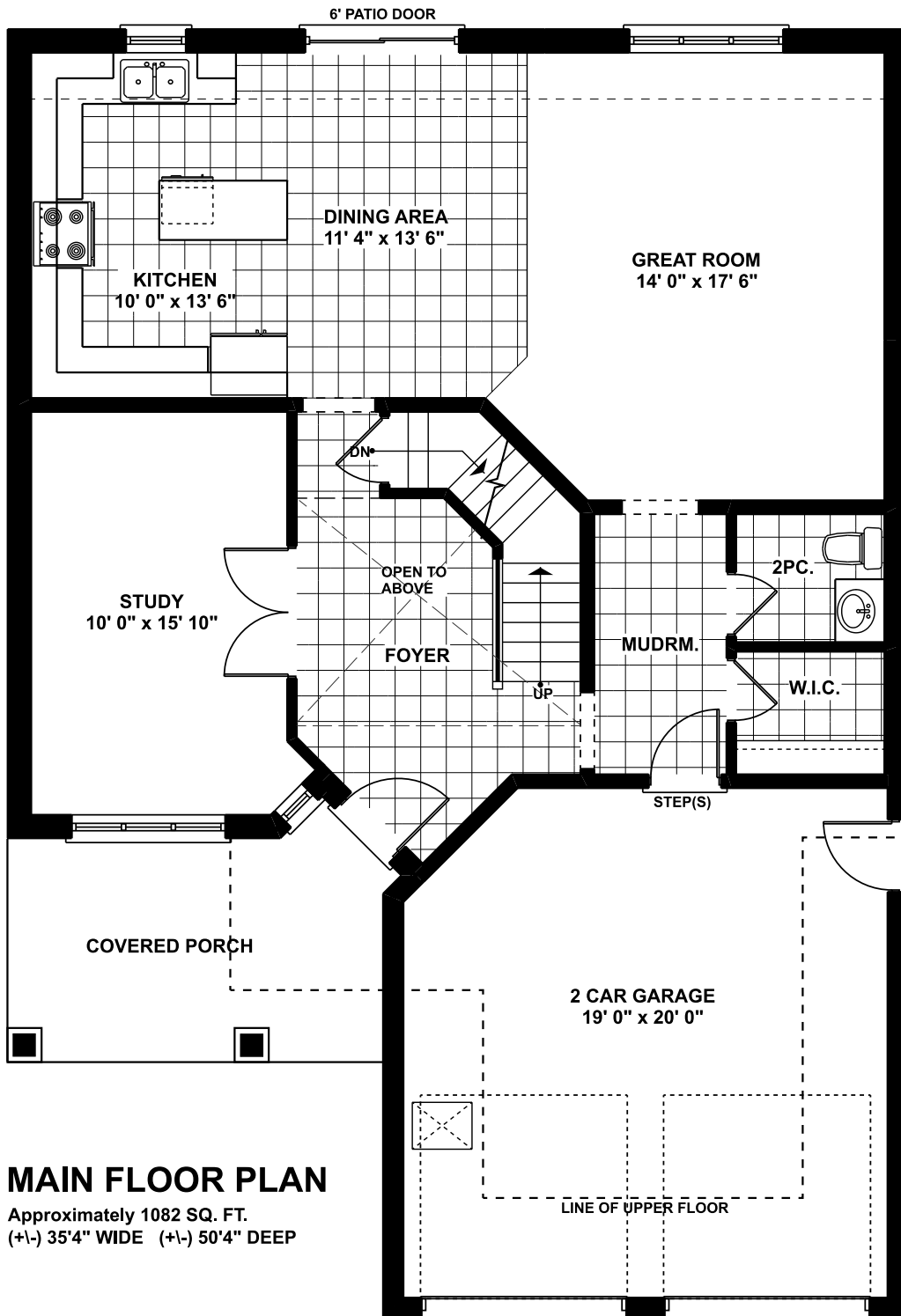
THE HERON

Approximately 2300 sq. ft. 2 storey with 2 car garage.

1st Floor has a spacious foyer, 2 piece washroom, dining room/study, and an open kitchen/dinette leading into the great room.

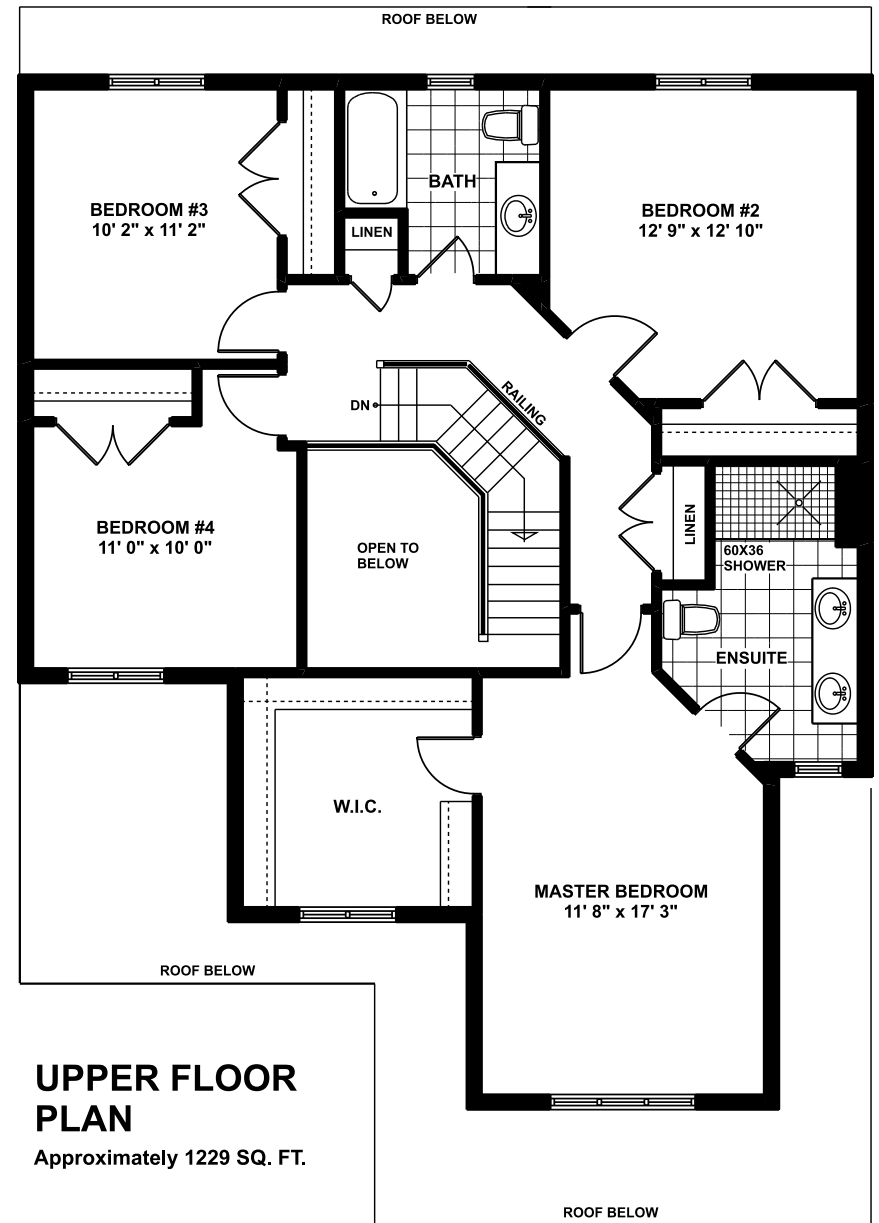
From the open staircase leading to the 2nd floor, it has 4 bedrooms and a 4 piece washroom. Master bedroom has a walk-in closet and a 4 piece ensuite.

Elevations are artist renderings and may show optional items.



MAIN FLOOR PLAN

Approximately 1082 SQ. FT.
 (+/-) 35'4" WIDE (+/-) 50'4" DEEP



UPPER FLOOR PLAN

Approximately 1229 SQ. FT.

**Collier
Homes**
 Quality Homes
 At Affordable Prices

*Floor plans are artists renderings
 and may show optional items.*