



**Collier
Homes**

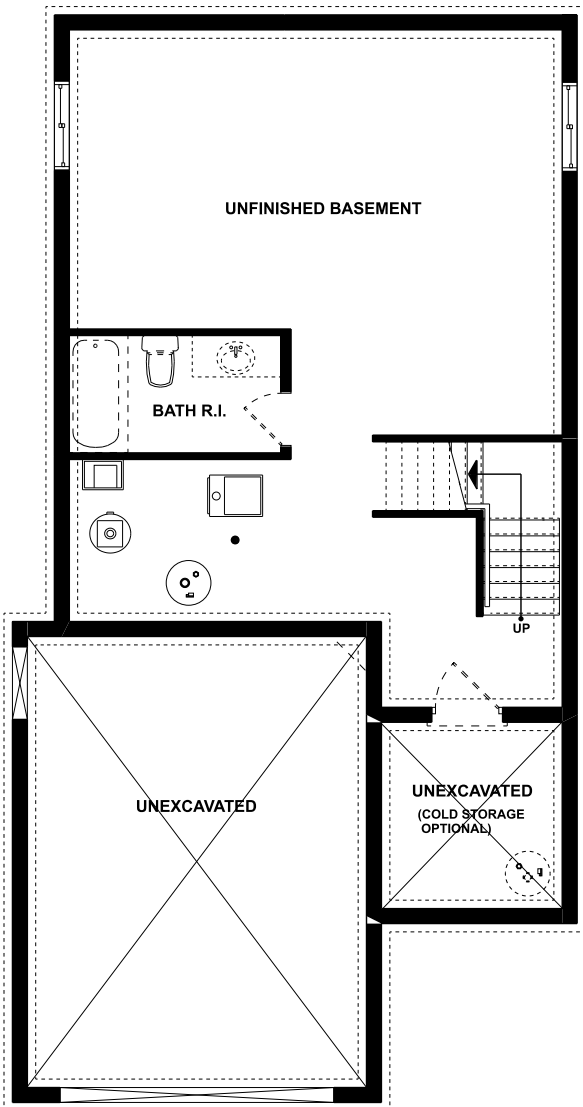
*Quality Homes
At Affordable Prices*

519-633-9642
www.collierhomes.ca

THE RIDGEWAY

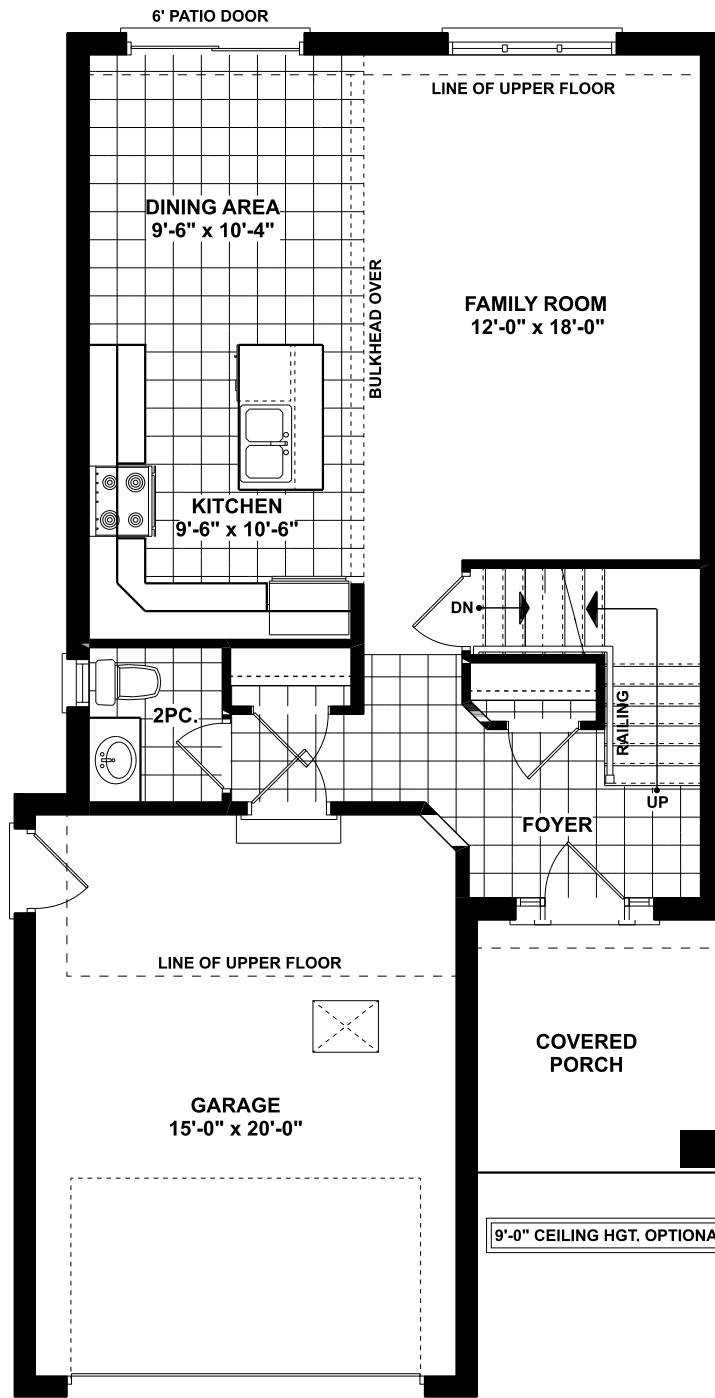
Approximately 1440 sq. ft. 2 storey with garage. 1st Floor has a 2 piece washroom with an open kitchen/dinette and family room. 2nd Floor has laundry room, 4 piece washroom and 3 bedrooms.

Elevations are artist renderings and may show optional items.



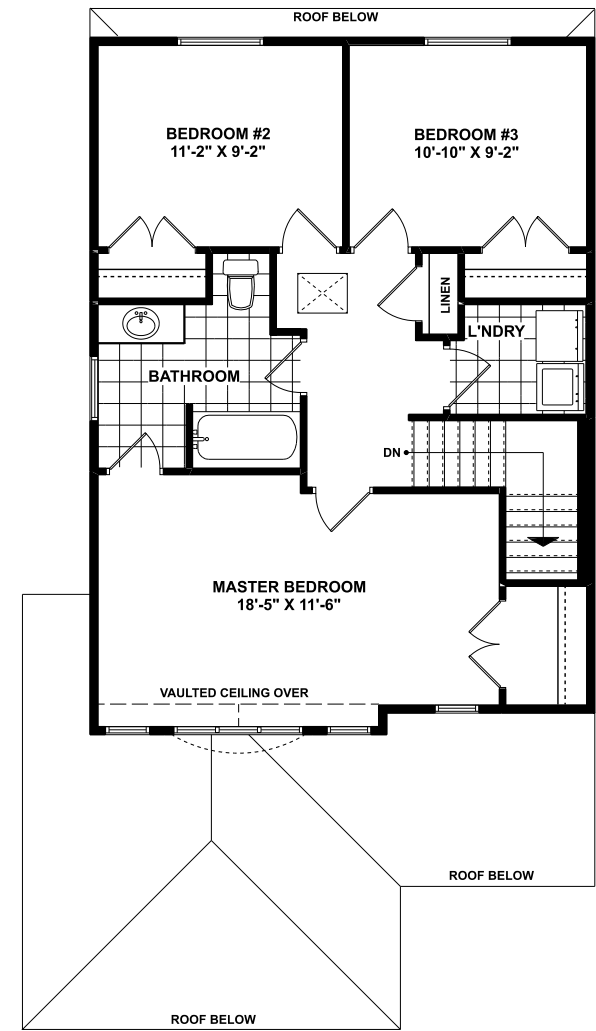
FOUNDATION PLAN

UNFINISHED



MAIN FLOOR PLAN

Approximately 688 SQ. FT.
 (+/-) 25' 3" WIDE (+/-) 48' 7" DEEP



UPPER FLOOR PLAN

Approximately 748 SQ. FT.

**Collier
Homes**

*Quality Homes
At Affordable Prices*

Floor plans are artists renderings and may show optional items.