



**Collier
Homes**
INC.

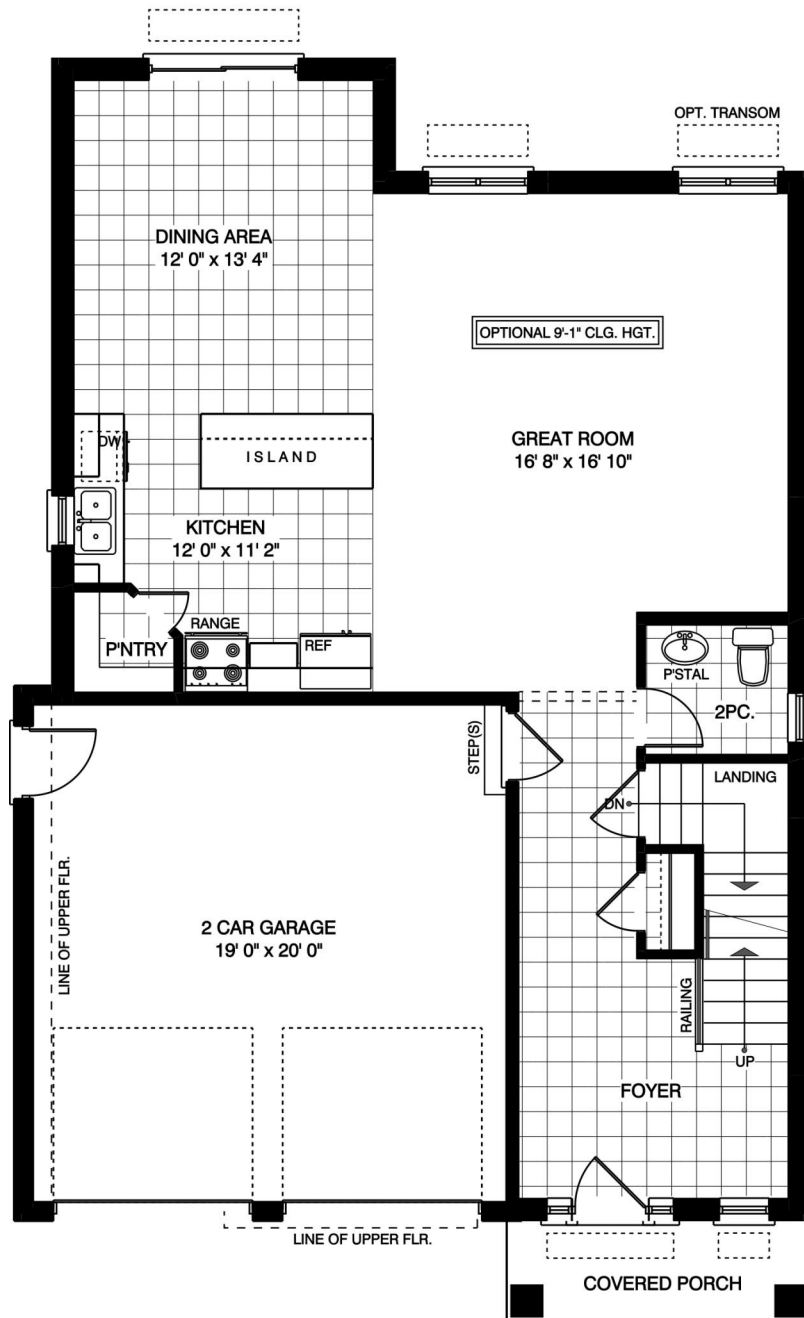
*Quality Homes
at Affordable Prices*

519-633-9642
www.collierhomes.ca

THE AVONDALE II

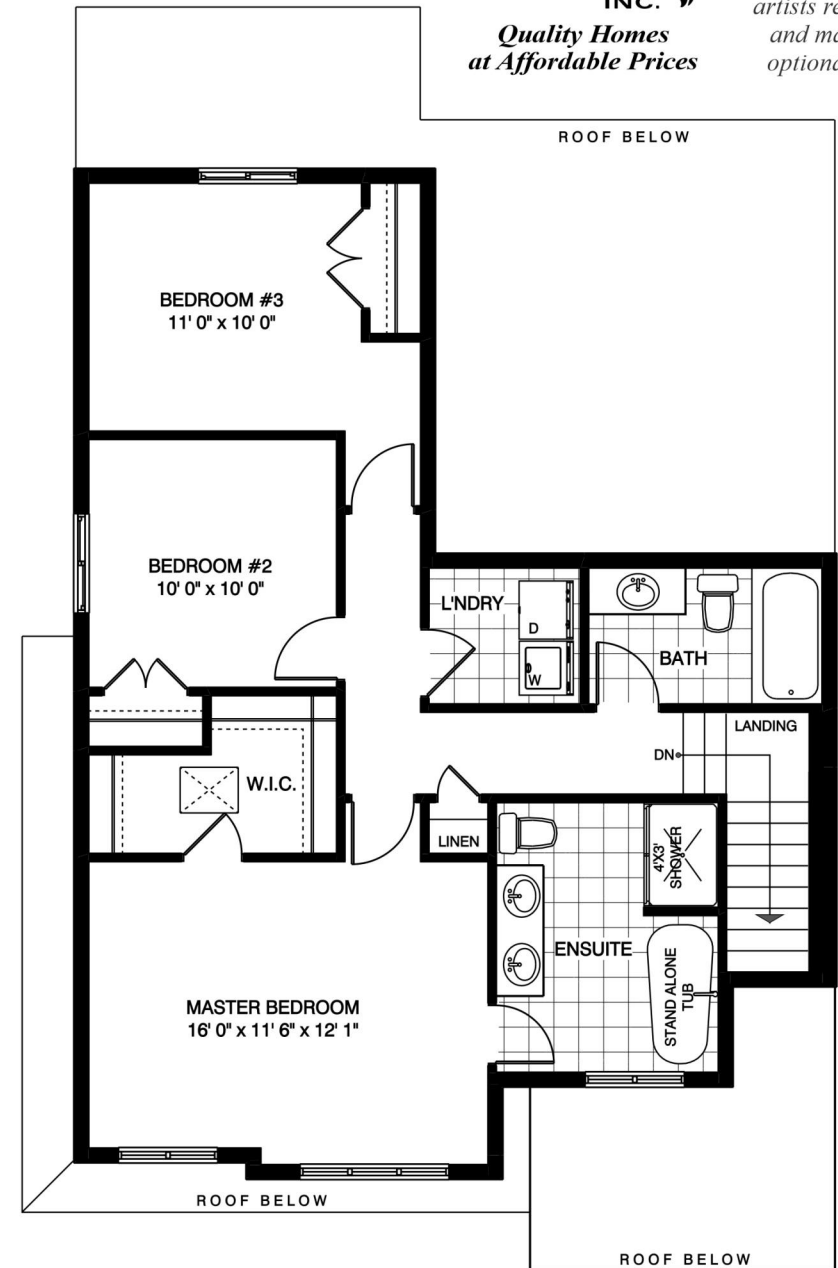
This two-story house spans approximately 1834 sq ft and features an open concept main floor, perfect for entertaining. Upstairs, the master bedroom stands out with its ensuite bathroom and walk-in closet, while two additional bedrooms provide comfortable living spaces. Complete with a 2-car garage, this home offers the ideal combination of style and functionality.

Elevations are artist renderings and may show optional items.



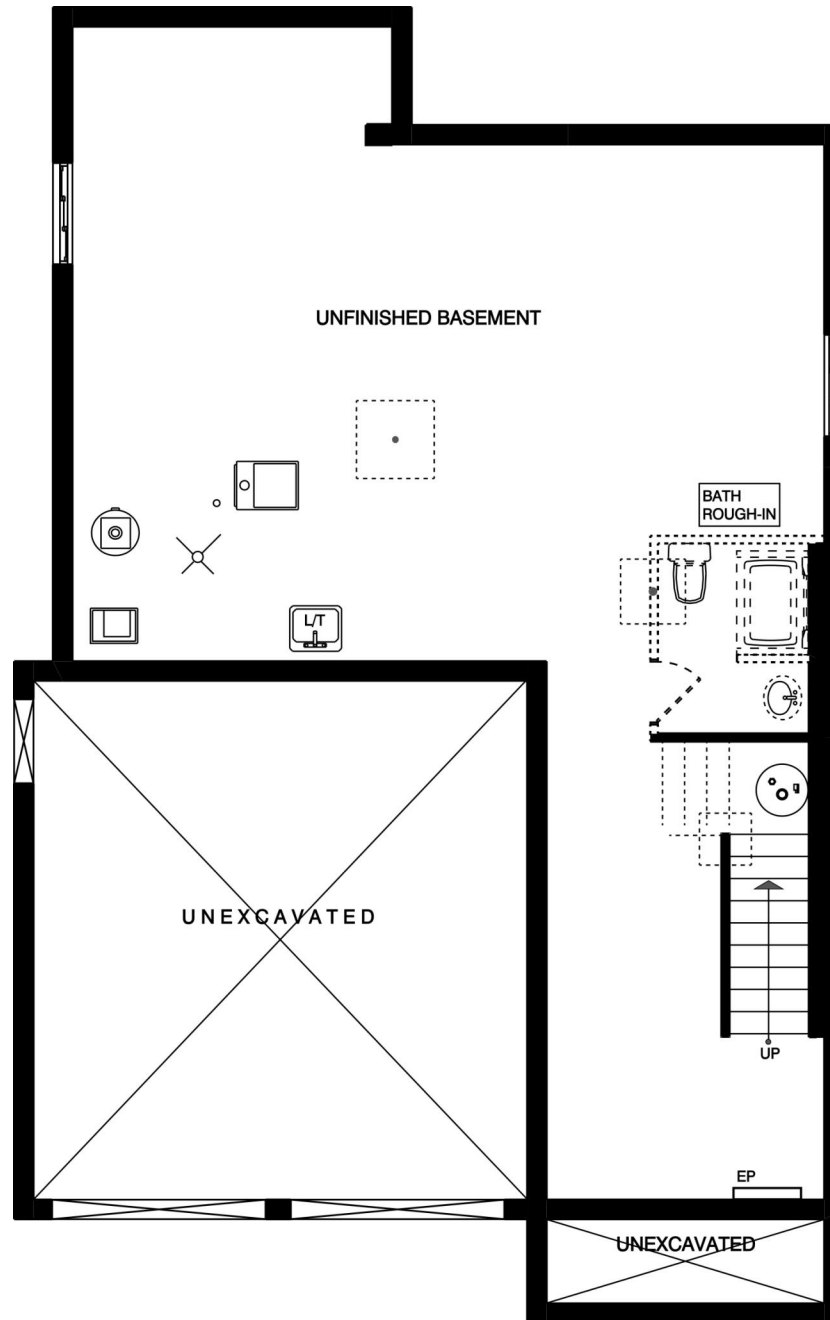
MAIN FLOOR LAYOUT - AVONDALE II OPT. B

Approximately 960 SQ. FT.
(+/-) 32' 0" WIDE (+/-) 50' 8" DEEP



UPPER FLOOR LAYOUT - AVONDALE II OPT. B

Approximately 925 SQ. FT.



**FOUNDATION LAYOUT - AVONDALE II OPT. B
(unfinished)**



*Quality Homes
at Affordable Prices*

*Floor plans are artists renderings
and may show optional items.*