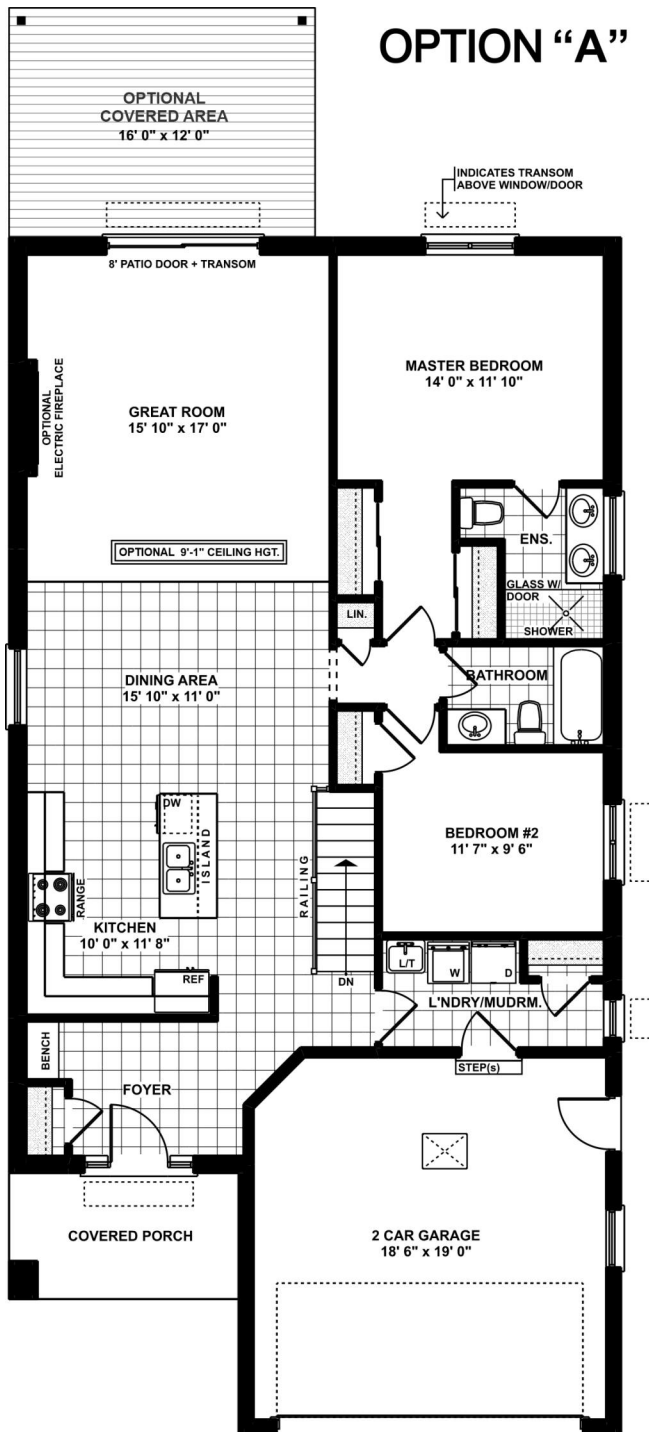




THE SEABREEZE

A generous 1453-square-foot (approx.) bungalow featuring a two-car garage. The open-concept living space, kitchen, and dinette are bathed in natural light through transom windows, creating an inviting ambiance. The main floor includes two bedrooms, laundry facilities, a four-piece main bathroom, and a three-piece ensuite, ensuring comfort and convenience. Optional covered deck, fireplace, and 9' ceiling.

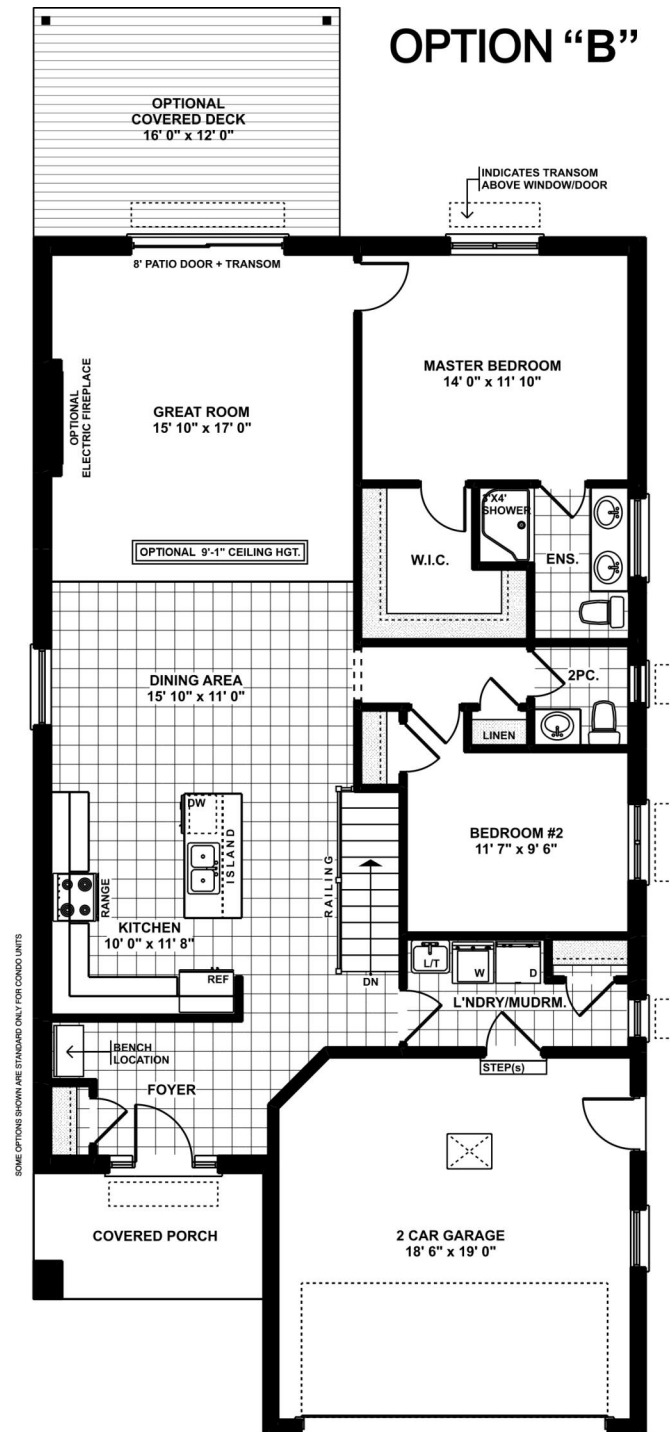
Elevations are artist renderings and may show optional items.



MAIN FLOOR PLAN "A"

Approximately 1453 SQ. FT.

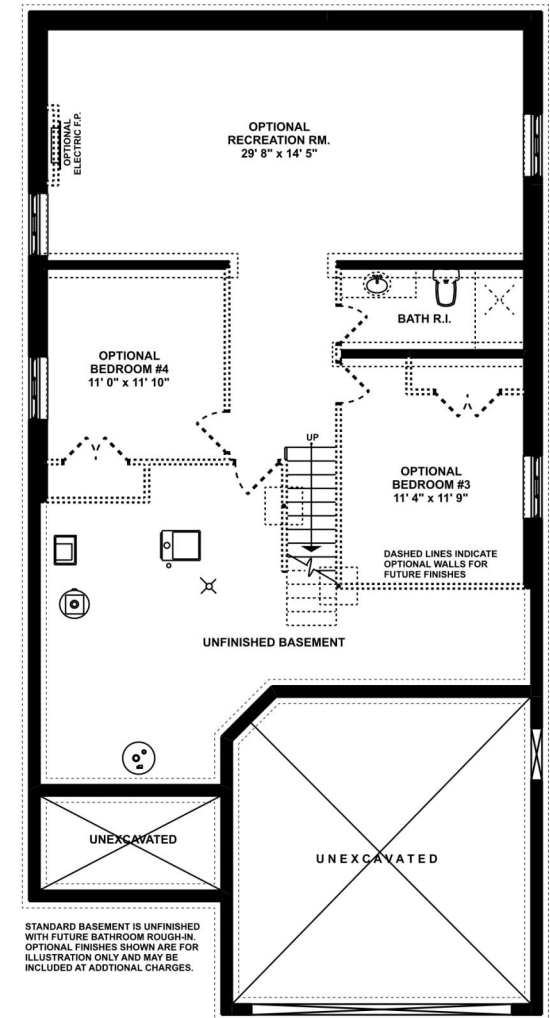
(+/-) 32' 0" WIDE (+/-) 62' 7" DEEP



MAIN FLOOR PLAN "B"

Approximately 1453 SQ. FT.

(+/-) 32' 0" WIDE (+/-) 62' 7" DEEP



FOUNDATION PLAN

Approximately 942 SQ. FT.
OPTIONAL FINISHED

**Collier
Homes**
INC.

*Quality Homes
at Affordable Prices*

*Floor plans are artists renderings
and may show optional items.*